

Anti-Atg4C Rabbit Monoclonal Antibody
Catalog # ABO13811

Specification

Anti-Atg4C Rabbit Monoclonal Antibody - Product Information

Application	WB, IHC, FC
Primary Accession	Q96DT6
Host	Rabbit
Isotype	Rabbit IgG
Reactivity	Human
Clonality	Monoclonal
Format	Liquid

Description

Anti-Atg4C Rabbit Monoclonal Antibody . Tested in WB, IHC, Flow Cytometry applications. This antibody reacts with Human.

Anti-Atg4C Rabbit Monoclonal Antibody - Additional Information

Gene ID 84938

Other Names

Cysteine protease ATG4C, 3.4.22.-, AUT-like 3 cysteine endopeptidase, Autophagy-related cysteine endopeptidase 3, Autophagin-3, Autophagy-related protein 4 homolog C, HsAPG4C, ATG4C {ECO:0000303|PubMed:21177865, ECO:0000312|HGNC:HGNC:16040}

Calculated MW

52497 MW KDa

Application Details

WB 1:1000-1:5000
IHC 1:50-1:200
FC 1:50

Subcellular Localization

Cytoplasm.

Tissue Specificity

Highly expressed in skeletal muscle, heart, liver and testis..

Contents

Rabbit IgG in phosphate buffered saline, pH 7.4, 150mM NaCl, 0.02% sodium azide and 50% glycerol, 0.4-0.5mg/ml BSA.

Immunogen

A synthesized peptide derived from human Atg4C

Purification

Affinity-chromatography

Storage

Store at -20°C for one year. For short term storage and frequent use, store at 4°C for

up to one month. Avoid repeated
freeze-thaw cycles.

Anti-Atg4C Rabbit Monoclonal Antibody - Protein Information

Name ATG4C {ECO:0000303|PubMed:21177865, ECO:0000312|HGNC:HGNC:16040}

Function

Cysteine protease that plays a key role in autophagy by mediating both proteolytic activation and delipidation of ATG8 family proteins (PubMed:21177865, PubMed:29458288, PubMed:30661429). The protease activity is required for proteolytic activation of ATG8 family proteins: cleaves the C-terminal amino acid of ATG8 proteins MAP1LC3 and GABARAPL2, to reveal a C-terminal glycine (PubMed:21177865). Exposure of the glycine at the C-terminus is essential for ATG8 proteins conjugation to phosphatidylethanolamine (PE) and insertion to membranes, which is necessary for autophagy (By similarity). In addition to the protease activity, also mediates delipidation of ATG8 family proteins (PubMed:29458288, PubMed:33909989). Catalyzes delipidation of PE-conjugated forms of ATG8 proteins during macroautophagy (PubMed:29458288, PubMed:33909989). Compared to ATG4B, the major protein for proteolytic activation of ATG8 proteins, shows weaker ability to cleave the C-terminal amino acid of ATG8 proteins, while it displays stronger delipidation activity (PubMed:29458288). In contrast to other members of the family, weakly or not involved in phagophore growth during mitophagy (PubMed:33773106).

Cellular Location

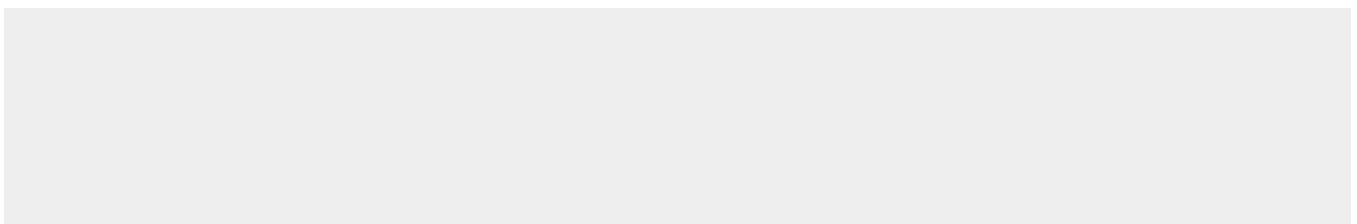
Cytoplasm {ECO:0000250|UniProtKB:Q8BGE6}.

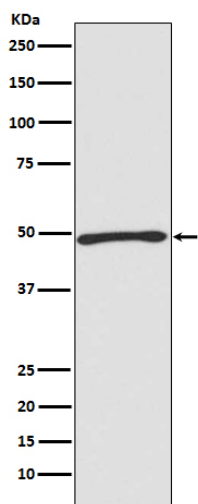
Anti-Atg4C Rabbit Monoclonal Antibody - Protocols

Provided below are standard protocols that you may find useful for product applications.

- [Western Blot](#)
- [Blocking Peptides](#)
- [Dot Blot](#)
- [Immunohistochemistry](#)
- [Immunofluorescence](#)
- [Immunoprecipitation](#)
- [Flow Cytometry](#)
- [Cell Culture](#)

Anti-Atg4C Rabbit Monoclonal Antibody - Images





Western blot analysis of Atg4C expression in Jurkat cell lysate.