

**Anti-CRYAB/Alpha B Crystallin Rabbit Monoclonal Antibody**  
Catalog # ABO13807**Specification****Anti-CRYAB/Alpha B Crystallin Rabbit Monoclonal Antibody - Product Information**

Application	WB, IHC, IF, ICC, IP
Primary Accession	<a href="#">P02511</a>
Host	Rabbit
Isotype	Rabbit IgG
Reactivity	Rat, Human
Clonality	Monoclonal
Format	Liquid

**Description**

Anti-CRYAB/Alpha B Crystallin Rabbit Monoclonal Antibody . Tested in WB, IHC, ICC/IF, IP applications. This antibody reacts with Human, Rat.

**Anti-CRYAB/Alpha B Crystallin Rabbit Monoclonal Antibody - Additional Information**

**Gene ID** 1410

**Other Names**

Alpha-crystallin B chain, Alpha(B)-crystallin, Heat shock protein beta-5, HspB5, Heat shock protein family B member 5, Renal carcinoma antigen NY-REN-27, Rosenthal fiber component, CRYAB ([HGNC:2389](http://www.genenames.org/cgi-bin/gene_symbol_report?hgnc_id=2389)), CRYA2, HSPB5

**Calculated MW**

20159 MW KDa

**Application Details**

WB 1:500-1:2000<br>IHC 1:50-1:200<br>ICC/IF 1:50-1:200<br>IP 1:80

**Subcellular Localization**

Cytoplasm. Nucleus. Translocates to the nucleus during heat shock and resides in sub-nuclear structures known as SC35 speckles or nuclear splicing speckles.

**Tissue Specificity**

Lens as well as other tissues.

**Contents**

Rabbit IgG in phosphate buffered saline, pH 7.4, 150mM NaCl, 0.02% sodium azide and 50% glycerol, 0.4-0.5mg/ml BSA.

**Immunogen**

A synthesized peptide derived from human CRYAB

**Purification**

Affinity-chromatography

## Storage

**Store at -20°C for one year. For short term storage and frequent use, store at 4°C for up to one month. Avoid repeated freeze-thaw cycles.**

## Anti-CRYAB/Alpha B Crystallin Rabbit Monoclonal Antibody - Protein Information

**Name** CRYAB ([HGNC:2389](#))

**Synonyms** CRYA2, HSPB5

### Function

May contribute to the transparency and refractive index of the lens. Has chaperone-like activity, preventing aggregation of various proteins under a wide range of stress conditions. In lens epithelial cells, stabilizes the ATP6V1A protein, preventing its degradation by the proteasome (By similarity).

### Cellular Location

Cytoplasm. Nucleus Secreted. Lysosome {ECO:0000250|UniProtKB:P23927}. Note=Translocates to the nucleus during heat shock and resides in sub-nuclear structures known as SC35 speckles or nuclear splicing speckles (PubMed:19464326). Localizes at the Z- bands and the intercalated disk in cardiomyocytes (PubMed:28493373) Can be secreted; the secretion is dependent on protein unfolding and facilitated by the cargo receptor TMED10; it results in protein translocation from the cytoplasm into the ERGIC (endoplasmic reticulum- Golgi intermediate compartment) followed by vesicle entry and secretion (PubMed:32272059).

### Tissue Location

Lens as well as other tissues (PubMed:2387586, PubMed:838078). Expressed in myocardial tissue (PubMed:28493373)

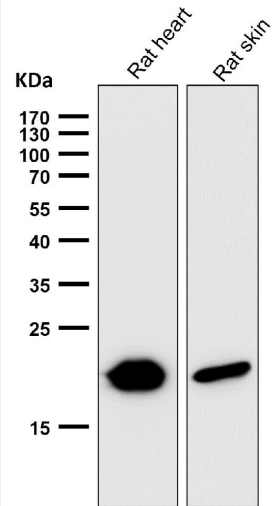
## Anti-CRYAB/Alpha B Crystallin Rabbit Monoclonal Antibody - Protocols

Provided below are standard protocols that you may find useful for product applications.

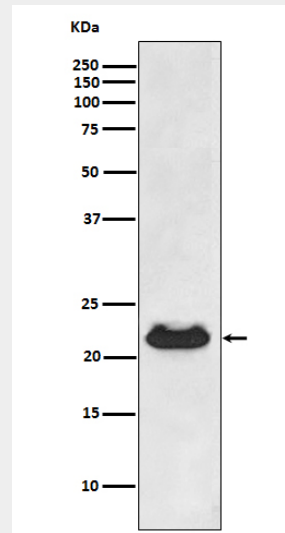
- [Western Blot](#)
- [Blocking Peptides](#)
- [Dot Blot](#)
- [Immunohistochemistry](#)
- [Immunofluorescence](#)
- [Immunoprecipitation](#)
- [Flow Cytometry](#)
- [Cell Culture](#)

## Anti-CRYAB/Alpha B Crystallin Rabbit Monoclonal Antibody - Images





All lanes use the Antibody at 1:5K dilution for 1 hour at room temperature.



Western blot analysis of CRYAB expression in human fetal heart lysate.