

Anti-GCET1 SERPINA9 Rabbit Monoclonal Antibody
Catalog # ABO13794

Specification

Anti-GCET1 SERPINA9 Rabbit Monoclonal Antibody - Product Information

Application	WB
Primary Accession	Q86WD7
Host	Rabbit
Isotype	Rabbit IgG
Reactivity	Rat, Human, Mouse
Clonality	Monoclonal
Format	Liquid

Description

Anti-GCET1 SERPINA9 Rabbit Monoclonal Antibody . Tested in WB application. This antibody reacts with Human, Mouse, Rat.

Anti-GCET1 SERPINA9 Rabbit Monoclonal Antibody - Additional Information

Gene ID 327657

Other Names

Serpin A9, Centerin, Germinal center B-cell-expressed transcript 1 protein, SERPINA9, GCET1, SERPINA11

Calculated MW

46557 MW KDa

Application Details

WB 1:500-1:2000

Subcellular Localization

Isoform 1: Secreted.

Tissue Specificity

Highly expressed in normal germinal center (GC) B-cells and GC B-cell-derived malignancies..

Contents

Rabbit IgG in phosphate buffered saline, pH 7.4, 150mM NaCl, 0.02% sodium azide and 50% glycerol, 0.4-0.5mg/ml BSA.

Immunogen

A synthesized peptide derived from human GCET1

Purification

Affinity-chromatography

Storage

Store at -20°C for one year. For short term storage and frequent use, store at 4°C for up to one month. Avoid repeated

freeze-thaw cycles.

Anti-GCET1 SERPINA9 Rabbit Monoclonal Antibody - Protein Information

Name SERPINA9

Synonyms GCET1, SERPINA11

Function

Protease inhibitor that inhibits trypsin and trypsin-like serine proteases (in vitro). Inhibits plasmin and thrombin with lower efficiency (in vitro).

Cellular Location

[Isoform 1]: Secreted. [Isoform 3]: Cytoplasm. [Isoform 5]: Cytoplasm. [Isoform 7]: Membrane; Single-pass type II membrane protein

Tissue Location

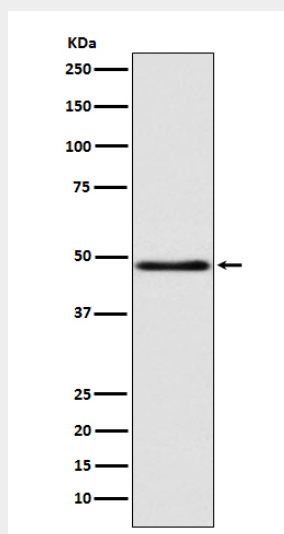
Highly expressed in normal germinal center (GC) B- cells and GC B-cell-derived malignancies.

Anti-GCET1 SERPINA9 Rabbit Monoclonal Antibody - Protocols

Provided below are standard protocols that you may find useful for product applications.

- [Western Blot](#)
- [Blocking Peptides](#)
- [Dot Blot](#)
- [Immunohistochemistry](#)
- [Immunofluorescence](#)
- [Immunoprecipitation](#)
- [Flow Cytometry](#)
- [Cell Culture](#)

Anti-GCET1 SERPINA9 Rabbit Monoclonal Antibody - Images



Western blot analysis of GCET1 expression in MCF7 cell lysate.