

Anti-PROX1 Rabbit Monoclonal Antibody
Catalog # ABO13790

Specification

Anti-PROX1 Rabbit Monoclonal Antibody - Product Information

Application	WB
Primary Accession	Q92786
Host	Rabbit
Isotype	Rabbit IgG
Reactivity	Human
Clonality	Monoclonal
Format	Liquid

Description

Anti-PROX1 Rabbit Monoclonal Antibody . Tested in WB application. This antibody reacts with Human.

Anti-PROX1 Rabbit Monoclonal Antibody - Additional Information

Gene ID 5629

Other Names

Prospero homeobox protein 1, Homeobox prospero-like protein PROX1, PROX-1, PROX1

Calculated MW

83203 MW KDa

Application Details

WB 1:500-1:2000

Subcellular Localization

Nucleus. RORG promotes its nuclear localization..

Tissue Specificity

Most actively expressed in the developing lens. Detected also in embryonic brain, lung, liver and kidney. In adult, it is more abundant in heart and liver than in brain, skeletal muscle, kidney and pancreas..

Contents

Rabbit IgG in phosphate buffered saline, pH 7.4, 150mM NaCl, 0.02% sodium azide and 50% glycerol, 0.4-0.5mg/ml BSA.

Immunogen

A synthesized peptide derived from human PROX1

Purification

Affinity-chromatography

Storage

Store at -20°C for one year. For short term storage and frequent use, store at 4°C for

up to one month. Avoid repeated
freeze-thaw cycles.

Anti-PROX1 Rabbit Monoclonal Antibody - Protein Information

Name PROX1

Function

Transcription factor involved in developmental processes such as cell fate determination, gene transcriptional regulation and progenitor cell regulation in a number of organs. Plays a critical role in embryonic development and functions as a key regulatory protein in neurogenesis and the development of the heart, eye lens, liver, pancreas and the lymphatic system. Involved in the regulation of the circadian rhythm. Represses: transcription of the retinoid-related orphan receptor ROR γ , transcriptional activator activity of RORA and ROR γ and the expression of RORA/G-target genes including core clock components: BMAL1, NPAS2 and CRY1 and metabolic genes: AVPR1A and ELOVL3.

Cellular Location

Nucleus {ECO:0000250|UniProtKB:P48437}. Note=ROR γ promotes its nuclear localization. {ECO:0000250|UniProtKB:P48437}

Tissue Location

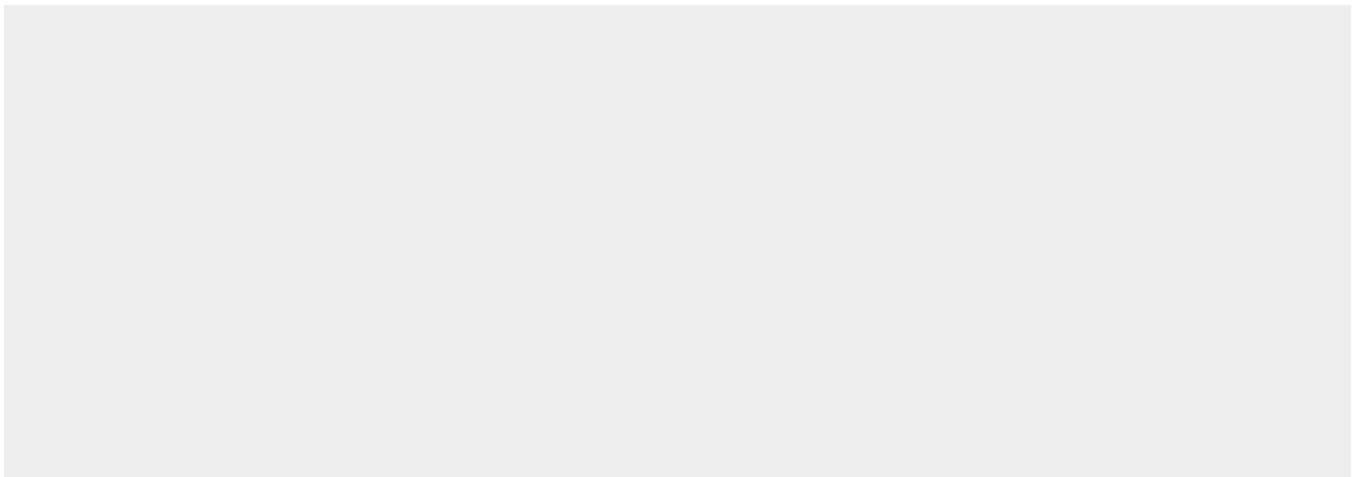
Most actively expressed in the developing lens. Detected also in embryonic brain, lung, liver and kidney. In adult, it is more abundant in heart and liver than in brain, skeletal muscle, kidney and pancreas.

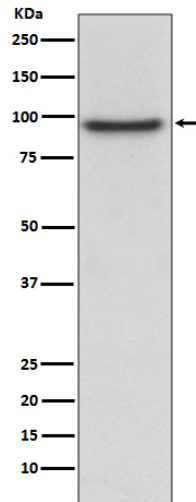
Anti-PROX1 Rabbit Monoclonal Antibody - Protocols

Provided below are standard protocols that you may find useful for product applications.

- [Western Blot](#)
- [Blocking Peptides](#)
- [Dot Blot](#)
- [Immunohistochemistry](#)
- [Immunofluorescence](#)
- [Immunoprecipitation](#)
- [Flow Cytometry](#)
- [Cell Culture](#)

Anti-PROX1 Rabbit Monoclonal Antibody - Images





Western blot analysis of PROX1 expression in HepG2 cell lysate.