

Anti-XRCC1 Rabbit Monoclonal Antibody Catalog # ABO13783

Specification

Anti-XRCC1 Rabbit Monoclonal Antibody - Product Information

| | |
|-------------------|------------------------|
| Application | WB, IHC, IF, ICC |
| Primary Accession | P18887 |
| Host | Rabbit |
| Isotype | Rabbit IgG |
| Reactivity | Rat, Human, Mouse |
| Clonality | Monoclonal |
| Format | Liquid |

Description

Anti-XRCC1 Rabbit Monoclonal Antibody . Tested in WB, IHC, ICC/IF applications. This antibody reacts with Human, Mouse, Rat.

Anti-XRCC1 Rabbit Monoclonal Antibody - Additional Information

Gene ID 7515

Other Names

DNA repair protein XRCC1, X-ray repair cross-complementing protein 1, XRCC1
{ECO:0000303|PubMed:2247054, ECO:0000312|HGNC:HGNC:12828}

Calculated MW

69477 MW KDa

Application Details

WB 1:500-1:2000
IHC 1:50-1:200
ICC/IF 1:50-1:200

Subcellular Localization

Nucleus. Accumulates at sites of DNA damage.

Contents

Rabbit IgG in phosphate buffered saline, pH 7.4, 150mM NaCl, 0.02% sodium azide and 50% glycerol, 0.4-0.5mg/ml BSA.

Immunogen

A synthesized peptide derived from human XRCC1

Purification

Affinity-chromatography

Storage

Store at -20°C for one year. For short term storage and frequent use, store at 4°C for up to one month. Avoid repeated freeze-thaw cycles.

Anti-XRCC1 Rabbit Monoclonal Antibody - Protein Information

Name XRCC1 {ECO:0000303|PubMed:2247054, ECO:0000312|HGNC:HGNC:12828}

Function

Scaffold protein involved in DNA single-strand break repair by mediating the assembly of DNA break repair protein complexes (PubMed:11163244, PubMed:28002403). Negatively regulates ADP- ribosyltransferase activity of PARP1 during base-excision repair in order to prevent excessive PARP1 activity (PubMed:28002403, PubMed:34102106, PubMed:34811483). Recognizes and binds poly-ADP-ribose chains: specifically binds auto-poly-ADP-ribosylated PARP1, limiting its activity (PubMed:14500814, PubMed:34102106, PubMed:34811483).

Cellular Location

Nucleus. Chromosome Note=Moves from the nucleoli to the global nuclear chromatin upon DNA damage (PubMed:28002403). Recruited to DNA damage sites following interaction with poly-ADP-ribose chains (PubMed:14500814)

Tissue Location

Expressed in fibroblasts, retinal pigmented epithelial cells and lymphoblastoid cells (at protein level)

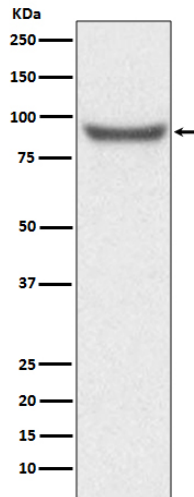
Anti-XRCC1 Rabbit Monoclonal Antibody - Protocols

Provided below are standard protocols that you may find useful for product applications.

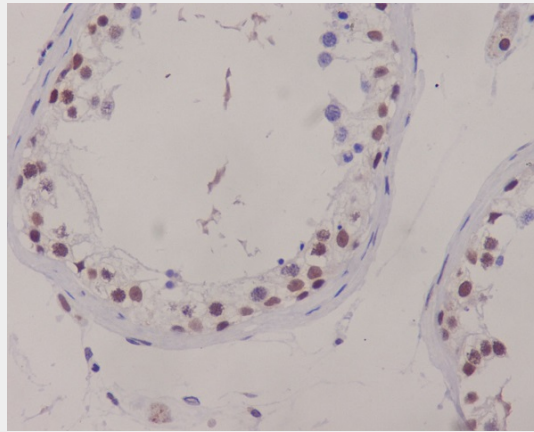
- [Western Blot](#)
- [Blocking Peptides](#)
- [Dot Blot](#)
- [Immunohistochemistry](#)
- [Immunofluorescence](#)
- [Immunoprecipitation](#)
- [Flow Cytometry](#)
- [Cell Culture](#)

Anti-XRCC1 Rabbit Monoclonal Antibody - Images

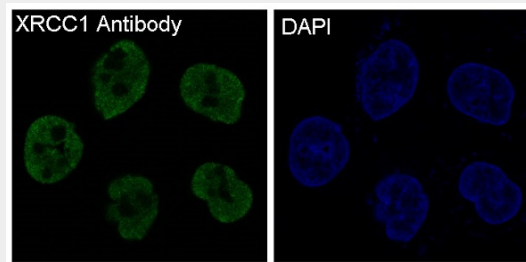




Western blot analysis of XRCC1 expression in HeLa cell lysate.



Immunohistochemical analysis of paraffin-embedded human testis, using XRCC1 Antibody.



Immunofluorescent analysis of HeLa cells, using XRCC1 Antibody.