

**Anti-CD40L CD40LG Rabbit Monoclonal Antibody**  
Catalog # ABO13780**Specification****Anti-CD40L CD40LG Rabbit Monoclonal Antibody - Product Information**

Application	WB
Primary Accession	<a href="#">P29965</a>
Host	Rabbit
Isotype	Rabbit IgG
Reactivity	Human, Mouse
Clonality	Monoclonal
Format	Liquid

**Description**

Anti-CD40L CD40LG Rabbit Monoclonal Antibody . Tested in WB application. This antibody reacts with Human, Mouse.

**Anti-CD40L CD40LG Rabbit Monoclonal Antibody - Additional Information**

**Gene ID** 959

**Other Names**

CD40 ligand, CD40-L, T-cell antigen Gp39, TNF-related activation protein, TRAP, Tumor necrosis factor ligand superfamily member 5, CD154, CD40 ligand, membrane form, CD40 ligand, soluble form, sCD40L, CD40LG, CD40L, TNFSF5, TRAP

**Calculated MW**

29274 MW KDa

**Application Details**

WB 1:500-1:2000

**Subcellular Localization**

Cell membrane; Single-pass type II membrane protein.

**Tissue Specificity**

Specifically expressed on activated CD4+ T- lymphocytes.

**Contents**

Rabbit IgG in phosphate buffered saline, pH 7.4, 150mM NaCl, 0.02% sodium azide and 50% glycerol, 0.4-0.5mg/ml BSA.

**Immunogen**

A synthesized peptide derived from human CD40L

**Purification**

Affinity-chromatography

**Storage**

**Store at -20°C for one year. For short term storage and frequent use, store at 4°C for**

up to one month. Avoid repeated  
freeze-thaw cycles.

## Anti-CD40L CD40LG Rabbit Monoclonal Antibody - Protein Information

**Name** CD40LG

**Synonyms** CD40L, TNFSF5, TRAP

### Function

Cytokine that acts as a ligand to CD40/TNFRSF5 (PubMed:<a href="http://www.uniprot.org/citations/1280226" target="\_blank">1280226</a>, PubMed:<a href="http://www.uniprot.org/citations/31331973" target="\_blank">31331973</a>). Costimulates T-cell proliferation and cytokine production (PubMed:<a href="http://www.uniprot.org/citations/8617933" target="\_blank">8617933</a>). Its cross-linking on T-cells generates a costimulatory signal which enhances the production of IL4 and IL10 in conjunction with the TCR/CD3 ligation and CD28 costimulation (PubMed:<a href="http://www.uniprot.org/citations/8617933" target="\_blank">8617933</a>). Induces the activation of NF-kappa-B (PubMed:<a href="http://www.uniprot.org/citations/15067037" target="\_blank">15067037</a>, PubMed:<a href="http://www.uniprot.org/citations/31331973" target="\_blank">31331973</a>). Induces the activation of kinases MAPK8 and PAK2 in T-cells (PubMed:<a href="http://www.uniprot.org/citations/15067037" target="\_blank">15067037</a>). Induces tyrosine phosphorylation of isoform 3 of CD28 (PubMed:<a href="http://www.uniprot.org/citations/15067037" target="\_blank">15067037</a>). Mediates B-cell proliferation in the absence of co-stimulus as well as IgE production in the presence of IL4 (By similarity). Involved in immunoglobulin class switching (By similarity).

### Cellular Location

Cell membrane; Single-pass type II membrane protein. Cell surface

### Tissue Location

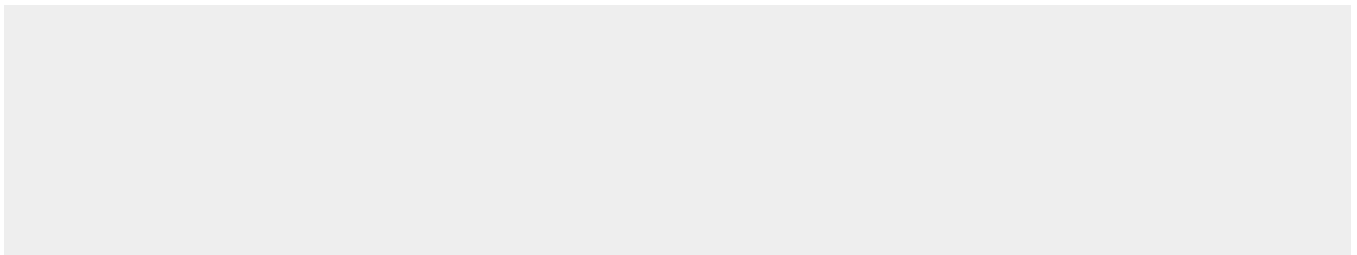
Specifically expressed on activated CD4+ T- lymphocytes

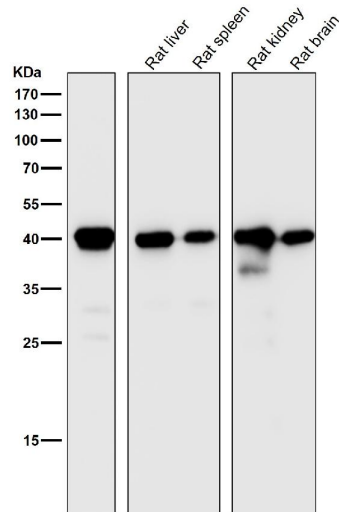
## Anti-CD40L CD40LG Rabbit Monoclonal Antibody - Protocols

Provided below are standard protocols that you may find useful for product applications.

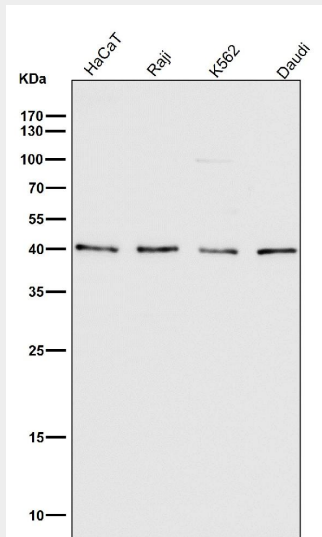
- [Western Blot](#)
- [Blocking Peptides](#)
- [Dot Blot](#)
- [Immunohistochemistry](#)
- [Immunofluorescence](#)
- [Immunoprecipitation](#)
- [Flow Cytometry](#)
- [Cell Culture](#)

## Anti-CD40L CD40LG Rabbit Monoclonal Antibody - Images

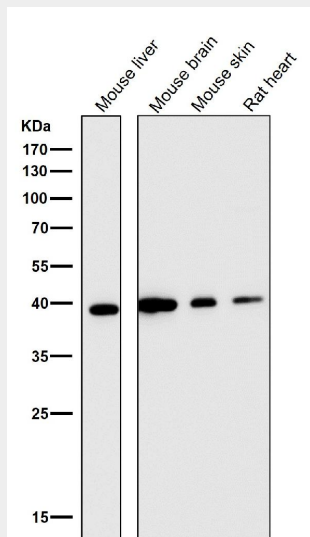




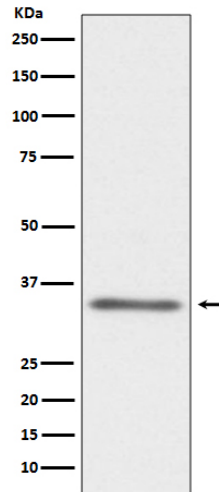
All lanes use the Antibody at 1:1K dilution for 1 hour at room temperature.



All lanes use the Antibody at 1:1K dilution for 1 hour at room temperature.



All lanes use the Antibody at 1:1K dilution for 1 hour at room temperature.



Western blot analysis of CD40L expression in MOLT-4 cell lysate.