

Anti-Axin2/Conductin Rabbit Monoclonal Antibody
Catalog # ABO13778**Specification**

Anti-Axin2/Conductin Rabbit Monoclonal Antibody - Product Information

Application	WB, IHC, IF, ICC
Primary Accession	Q9Y2T1
Host	Rabbit
Isotype	Rabbit IgG
Reactivity	Rat, Human, Mouse
Clonality	Monoclonal
Format	Liquid

Description

Anti-Axin2/Conductin Rabbit Monoclonal Antibody . Tested in WB, IHC, ICC/IF applications. This antibody reacts with Human, Mouse, Rat.

Anti-Axin2/Conductin Rabbit Monoclonal Antibody - Additional Information

Gene ID 8313

Other Names

Axin-2, Axin-like protein, Axil, Axis inhibition protein 2, Conductin, AXIN2

Calculated MW

93558 MW KDa

Application Details

WB 1:500-1:2000
IHC 1:50-1:200
ICC/IF 1:50-1:200

Subcellular Localization

Cytoplasm.

Tissue Specificity

Expressed in brain and lymphoblast.

Contents

Rabbit IgG in phosphate buffered saline, pH 7.4, 150mM NaCl, 0.02% sodium azide and 50% glycerol, 0.4-0.5mg/ml BSA.

Immunogen

A synthesized peptide derived from human Axin2

Purification

Affinity-chromatography

Storage

Store at -20°C for one year. For short term storage and frequent use, store at 4°C for up to one month. Avoid repeated freeze-thaw cycles.

Anti-Axin2/Conductin Rabbit Monoclonal Antibody - Protein Information

Name AXIN2

Function

Inhibitor of the Wnt signaling pathway. Down-regulates beta- catenin. Probably facilitate the phosphorylation of beta-catenin and APC by GSK3B.

Cellular Location

Cytoplasm.

Tissue Location

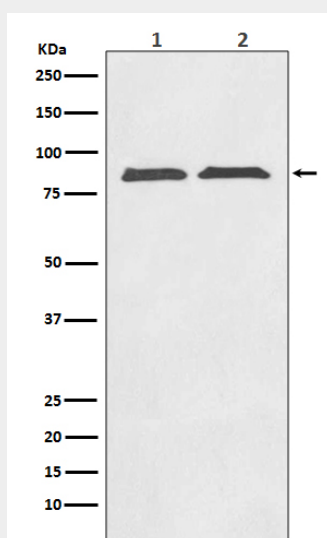
Expressed in brain and lymphoblast.

Anti-Axin2/Conductin Rabbit Monoclonal Antibody - Protocols

Provided below are standard protocols that you may find useful for product applications.

- [Western Blot](#)
- [Blocking Peptides](#)
- [Dot Blot](#)
- [Immunohistochemistry](#)
- [Immunofluorescence](#)
- [Immunoprecipitation](#)
- [Flow Cytometry](#)
- [Cell Culture](#)

Anti-Axin2/Conductin Rabbit Monoclonal Antibody - Images



Western blot analysis of Axin2 expression in (1) SW480 cell lysate; (2) PC-12 cell lysate.