

**Anti-NFAT1 NFATC2 Rabbit Monoclonal Antibody**  
Catalog # ABO13772**Specification****Anti-NFAT1 NFATC2 Rabbit Monoclonal Antibody - Product Information**

Application	WB
Primary Accession	<a href="#">Q13469</a>
Host	Rabbit
Isotype	Rabbit IgG
Reactivity	Human
Clonality	Monoclonal
Format	Liquid

**Description**

Anti-NFAT1 NFATC2 Rabbit Monoclonal Antibody . Tested in WB application. This antibody reacts with Human.

**Anti-NFAT1 NFATC2 Rabbit Monoclonal Antibody - Additional Information**

**Gene ID** 4773

**Other Names**

Nuclear factor of activated T-cells, cytoplasmic 2, NF-ATc2, NFATc2, NFAT pre-existing subunit, NF-ATp, T-cell transcription factor NFAT1, NFATC2, NFAT1, NFATP

**Calculated MW**

100146 MW KDa

**Application Details**

WB 1:500-1:2000

**Subcellular Localization**

Cytoplasm. Nucleus. Cytoplasmic for the phosphorylated form and nuclear after activation that is controlled by calcineurin-mediated dephosphorylation. Rapid nuclear exit of NFATC is thought to be one mechanism by which cells distinguish between sustained and transient calcium signals. The subcellular localization of NFATC plays a key role in the regulation of gene transcription.

**Tissue Specificity**

Expressed in thymus, spleen, heart, testis, brain, placenta, muscle and pancreas. Isoform 1 is highly expressed in the small intestine, heart, testis, prostate, thymus, placenta and thyroid. Isoform 3 is highly expressed in stomach, uterus, placenta, trachea and thyroid..

**Contents**

Rabbit IgG in phosphate buffered saline, pH 7.4, 150mM NaCl, 0.02% sodium azide and 50% glycerol, 0.4-0.5mg/ml BSA.

**Immunogen**

A synthesized peptide derived from human NFAT1

**Purification**

Affinity-chromatography

Storage

**Store at -20°C for one year. For short term storage and frequent use, store at 4°C for up to one month. Avoid repeated freeze-thaw cycles.**

## **Anti-NFAT1 NFATC2 Rabbit Monoclonal Antibody - Protein Information**

**Name** NFATC2

**Synonyms** NFAT1, NFATP

### **Function**

Plays a role in the inducible expression of cytokine genes in T-cells, especially in the induction of the IL-2, IL-3, IL-4, TNF-alpha or GM-CSF (PubMed:<a href="http://www.uniprot.org/citations/15790681" target="\_blank">15790681</a>). Promotes invasive migration through the activation of GPC6 expression and WNT5A signaling pathway (PubMed:<a href="http://www.uniprot.org/citations/21871017" target="\_blank">21871017</a>). Is involved in the negative regulation of chondrogenesis (PubMed:<a href="http://www.uniprot.org/citations/35789258" target="\_blank">35789258</a>). Recruited by AKAP5 to ORAI1 pore- forming subunit of CRAC channels in Ca(2+) signaling microdomains where store-operated Ca(2+) influx is coupled to calmodulin and calcineurin signaling and activation of NFAT-dependent transcriptional responses.

### **Cellular Location**

Cytoplasm. Nucleus. Note=Cytoplasmic for the phosphorylated form and nuclear after activation that is controlled by calcineurin-mediated dephosphorylation. Rapid nuclear exit of NFATC is thought to be one mechanism by which cells distinguish between sustained and transient calcium signals. The subcellular localization of NFATC plays a key role in the regulation of gene transcription

### **Tissue Location**

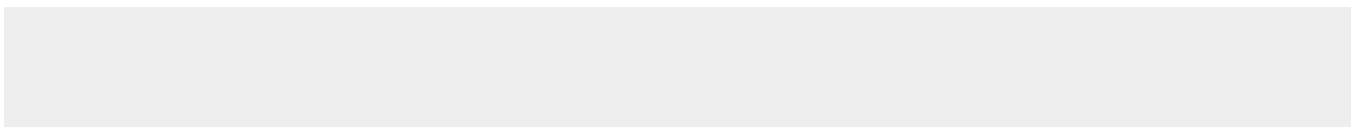
Expressed in thymus, spleen, heart, testis, brain, placenta, muscle and pancreas. Isoform 1 is highly expressed in the small intestine, heart, testis, prostate, thymus, placenta and thyroid Isoform 3 is highly expressed in stomach, uterus, placenta, trachea and thyroid.

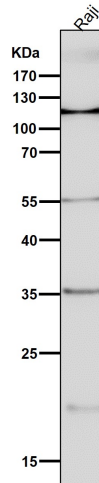
## **Anti-NFAT1 NFATC2 Rabbit Monoclonal Antibody - Protocols**

Provided below are standard protocols that you may find useful for product applications.

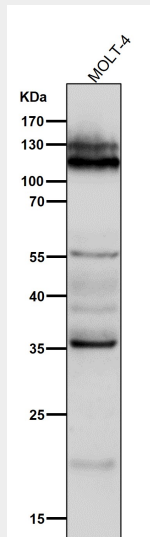
- [Western Blot](#)
- [Blocking Peptides](#)
- [Dot Blot](#)
- [Immunohistochemistry](#)
- [Immunofluorescence](#)
- [Immunoprecipitation](#)
- [Flow Cytometry](#)
- [Cell Culture](#)

## **Anti-NFAT1 NFATC2 Rabbit Monoclonal Antibody - Images**

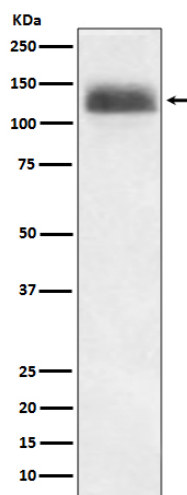




All lanes use the Antibody at 1:5K dilution for 1 hour at room temperature.



All lanes use the Antibody at 1:5K dilution for 1 hour at room temperature.



Western blot analysis of NFAT1 expression in Ramos cell lysate.