

Anti-TIMP2 Rabbit Monoclonal Antibody
Catalog # ABO13765**Specification**

Anti-TIMP2 Rabbit Monoclonal Antibody - Product Information

| | |
|-------------------|------------------------|
| Application | WB, FC |
| Primary Accession | P16035 |
| Host | Rabbit |
| Isotype | Rabbit IgG |
| Reactivity | Human |
| Clonality | Monoclonal |
| Format | Liquid |

Description

Anti-TIMP2 Rabbit Monoclonal Antibody . Tested in WB, Flow Cytometry applications. This antibody reacts with Human.

Anti-TIMP2 Rabbit Monoclonal Antibody - Additional Information

Gene ID 7077

Other Names

Metalloproteinase inhibitor 2, CSC-21K, Tissue inhibitor of metalloproteinases 2, TIMP-2, TIMP2

Calculated MW

24399 MW KDa

Application Details

WB 1:500-1:2000
FC 1:50

Subcellular Localization

Secreted.

Contents

Rabbit IgG in phosphate buffered saline, pH 7.4, 150mM NaCl, 0.02% sodium azide and 50% glycerol, 0.4-0.5mg/ml BSA.

Immunogen

A synthesized peptide derived from human TIMP2

Purification

Affinity-chromatography

Storage

Store at -20°C for one year. For short term storage and frequent use, store at 4°C for up to one month. Avoid repeated freeze-thaw cycles.

Anti-TIMP2 Rabbit Monoclonal Antibody - Protein Information

Name TIMP2

Function

Complexes with metalloproteinases (such as collagenases) and irreversibly inactivates them by binding to their catalytic zinc cofactor. Known to act on MMP-1, MMP-2, MMP-3, MMP-7, MMP-8, MMP-9, MMP-10, MMP-13, MMP-14, MMP-15, MMP-16 and MMP-19.

Cellular Location

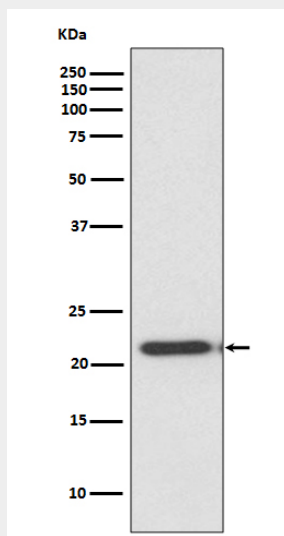
Secreted.

Anti-TIMP2 Rabbit Monoclonal Antibody - Protocols

Provided below are standard protocols that you may find useful for product applications.

- [Western Blot](#)
- [Blocking Peptides](#)
- [Dot Blot](#)
- [Immunohistochemistry](#)
- [Immunofluorescence](#)
- [Immunoprecipitation](#)
- [Flow Cytometry](#)
- [Cell Culture](#)

Anti-TIMP2 Rabbit Monoclonal Antibody - Images



Western blot analysis of TIMP2 expression in HeLa cell lysate.