

**Anti-FABP1/L Fabp Rabbit Monoclonal Antibody**  
Catalog # ABO13763**Specification**

---

**Anti-FABP1/L Fabp Rabbit Monoclonal Antibody - Product Information**

Application	WB, FC
Primary Accession	<a href="#">P07148</a>
Host	Rabbit
Isotype	Rabbit IgG
Reactivity	Human, Mouse
Clonality	Monoclonal
Format	Liquid

**Description**

Anti-FABP1/L Fabp Rabbit Monoclonal Antibody . Tested in WB, Flow Cytometry applications. This antibody reacts with Human, Mouse.

**Anti-FABP1/L Fabp Rabbit Monoclonal Antibody - Additional Information**

**Gene ID** 2168

**Other Names**

Fatty acid-binding protein, liver, Fatty acid-binding protein 1, Liver-type fatty acid-binding protein, L-FABP, FABP1, FABPL

**Calculated MW**

14208 MW KDa

**Application Details**

WB 1:500-1:2000<br>FC 1:50

**Subcellular Localization**

Cytoplasm.

**Contents**

Rabbit IgG in phosphate buffered saline, pH 7.4, 150mM NaCl, 0.02% sodium azide and 50% glycerol, 0.4-0.5mg/ml BSA.

**Immunogen**

A synthesized peptide derived from human FABP1

**Purification**

Affinity-chromatography

Storage

**Store at -20°C for one year. For short term storage and frequent use, store at 4°C for up to one month. Avoid repeated freeze-thaw cycles.**

**Anti-FABP1/L Fabp Rabbit Monoclonal Antibody - Protein Information**

**Name** FABP1

**Synonyms** FABPL

**Function**

Plays a role in lipoprotein-mediated cholesterol uptake in hepatocytes (PubMed:<a href="http://www.uniprot.org/citations/25732850" target="\_blank">25732850</a>). Binds cholesterol (PubMed:<a href="http://www.uniprot.org/citations/25732850" target="\_blank">25732850</a>). Binds free fatty acids and their coenzyme A derivatives, bilirubin, and some other small molecules in the cytoplasm. May be involved in intracellular lipid transport (By similarity).

**Cellular Location**

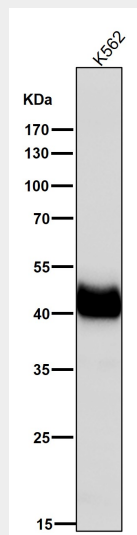
Cytoplasm.

**Anti-FABP1/L Fabp Rabbit Monoclonal Antibody - Protocols**

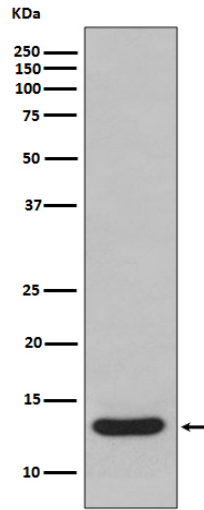
Provided below are standard protocols that you may find useful for product applications.

- [Western Blot](#)
- [Blocking Peptides](#)
- [Dot Blot](#)
- [Immunohistochemistry](#)
- [Immunofluorescence](#)
- [Immunoprecipitation](#)
- [Flow Cytometry](#)
- [Cell Culture](#)

**Anti-FABP1/L Fabp Rabbit Monoclonal Antibody - Images**



All lanes use the Antibody at 1:1K dilution for 1 hour at room temperature.



Western blot analysis of FABP1 expression in human fetal liver lysate.