

**Anti-MyoD1/Myod Rabbit Monoclonal Antibody**  
Catalog # ABO13762**Specification**

---

**Anti-MyoD1/Myod Rabbit Monoclonal Antibody - Product Information**

Application	WB, IP, FC
Primary Accession	<a href="#">P15172</a>
Host	Rabbit
Isotype	Rabbit IgG
Reactivity	Human
Clonality	Monoclonal
Format	Liquid

**Description**

Anti-MyoD1/Myod Rabbit Monoclonal Antibody . Tested in WB, IP, Flow Cytometry applications. This antibody reacts with Human.

**Anti-MyoD1/Myod Rabbit Monoclonal Antibody - Additional Information**

**Gene ID** 4654

**Other Names**

Myoblast determination protein 1, Class C basic helix-loop-helix protein 1, bHLHc1, Myogenic factor 3, Myf-3, MYOD1, BHLHC1, MYF3, MYOD

**Calculated MW**

34501 MW KDa

**Application Details**

WB 1:500-1:2000<br>IP 1:50<br>FC 1:50

**Subcellular Localization**

Nucleus.

**Contents**

Rabbit IgG in phosphate buffered saline, pH 7.4, 150mM NaCl, 0.02% sodium azide and 50% glycerol, 0.4-0.5mg/ml BSA.

**Immunogen**

A synthesized peptide derived from human MyoD1

**Purification**

Affinity-chromatography

Storage

**Store at -20°C for one year. For short term storage and frequent use, store at 4°C for up to one month. Avoid repeated freeze-thaw cycles.**

**Anti-MyoD1/Myod Rabbit Monoclonal Antibody - Protein Information**

**Name** MYOD1

**Synonyms** BHLHC1, MYF3, MYOD

**Function**

Acts as a transcriptional activator that promotes transcription of muscle-specific target genes and plays a role in muscle differentiation. Together with MYF5 and MYOG, co-occupies muscle-specific gene promoter core region during myogenesis. Induces fibroblasts to differentiate into myoblasts. Interacts with and is inhibited by the twist protein. This interaction probably involves the basic domains of both proteins (By similarity).

**Cellular Location**

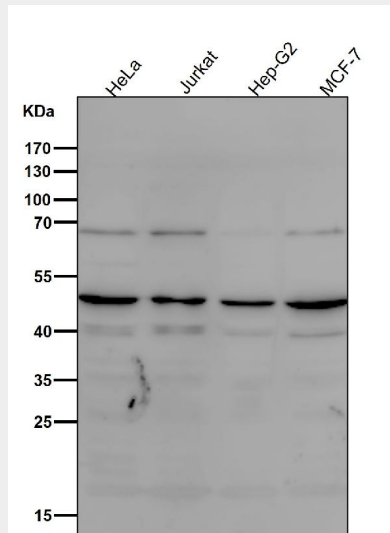
Nucleus.

**Anti-MyoD1/Myod Rabbit Monoclonal Antibody - Protocols**

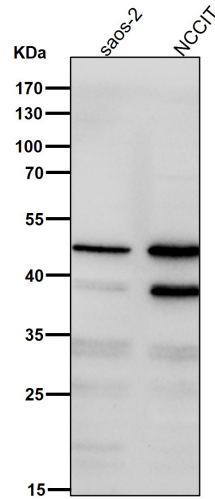
Provided below are standard protocols that you may find useful for product applications.

- [Western Blot](#)
- [Blocking Peptides](#)
- [Dot Blot](#)
- [Immunohistochemistry](#)
- [Immunofluorescence](#)
- [Immunoprecipitation](#)
- [Flow Cytometry](#)
- [Cell Culture](#)

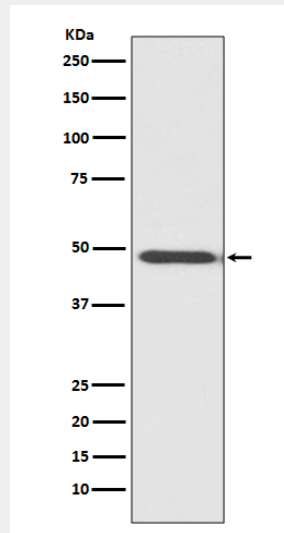
**Anti-MyoD1/Myod Rabbit Monoclonal Antibody - Images**



All lanes use the Antibody at 1:1K dilution for 1 hour at room temperature.



All lanes use the Antibody at 1:1K dilution for 1 hour at room temperature.



Western blot analysis of MyoD1 expression in HeLa cell lysate.