

## Anti-Ezrin Rabbit Monoclonal Antibody Catalog # ABO13761

### Specification

---

#### Anti-Ezrin Rabbit Monoclonal Antibody - Product Information

Application	WB, IHC
Primary Accession	<a href="#">P15311</a>
Host	Rabbit
Isotype	Rabbit IgG
Reactivity	Human
Clonality	Monoclonal
Format	Liquid

#### Description

Anti-Ezrin Rabbit Monoclonal Antibody . Tested in WB, IHC applications. This antibody reacts with Human.

#### Anti-Ezrin Rabbit Monoclonal Antibody - Additional Information

**Gene ID** 7430

#### Other Names

Ezrin, Cytovillin, Villin-2, p81, EZR, VIL2

#### Calculated MW

69413 MW KDa

#### Application Details

WB 1:500-1:2000<br>IHC 1:50-1:200

#### Subcellular Localization

Apical cell membrane ; Peripheral membrane protein ; Cytoplasmic side. Cell projection. Cell projection, microvillus membrane ; Peripheral membrane protein ; Cytoplasmic side. Cell projection, ruffle membrane ; Peripheral membrane protein ; Cytoplasmic side. Cytoplasm, cell cortex. Cytoplasm, cytoskeleton. Localization to the apical membrane of parietal cells depends on the interaction with MPP5. Localizes to cell extensions and peripheral processes of astrocytes (By similarity). Microvillar peripheral membrane protein (cytoplasmic side)..

#### Tissue Specificity

Expressed in cerebral cortex, basal ganglia, hippocampus, hypophysis, and optic nerve. Weakly expressed in brain stem and diencephalon. Stronger expression was detected in gray matter of frontal lobe compared to white matter (at protein level). Component of the microvilli of intestinal epithelial cells. Preferentially expressed in astrocytes of hippocampus, frontal cortex, thalamus, parahippocampal cortex, amygdala, insula, and corpus callosum. Not detected in neurons in most tissues studied..

#### Contents

Rabbit IgG in phosphate buffered saline, pH 7.4, 150mM NaCl, 0.02% sodium azide and 50% glycerol, 0.4-0.5mg/ml BSA.

**Immunogen**

A synthesized peptide derived from human Ezrin

**Purification**

Affinity-chromatography

**Storage**

**Store at -20°C for one year. For short term storage and frequent use, store at 4°C for up to one month. Avoid repeated freeze-thaw cycles.**

**Anti-Ezrin Rabbit Monoclonal Antibody - Protein Information**

**Name** EZR

**Synonyms** VIL2

**Function**

Probably involved in connections of major cytoskeletal structures to the plasma membrane. In epithelial cells, required for the formation of microvilli and membrane ruffles on the apical pole. Along with PLEKHG6, required for normal macropinocytosis.

**Cellular Location**

Apical cell membrane; Peripheral membrane protein; Cytoplasmic side. Cell projection. Cell projection, microvillus membrane; Peripheral membrane protein; Cytoplasmic side. Cell projection, ruffle membrane; Peripheral membrane protein; Cytoplasmic side. Cytoplasm, cell cortex. Cytoplasm, cytoskeleton. Cell projection, microvillus {ECO:0000250|UniProtKB:P26040}. Note=Localization to the apical membrane of parietal cells depends on the interaction with PALS1 Localizes to cell extensions and peripheral processes of astrocytes (By similarity). Microvillar peripheral membrane protein (cytoplasmic side). {ECO:0000250|UniProtKB:P31977}

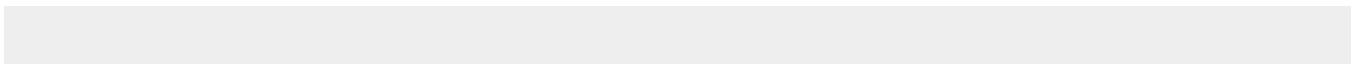
**Tissue Location**

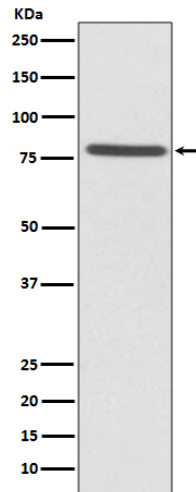
Expressed in cerebral cortex, basal ganglia, hippocampus, hypophysis, and optic nerve. Weakly expressed in brain stem and diencephalon. Stronger expression was detected in gray matter of frontal lobe compared to white matter (at protein level). Component of the microvilli of intestinal epithelial cells. Preferentially expressed in astrocytes of hippocampus, frontal cortex, thalamus, parahippocampal cortex, amygdala, insula, and corpus callosum. Not detected in neurons in most tissues studied

**Anti-Ezrin Rabbit Monoclonal Antibody - Protocols**

Provided below are standard protocols that you may find useful for product applications.

- [Western Blot](#)
- [Blocking Peptides](#)
- [Dot Blot](#)
- [Immunohistochemistry](#)
- [Immunofluorescence](#)
- [Immunoprecipitation](#)
- [Flow Cytometry](#)
- [Cell Culture](#)

**Anti-Ezrin Rabbit Monoclonal Antibody - Images**



Western blot analysis of Ezrin expression in HeLa cell lysate.