

**Anti-CD147 BSG Rabbit Monoclonal Antibody**  
Catalog # ABO13753**Specification****Anti-CD147 BSG Rabbit Monoclonal Antibody - Product Information**

Application	WB, IHC, IF, ICC
Primary Accession	<a href="#">P35613</a>
Host	Rabbit
Isotype	Rabbit IgG
Reactivity	Rat, Human, Mouse
Clonality	Monoclonal
Format	Liquid

**Description**

Anti-CD147 BSG Rabbit Monoclonal Antibody . Tested in WB, IHC, ICC/IF applications. This antibody reacts with Human, Mouse, Rat.

**Anti-CD147 BSG Rabbit Monoclonal Antibody - Additional Information**

**Gene ID** 682

**Other Names**

Basigin, 5F7, Collagenase stimulatory factor, Extracellular matrix metalloproteinase inducer, EMMPRIN, Hepatoma-associated antigen, HAb18G, Leukocyte activation antigen M6, OK blood group antigen, Tumor cell-derived collagenase stimulatory factor, TCSF, CD147, BSG (<a href="http://www.genenames.org/cgi-bin/gene\_symbol\_report?hgnc\_id=1116" target="\_blank">HGNC:1116</a>)

**Calculated MW**

42200 MW KDa

**Application Details**

WB 1:500-1:2000<br>IHC 1:50-1:200<br>ICC/IF 1:50-1:200

**Subcellular Localization**

Cell membrane ; Single-pass type I membrane protein. Melanosome. Colocalizes with SLC16A1 and SLC16A8. Identified by mass spectrometry in melanosome fractions from stage I to stage IV..

**Tissue Specificity**

Present only in vascular endothelium in non- neoplastic regions of the brain, whereas it is present in tumor cells but not in proliferating blood vessels in malignant gliomas.

**Contents**

Rabbit IgG in phosphate buffered saline, pH 7.4, 150mM NaCl, 0.02% sodium azide and 50% glycerol, 0.4-0.5mg/ml BSA.

**Immunogen**

A synthesized peptide derived from human CD147

**Purification**

Affinity-chromatography

Storage

**Store at -20°C for one year. For short term storage and frequent use, store at 4°C for up to one month. Avoid repeated freeze-thaw cycles.**

## Anti-CD147 BSG Rabbit Monoclonal Antibody - Protein Information

Name BSG ([HGNC:1116](#))

### Function

[Isoform 1]: Essential for normal retinal maturation and development (By similarity). Acts as a retinal cell surface receptor for NXNL1 and plays an important role in NXNL1-mediated survival of retinal cone photoreceptors (PubMed:<a href="http://www.uniprot.org/citations/25957687" target="\_blank">25957687</a>). In association with glucose transporter SLC16A1/GLUT1 and NXNL1, promotes retinal cone survival by enhancing aerobic glycolysis and accelerating the entry of glucose into photoreceptors (PubMed:<a href="http://www.uniprot.org/citations/25957687" target="\_blank">25957687</a>). May act as a potent stimulator of IL6 secretion in multiple cell lines that include monocytes (PubMed:<a href="http://www.uniprot.org/citations/21620857" target="\_blank">21620857</a>).

### Cellular Location

Melanosome. Note=Identified by mass spectrometry in melanosome fractions from stage I to stage IV. [Isoform 2]: Cell membrane; Single-pass type I membrane protein {ECO:0000250|UniProtKB:P26453}. Endosome Endoplasmic reticulum membrane; Single-pass type I membrane protein {ECO:0000250|UniProtKB:P26453} Basolateral cell membrane; Single-pass type I membrane protein {ECO:0000250|UniProtKB:P26453} [Isoform 4]: Cell membrane; Single-pass type I membrane protein {ECO:0000250|UniProtKB:P26453}

### Tissue Location

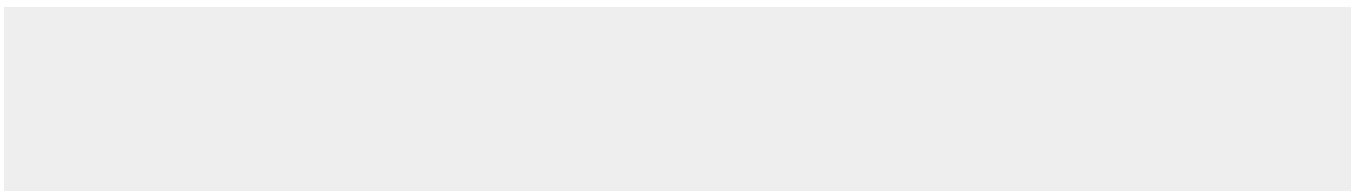
[Isoform 1]: Retina-specific (PubMed:25957687). Expressed in retinal cone photoreceptors (at protein level) (PubMed:25957687). [Isoform 3]: Highly expressed in the bone marrow, fetal liver, lung, testis and thymus.

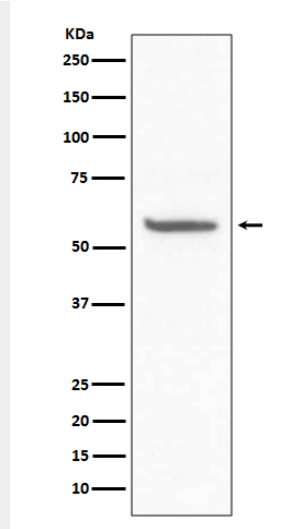
## Anti-CD147 BSG Rabbit Monoclonal Antibody - Protocols

Provided below are standard protocols that you may find useful for product applications.

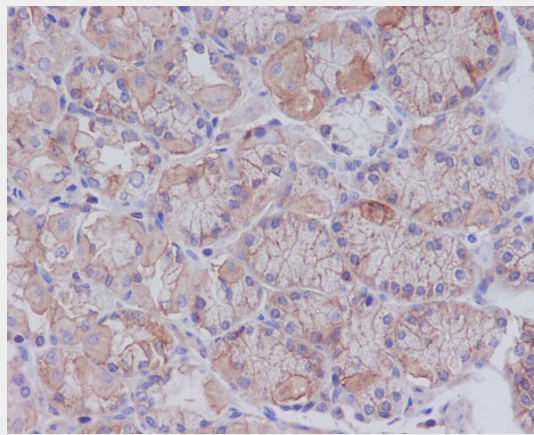
- [Western Blot](#)
- [Blocking Peptides](#)
- [Dot Blot](#)
- [Immunohistochemistry](#)
- [Immunofluorescence](#)
- [Immunoprecipitation](#)
- [Flow Cytometry](#)
- [Cell Culture](#)

## Anti-CD147 BSG Rabbit Monoclonal Antibody - Images

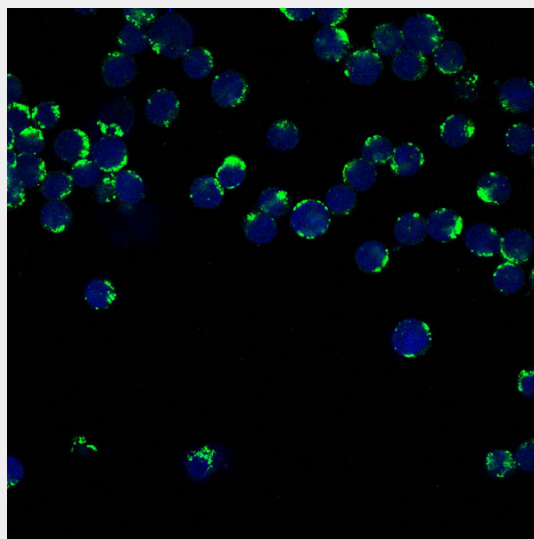




Western blot analysis of CD147 expression in Mouse kidney lysate.



Immunohistochemical analysis of paraffin-embedded human stomach cancer, using CD147 Antibody.



Immunofluorescent analysis of Jurkat cells, using using CD147 Antibody.