

**Anti-PDHA1/Pdh E1Alpha Rabbit Monoclonal Antibody**  
Catalog # ABO13743

**Specification**

---

**Anti-PDHA1/Pdh E1Alpha Rabbit Monoclonal Antibody - Product Information**

Application	WB, IHC, IF, ICC, IP, FC
Primary Accession	<a href="#">P08559</a>
Host	Rabbit
Isotype	Rabbit IgG
Reactivity	Rat, Human, Mouse
Clonality	Monoclonal
Format	Liquid

**Description**

Anti-PDHA1/Pdh E1Alpha Rabbit Monoclonal Antibody . Tested in WB, IHC, ICC/IF, IP, Flow Cytometry applications. This antibody reacts with Human, Mouse, Rat.

**Anti-PDHA1/Pdh E1Alpha Rabbit Monoclonal Antibody - Additional Information**

**Gene ID** 5160

**Other Names**

Pyruvate dehydrogenase E1 component subunit alpha, somatic form, mitochondrial, 1.2.4.1, PDHE1-A type I, PDHA1, PHE1A

**Calculated MW**

43296 MW KDa

**Application Details**

WB 1:500-1:2000<br>IHC 1:50-1:200<br>ICC/IF 1:50-1:200<br>IP 1:50<br>FC 1:50

**Subcellular Localization**

Mitochondrion matrix.

**Tissue Specificity**

Ubiquitous.

**Contents**

Rabbit IgG in phosphate buffered saline, pH 7.4, 150mM NaCl, 0.02% sodium azide and 50% glycerol, 0.4-0.5mg/ml BSA.

**Immunogen**

A synthesized peptide derived from human PDHA1

**Purification**

Affinity-chromatography

**Storage**

**Store at -20°C for one year. For short term storage and frequent use, store at 4°C for up to one month. Avoid repeated**

freeze-thaw cycles.

## Anti-PDHA1/Pdh E1Alpha Rabbit Monoclonal Antibody - Protein Information

**Name** PDHA1

**Synonyms** PHE1A

### Function

The pyruvate dehydrogenase complex catalyzes the overall conversion of pyruvate to acetyl-CoA and CO(2), and thereby links the glycolytic pathway to the tricarboxylic cycle.

### Cellular Location

Mitochondrion matrix.

### Tissue Location

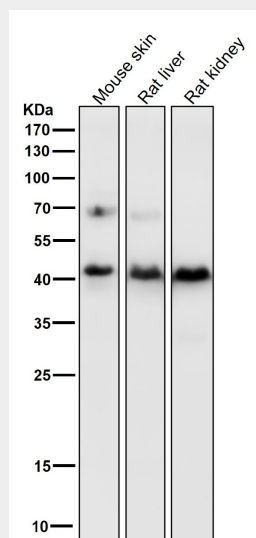
Ubiquitous.

## Anti-PDHA1/Pdh E1Alpha Rabbit Monoclonal Antibody - Protocols

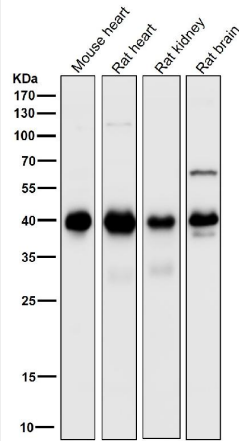
Provided below are standard protocols that you may find useful for product applications.

- [Western Blot](#)
- [Blocking Peptides](#)
- [Dot Blot](#)
- [Immunohistochemistry](#)
- [Immunofluorescence](#)
- [Immunoprecipitation](#)
- [Flow Cytometry](#)
- [Cell Culture](#)

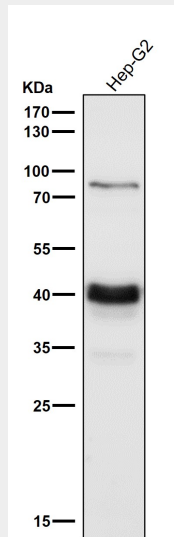
## Anti-PDHA1/Pdh E1Alpha Rabbit Monoclonal Antibody - Images



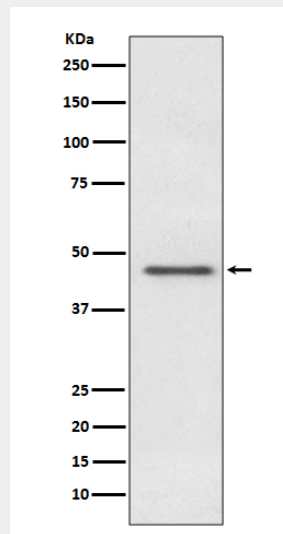
All lanes use the Antibody at 1:2K dilution for 1 hour at room temperature.



All lanes use the Antibody at 1:2K dilution for 1 hour at room temperature.



All lanes use the Antibody at 1:2K dilution for 1 hour at room temperature.



Western blot analysis of PDHA1 expression in HeLa cell lysate.