

Anti-LYVE1 Rabbit Monoclonal Antibody Catalog # ABO13736

Specification

Anti-LYVE1 Rabbit Monoclonal Antibody - Product Information

Application	WB
Primary Accession	Q9Y5Y7
Host	Rabbit
Isotype	Rabbit IgG
Reactivity	Rat, Human, Mouse
Clonality	Monoclonal
Format	Liquid

Description

Anti-LYVE1 Rabbit Monoclonal Antibody . Tested in WB application. This antibody reacts with Human, Mouse, Rat.

Anti-LYVE1 Rabbit Monoclonal Antibody - Additional Information

Gene ID 10894

Other Names

Lymphatic vessel endothelial hyaluronic acid receptor 1, LYVE-1, Cell surface retention sequence-binding protein 1, CRSBP-1, Extracellular link domain-containing protein 1, Hyaluronic acid receptor, LYVE1, CRSBP1, HAR, XLKD1

Calculated MW

35213 MW KDa

Application Details

WB 1:500-1:2000

Subcellular Localization

Membrane ; Single-pass type I membrane protein. Localized to the plasma membrane and in vesicles near extranuclear membranes which may represent trans-Golgi network (TGN) and endosomes/prelysosomal compartments. Undergoes ligand- dependent internalization and recycling at the cell surface.

Tissue Specificity

Mainly expressed in endothelial cells lining lymphatic vessels..

Contents

Rabbit IgG in phosphate buffered saline, pH 7.4, 150mM NaCl, 0.02% sodium azide and 50% glycerol, 0.4-0.5mg/ml BSA.

Immunogen

A synthesized peptide derived from human LYVE1

Purification

Affinity-chromatography

Storage

Store at -20°C for one year. For short term storage and frequent use, store at 4°C for up to one month. Avoid repeated freeze-thaw cycles.

Anti-LYVE1 Rabbit Monoclonal Antibody - Protein Information

Name LYVE1

Synonyms CRSBP1, HAR, XLKD1

Function

Ligand-specific transporter trafficking between intracellular organelles (TGN) and the plasma membrane. Plays a role in autocrine regulation of cell growth mediated by growth regulators containing cell surface retention sequence binding (CRS). May act as a hyaluronan (HA) transporter, either mediating its uptake for catabolism within lymphatic endothelial cells themselves, or its transport into the lumen of afferent lymphatic vessels for subsequent re-uptake and degradation in lymph nodes (PubMed:10037799). Binds to pericellular hyaluronan matrices deposited on the surface of leukocytes and facilitates cell adhesion and migration through lymphatic endothelium (PubMed:26823460).

Cellular Location

Cell membrane; Single-pass type I membrane protein. Note=Localized to the plasma membrane and in vesicles near extranuclear membranes which may represent trans- Golgi network (TGN) and endosomes/prelysosomal compartments. Undergoes ligand-dependent internalization and recycling at the cell surface Localizes at cell-cell junctions

Tissue Location

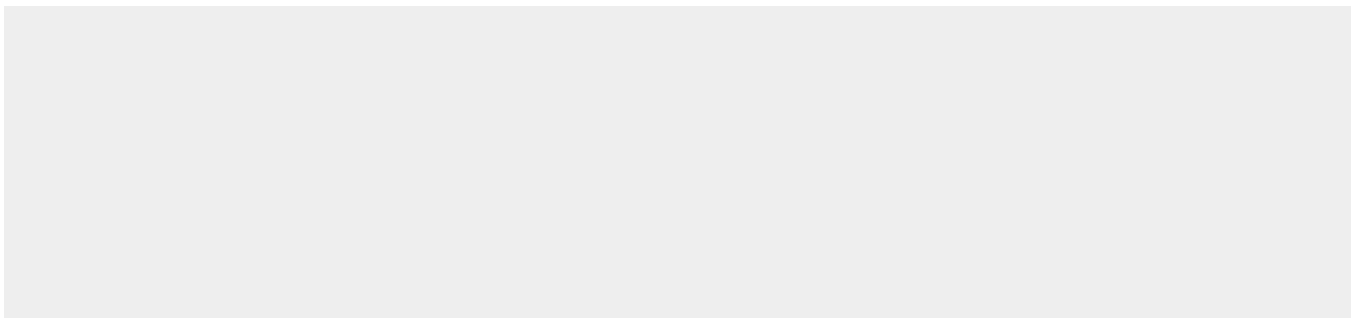
Mainly expressed in endothelial cells lining lymphatic vessels.

Anti-LYVE1 Rabbit Monoclonal Antibody - Protocols

Provided below are standard protocols that you may find useful for product applications.

- [Western Blot](#)
- [Blocking Peptides](#)
- [Dot Blot](#)
- [Immunohistochemistry](#)
- [Immunofluorescence](#)
- [Immunoprecipitation](#)
- [Flow Cytometry](#)
- [Cell Culture](#)

Anti-LYVE1 Rabbit Monoclonal Antibody - Images



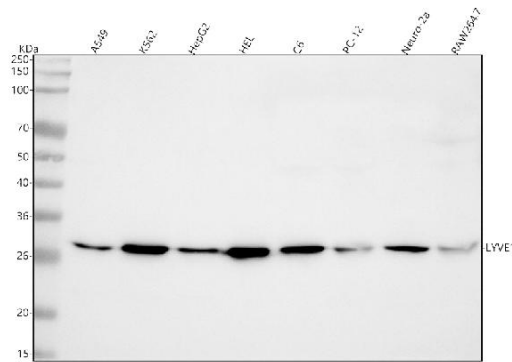


Figure 1. Western blot analysis of LYVE1 using anti-LYVE1 antibody (M04027).

Electrophoresis was performed on a 5-20% SDS-PAGE gel at 70V (Stacking gel) / 90V (Resolving gel) for 2-3 hours. The sample well of each lane was loaded with 30 ug of sample under reducing conditions.

- Lane 1: human A549 whole cell lysates,
- Lane 2: human K562 whole cell lysates,
- Lane 3: human HepG2 whole cell lysates,
- Lane 4: human HEL whole cell lysates,
- Lane 5: rat C6 whole cell lysates,
- Lane 6: rat PC-12 whole cell lysates,
- Lane 7: mouse Neuro-2a whole cell lysates,
- Lane 8: mouse RAW264.7 whole cell lysates.

After electrophoresis, proteins were transferred to a nitrocellulose membrane at 150 mA for 50-90 minutes. Blocked the membrane with 5% non-fat milk/TBS for 1.5 hour at RT. The membrane was incubated with rabbit anti-LYVE1 antigen affinity purified monoclonal antibody (Catalog # M04027) at 1:500 overnight at 4°C, then washed with TBS-0.1%Tween 3 times with 5 minutes each and probed with a goat anti-rabbit IgG-HRP secondary antibody at a dilution of 1:500 for 1.5 hour at RT. The signal is developed using an Enhanced Chemiluminescent detection (ECL) kit (Catalog # EK1002) with Tanon 5200 system. A specific band was detected for LYVE1 at approximately 29 kDa. The expected band size for LYVE1 is at 35 kDa.