

Anti-PDIA6/Erp5 Rabbit Monoclonal Antibody
Catalog # ABO13735**Specification****Anti-PDIA6/Erp5 Rabbit Monoclonal Antibody - Product Information**

Application	WB, IF, ICC, FC
Primary Accession	Q15084
Host	Rabbit
Isotype	Rabbit IgG
Reactivity	Rat, Human, Mouse
Clonality	Monoclonal
Format	Liquid

Description

Anti-PDIA6/Erp5 Rabbit Monoclonal Antibody . Tested in WB, ICC/IF, Flow Cytometry applications. This antibody reacts with Human, Mouse, Rat.

Anti-PDIA6/Erp5 Rabbit Monoclonal Antibody - Additional Information

Gene ID 10130

Other Names

Protein disulfide-isomerase A6, 5.3.4.1, Endoplasmic reticulum protein 5, ER protein 5, ERp5, Protein disulfide isomerase P5, Thioredoxin domain-containing protein 7, PDIA6, ERP5, P5, TXNDC7

Calculated MW

48121 MW KDa

Application Details

WB 1:500-1:2000
ICC/IF 1:50-1:200
FC 1:50

Subcellular Localization

Endoplasmic reticulum lumen. Cell membrane. Melanosome. Identified by mass spectrometry in melanosome fractions from stage I to stage IV (PubMed:12643545)..

Tissue Specificity

Expressed in platelets (at protein level)..

Contents

Rabbit IgG in phosphate buffered saline, pH 7.4, 150mM NaCl, 0.02% sodium azide and 50% glycerol, 0.4-0.5mg/ml BSA.

Immunogen

A synthesized peptide derived from human PDIA6

Purification

Affinity-chromatography

Storage

Store at -20°C for one year. For short term storage and frequent use, store at 4°C for

up to one month. Avoid repeated freeze-thaw cycles.

Anti-PDIA6/Erp5 Rabbit Monoclonal Antibody - Protein Information

Name PDIA6

Synonyms ERP5, P5, TXNDC7

Function

May function as a chaperone that inhibits aggregation of misfolded proteins (PubMed: [12204115](http://www.uniprot.org/citations/12204115)). Negatively regulates the unfolded protein response (UPR) through binding to UPR sensors such as ERN1, which in turn inactivates ERN1 signaling (PubMed: [24508390](http://www.uniprot.org/citations/24508390)). May also regulate the UPR via the EIF2AK3 UPR sensor (PubMed: [24508390](http://www.uniprot.org/citations/24508390)). Plays a role in platelet aggregation and activation by agonists such as convulxin, collagen and thrombin (PubMed: [15466936](http://www.uniprot.org/citations/15466936)).

Cellular Location

Endoplasmic reticulum lumen. Cell membrane. Melanosome. Note=Identified by mass spectrometry in melanosome fractions from stage I to stage IV (PubMed:12643545)

Tissue Location

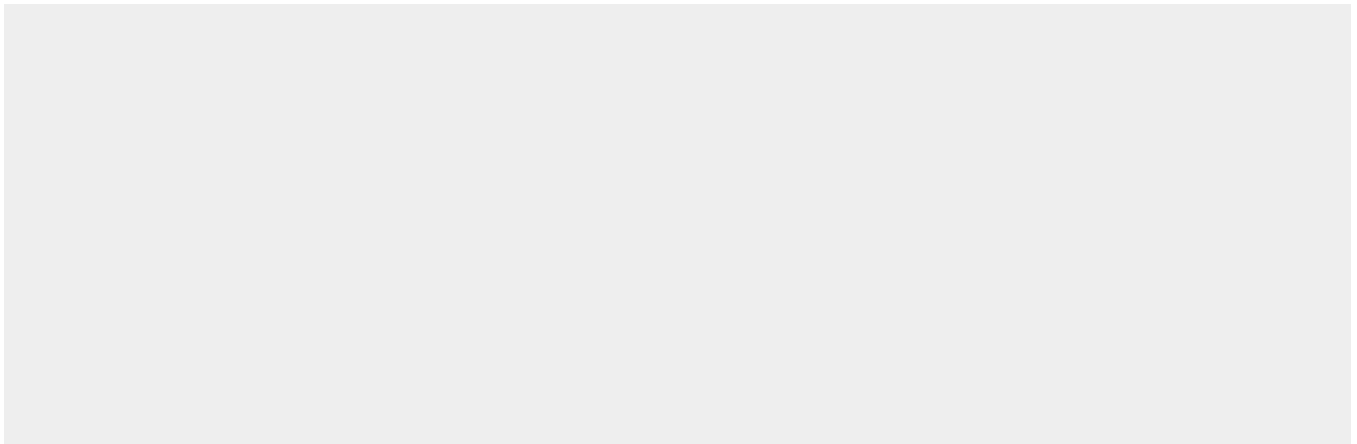
Expressed in platelets (at protein level).

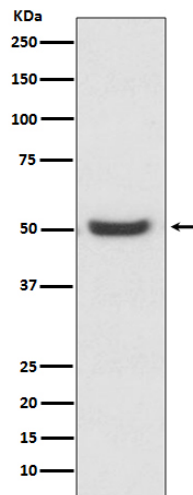
Anti-PDIA6/Erp5 Rabbit Monoclonal Antibody - Protocols

Provided below are standard protocols that you may find useful for product applications.

- [Western Blot](#)
- [Blocking Peptides](#)
- [Dot Blot](#)
- [Immunohistochemistry](#)
- [Immunofluorescence](#)
- [Immunoprecipitation](#)
- [Flow Cytometry](#)
- [Cell Culture](#)

Anti-PDIA6/Erp5 Rabbit Monoclonal Antibody - Images





Western blot analysis of PDIA6 expression in K562 cell lysate.