

**Anti-LAMA3/Laminin 5 Rabbit Monoclonal Antibody**  
Catalog # ABO13731**Specification****Anti-LAMA3/Laminin 5 Rabbit Monoclonal Antibody - Product Information**

Application	WB, IF, ICC
Primary Accession	<a href="#">Q16787</a>
Host	Rabbit
Isotype	Rabbit IgG
Reactivity	Human
Clonality	Monoclonal
Format	Liquid

**Description**

Anti-LAMA3/Laminin 5 Rabbit Monoclonal Antibody . Tested in WB, ICC/IF applications. This antibody reacts with Human.

**Anti-LAMA3/Laminin 5 Rabbit Monoclonal Antibody - Additional Information**

**Gene ID** 3909

**Other Names**

Laminin subunit alpha-3, Epiligrin 170 kDa subunit, E170, Epiligrin subunit alpha, Kalinin subunit alpha, Laminin-5 subunit alpha, Laminin-6 subunit alpha, Laminin-7 subunit alpha, Nicein subunit alpha, LAMA3, LAMNA

**Calculated MW**

366649 MW KDa

**Application Details**

WB 1:500-1:2000<br>ICC/IF 1:50-1:200

**Subcellular Localization**

Secreted, extracellular space, extracellular matrix, basement membrane. Major component.

**Tissue Specificity**

Skin; respiratory, urinary, and digestive epithelia and in other specialized tissues with prominent secretory or protective functions. Epithelial basement membrane, and epithelial cell tongue that migrates into a wound bed. A differential and focal expression of the subunit alpha-3 is observed in the CNS.

**Contents**

Rabbit IgG in phosphate buffered saline, pH 7.4, 150mM NaCl, 0.02% sodium azide and 50% glycerol, 0.4-0.5mg/ml BSA.

**Immunogen**

A synthesized peptide derived from human LAMA3

**Purification**

Affinity-chromatography

**Storage**

**Store at -20°C for one year. For short term storage and frequent use, store at 4°C for up to one month. Avoid repeated freeze-thaw cycles.**

**Anti-LAMA3/Laminin 5 Rabbit Monoclonal Antibody - Protein Information**

**Name** LAMA3

**Synonyms** LAMNA

**Function**

Binding to cells via a high affinity receptor, laminin is thought to mediate the attachment, migration and organization of cells into tissues during embryonic development by interacting with other extracellular matrix components.

**Cellular Location**

Secreted, extracellular space, extracellular matrix, basement membrane. Note=Major component

**Tissue Location**

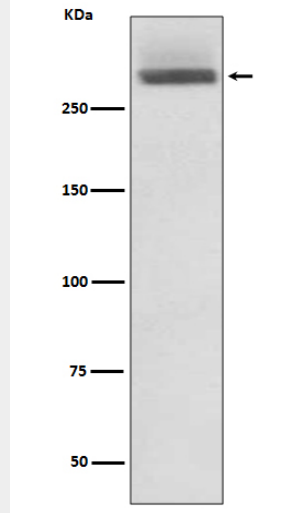
Skin; respiratory, urinary, and digestive epithelia and in other specialized tissues with prominent secretory or protective functions. Epithelial basement membrane, and epithelial cell tongue that migrates into a wound bed. A differential and focal expression of the subunit alpha-3 is observed in the CNS

**Anti-LAMA3/Laminin 5 Rabbit Monoclonal Antibody - Protocols**

Provided below are standard protocols that you may find useful for product applications.

- [Western Blot](#)
- [Blocking Peptides](#)
- [Dot Blot](#)
- [Immunohistochemistry](#)
- [Immunofluorescence](#)
- [Immunoprecipitation](#)
- [Flow Cytometry](#)
- [Cell Culture](#)

**Anti-LAMA3/Laminin 5 Rabbit Monoclonal Antibody - Images**



Western blot analysis of LAMA3 expression in HeLa cell lysate.