

Anti-DUSP1/Mkp 1 Rabbit Monoclonal Antibody
Catalog # ABO13724**Specification****Anti-DUSP1/Mkp 1 Rabbit Monoclonal Antibody - Product Information**

Application	WB, IHC, IF, ICC, IP, FC
Primary Accession	P28562
Host	Rabbit
Isotype	Rabbit IgG
Reactivity	Rat, Human, Mouse
Clonality	Monoclonal
Format	Liquid

Description

Anti-DUSP1/Mkp 1 Rabbit Monoclonal Antibody . Tested in WB, IHC, ICC/IF, IP, Flow Cytometry applications. This antibody reacts with Human, Mouse, Rat.

Anti-DUSP1/Mkp 1 Rabbit Monoclonal Antibody - Additional Information

Gene ID 1843

Other Names

Dual specificity protein phosphatase 1, 3.1.3.16, 3.1.3.48, Dual specificity protein phosphatase hVH1, Mitogen-activated protein kinase phosphatase 1, MAP kinase phosphatase 1, MKP-1, Protein-tyrosine phosphatase CL100, DUSP1 ([HGNC:3064](http://www.genenames.org/cgi-bin/gene_symbol_report?hgnc_id=3064))

Calculated MW

39298 MW KDa

Application Details

WB 1:500-1:2000
IHC 1:50-1:200
ICC/IF 1:50-1:200
IP 1:50
FC 1:50

Subcellular Localization

Nucleus.

Tissue Specificity

Expressed at high levels in the lung, liver placenta and pancreas. Moderate levels seen in the heart and skeletal muscle. Lower levels found in the brain and kidney..

Contents

Rabbit IgG in phosphate buffered saline, pH 7.4, 150mM NaCl, 0.02% sodium azide and 50% glycerol, 0.4-0.5mg/ml BSA.

Immunogen

A synthesized peptide derived from human DUSP1

Purification

Affinity-chromatography

Storage

Store at -20°C for one year. For short term storage and frequent use, store at 4°C for up to one month. Avoid repeated freeze-thaw cycles.

Anti-DUSP1/Mkp 1 Rabbit Monoclonal Antibody - Protein Information

Name DUSP1 ([HGNC:3064](#))

Function

Dual specificity phosphatase that dephosphorylates MAP kinase MAPK1/ERK2 on both 'Thr-183' and 'Tyr-185', regulating its activity during the meiotic cell cycle.

Cellular Location

Nucleus {ECO:0000250|UniProtKB:Q91790}.

Tissue Location

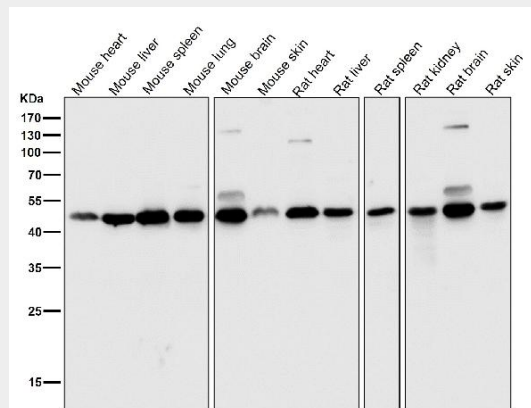
Expressed at high levels in the lung, liver placenta and pancreas. Moderate levels seen in the heart and skeletal muscle. Lower levels found in the brain and kidney

Anti-DUSP1/Mkp 1 Rabbit Monoclonal Antibody - Protocols

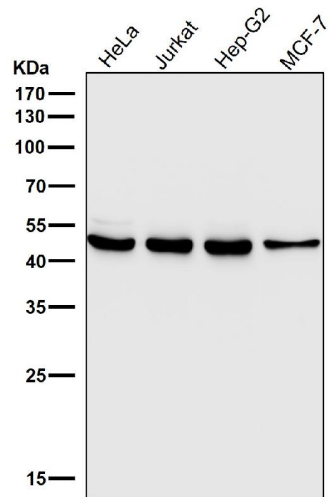
Provided below are standard protocols that you may find useful for product applications.

- [Western Blot](#)
- [Blocking Peptides](#)
- [Dot Blot](#)
- [Immunohistochemistry](#)
- [Immunofluorescence](#)
- [Immunoprecipitation](#)
- [Flow Cytometry](#)
- [Cell Culture](#)

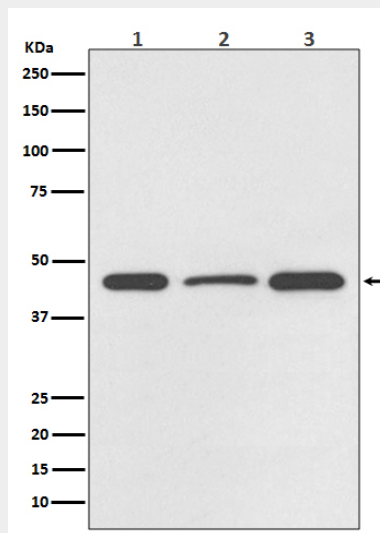
Anti-DUSP1/Mkp 1 Rabbit Monoclonal Antibody - Images



All lanes use the Antibody at 1:1K dilution for 1 hour at room temperature.



All lanes use the Antibody at 1:1K dilution for 1 hour at room temperature.



Western blot analysis of DUSP1 expression in (1) HeLa cell lysate; (2) NIH/3T3 cell lysate; (3) PC-12 cell lysate.