

Anti-SUZ12 Rabbit Monoclonal Antibody
Catalog # ABO13721**Specification**

Anti-SUZ12 Rabbit Monoclonal Antibody - Product Information

Application	WB, IF, ICC, IP
Primary Accession	Q15022
Host	Rabbit
Isotype	Rabbit IgG
Reactivity	Rat, Human, Mouse
Clonality	Monoclonal
Format	Liquid

Description

Anti-SUZ12 Rabbit Monoclonal Antibody . Tested in WB, ICC/IF, IP applications. This antibody reacts with Human, Mouse, Rat.

Anti-SUZ12 Rabbit Monoclonal Antibody - Additional Information

Gene ID 23512

Other Names

Polycomb protein SUZ12, Chromatin precipitated E2F target 9 protein, ChET 9 protein, Joined to JAZF1 protein, Suppressor of zeste 12 protein homolog, SUZ12, CHET9, JAZ1, KIAA0160

Calculated MW

83055 MW KDa

Application Details

WB 1:500-1:2000
ICC/IF 1:50-1:200
IP 1:50

Subcellular Localization

Nucleus.

Tissue Specificity

Overexpressed in breast and colon cancer..

Contents

Rabbit IgG in phosphate buffered saline, pH 7.4, 150mM NaCl, 0.02% sodium azide and 50% glycerol, 0.4-0.5mg/ml BSA.

Immunogen

A synthesized peptide derived from human SUZ12

Purification

Affinity-chromatography

Storage

Store at -20°C for one year. For short term storage and frequent use, store at 4°C for up to one month. Avoid repeated

freeze-thaw cycles.

Anti-SUZ12 Rabbit Monoclonal Antibody - Protein Information

Name SUZ12

Synonyms CHET9, JJAZ1, KIAA0160

Function

Polycomb group (PcG) protein. Component of the PRC2 complex, which methylates 'Lys-9' (H3K9me) and 'Lys-27' (H3K27me) of histone H3, leading to transcriptional repression of the affected target gene (PubMed:15225548, PubMed:15231737, PubMed:15385962, PubMed:16618801, PubMed:17344414, PubMed:18285464, PubMed:28229514, PubMed:29499137, PubMed:31959557). The PRC2 complex may also serve as a recruiting platform for DNA methyltransferases, thereby linking two epigenetic repression systems (PubMed:12351676, PubMed:12435631, PubMed:15099518, PubMed:15225548, PubMed:15385962, PubMed:15684044, PubMed:16431907, PubMed:18086877, PubMed:18285464). Genes repressed by the PRC2 complex include HOXC8, HOXA9, MYT1 and CDKN2A (PubMed:15231737, PubMed:16618801, PubMed:17200670, PubMed:31959557).

Cellular Location

Nucleus Note=Localizes to chromatin as part of the PRC2 complex

Tissue Location

Overexpressed in breast and colon cancer.

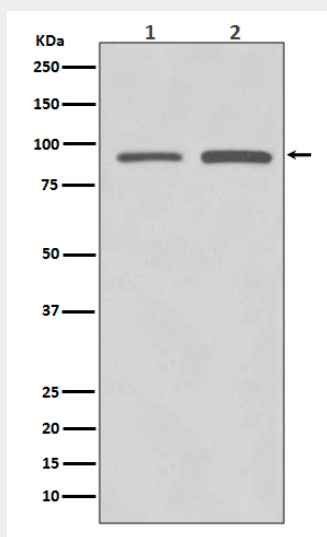
Anti-SUZ12 Rabbit Monoclonal Antibody - Protocols

Provided below are standard protocols that you may find useful for product applications.

- [Western Blot](#)
- [Blocking Peptides](#)
- [Dot Blot](#)
- [Immunohistochemistry](#)
- [Immunofluorescence](#)
- [Immunoprecipitation](#)
- [Flow Cytometry](#)

- [Cell Culture](#)

Anti-SUZ12 Rabbit Monoclonal Antibody - Images



Western blot analysis of SUZ12 expression in (1) HeLa cell lysate; (2) SW480 cell lysate.