

Anti-HSPA2 Rabbit Monoclonal Antibody
Catalog # ABO13719

Specification

Anti-HSPA2 Rabbit Monoclonal Antibody - Product Information

Application	WB, IHC
Primary Accession	P54652
Host	Rabbit
Isotype	Rabbit IgG
Reactivity	Rat, Human, Mouse
Clonality	Monoclonal
Format	Liquid

Description

Anti-HSPA2 Rabbit Monoclonal Antibody . Tested in WB, IHC applications. This antibody reacts with Human, Mouse, Rat.

Anti-HSPA2 Rabbit Monoclonal Antibody - Additional Information

Gene ID 3306

Other Names

Heat shock-related 70 kDa protein 2, Heat shock 70 kDa protein 2, Heat shock protein family A member 2, HSPA2

Calculated MW

70021 MW KDa

Application Details

WB 1:1000-1:2000
IHC 1:50-1:200

Contents

Rabbit IgG in phosphate buffered saline, pH 7.4, 150mM NaCl, 0.02% sodium azide and 50% glycerol, 0.4-0.5mg/ml BSA.

Immunogen

A synthesized peptide derived from human HSPA2

Purification

Affinity-chromatography

Storage

Store at -20°C for one year. For short term storage and frequent use, store at 4°C for up to one month. Avoid repeated freeze-thaw cycles.

Anti-HSPA2 Rabbit Monoclonal Antibody - Protein Information

Name HSPA2

Function

Molecular chaperone implicated in a wide variety of cellular processes, including protection of the proteome from stress, folding and transport of newly synthesized polypeptides, activation of proteolysis of misfolded proteins and the formation and dissociation of protein complexes. Plays a pivotal role in the protein quality control system, ensuring the correct folding of proteins, the re-folding of misfolded proteins and controlling the targeting of proteins for subsequent degradation. This is achieved through cycles of ATP binding, ATP hydrolysis and ADP release, mediated by co-chaperones. The affinity for polypeptides is regulated by its nucleotide bound state. In the ATP-bound form, it has a low affinity for substrate proteins. However, upon hydrolysis of the ATP to ADP, it undergoes a conformational change that increases its affinity for substrate proteins. It goes through repeated cycles of ATP hydrolysis and nucleotide exchange, which permits cycles of substrate binding and release (PubMed:26865365). Plays a role in spermatogenesis. In association with SHCBP1L may participate in the maintenance of spindle integrity during meiosis in male germ cells (By similarity).

Cellular Location

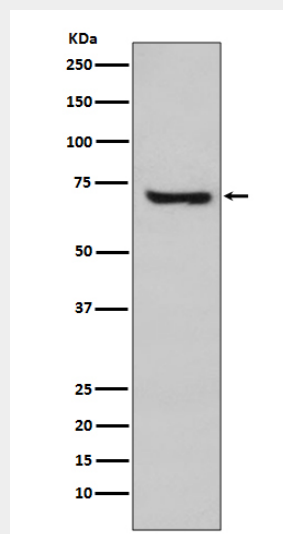
Cytoplasm, cytoskeleton, spindle {ECO:0000250|UniProtKB:P17156}. Note=Colocalizes with SHCBP1L at spindle during the meiosis process. {ECO:0000250|UniProtKB:P17156}

Anti-HSPA2 Rabbit Monoclonal Antibody - Protocols

Provided below are standard protocols that you may find useful for product applications.

- [Western Blot](#)
- [Blocking Peptides](#)
- [Dot Blot](#)
- [Immunohistochemistry](#)
- [Immunofluorescence](#)
- [Immunoprecipitation](#)
- [Flow Cytometry](#)
- [Cell Culture](#)

Anti-HSPA2 Rabbit Monoclonal Antibody - Images



Western blot analysis of HSPA2 expression in MCF-7 cell lysate.