

**Anti-A-RAF Rabbit Monoclonal Antibody**  
Catalog # ABO13716**Specification**

---

**Anti-A-RAF Rabbit Monoclonal Antibody - Product Information**

Application	WB, IHC, IF, ICC, FC
Primary Accession	<a href="#">P10398</a>
Host	Rabbit
Isotype	Rabbit IgG
Reactivity	Human
Clonality	Monoclonal
Format	Liquid

**Description**

Anti-A-RAF Rabbit Monoclonal Antibody . Tested in WB, IHC, ICC/IF, Flow Cytometry applications. This antibody reacts with Human.

**Anti-A-RAF Rabbit Monoclonal Antibody - Additional Information**

**Gene ID** 369

**Other Names**

Serine/threonine-protein kinase A-Raf, 2.7.11.1, Proto-oncogene A-Raf, Proto-oncogene A-Raf-1, Proto-oncogene Pks, ARAF, ARAF1, PKS, PKS2

**Calculated MW**

67585 MW KDa

**Application Details**

WB 1:500-1:2000<br>IHC 1:50-1:200<br>ICC/IF 1:50-1:200<br>FC 1:50

**Tissue Specificity**

Predominantly in urogenital tissues.

**Contents**

Rabbit IgG in phosphate buffered saline, pH 7.4, 150mM NaCl, 0.02% sodium azide and 50% glycerol, 0.4-0.5mg/ml BSA.

**Immunogen**

A synthesized peptide derived from human A-RAF

**Purification**

Affinity-chromatography

**Storage**

**Store at -20°C for one year. For short term storage and frequent use, store at 4°C for up to one month. Avoid repeated freeze-thaw cycles.**

**Anti-A-RAF Rabbit Monoclonal Antibody - Protein Information**

**Name** ARAF

**Synonyms** ARAF1, PKS, PKS2

**Function**

Involved in the transduction of mitogenic signals from the cell membrane to the nucleus. May also regulate the TOR signaling cascade. Phosphorylates PFKFB2 (PubMed:<a href="http://www.uniprot.org/citations/36402789" target="\_blank">36402789</a>).

**Tissue Location**

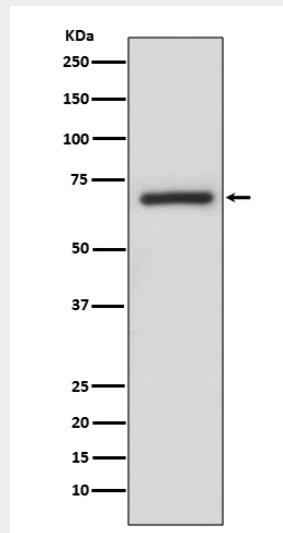
Predominantly in urogenital tissues.

**Anti-A-RAF Rabbit Monoclonal Antibody - Protocols**

Provided below are standard protocols that you may find useful for product applications.

- [Western Blot](#)
- [Blocking Peptides](#)
- [Dot Blot](#)
- [Immunohistochemistry](#)
- [Immunofluorescence](#)
- [Immunoprecipitation](#)
- [Flow Cytometry](#)
- [Cell Culture](#)

**Anti-A-RAF Rabbit Monoclonal Antibody - Images**



Western blot analysis of A-RAF expression in A375 cell lysate.