

**Anti-CDCA3 Rabbit Monoclonal Antibody**  
Catalog # ABO13713**Specification**

---

**Anti-CDCA3 Rabbit Monoclonal Antibody - Product Information**

Application	WB, IF, ICC
Primary Accession	<a href="#">Q99618</a>
Host	Rabbit
Isotype	Rabbit IgG
Reactivity	Rat, Human, Mouse
Clonality	Monoclonal
Format	Liquid

**Description**

Anti-CDCA3 Rabbit Monoclonal Antibody . Tested in WB, ICC/IF applications. This antibody reacts with Human, Mouse, Rat.

**Anti-CDCA3 Rabbit Monoclonal Antibody - Additional Information**

**Gene ID** 83461

**Other Names**

Cell division cycle-associated protein 3, Gene-rich cluster protein C8, Trigger of mitotic entry protein 1, TOME-1, CDCA3, C8, GRCC8, TOME1

**Calculated MW**

28998 MW KDa

**Application Details**

WB 1:500-1:1000<br>ICC/IF 1:50-1:100

**Subcellular Localization**

Cytoplasm, cytosol.

**Contents**

Rabbit IgG in phosphate buffered saline, pH 7.4, 150mM NaCl, 0.02% sodium azide and 50% glycerol, 0.4-0.5mg/ml BSA.

**Immunogen**

A synthesized peptide derived from human CDCA3

**Purification**

Affinity-chromatography

**Storage**

**Store at -20°C for one year. For short term storage and frequent use, store at 4°C for up to one month. Avoid repeated freeze-thaw cycles.**

**Anti-CDCA3 Rabbit Monoclonal Antibody - Protein Information**

**Name** CDCA3

**Synonyms** C8, GRCC8, TOME1

**Function**

F-box-like protein which is required for entry into mitosis. Acts by participating in E3 ligase complexes that mediate the ubiquitination and degradation of WEE1 kinase at G2/M phase (By similarity).

**Cellular Location**

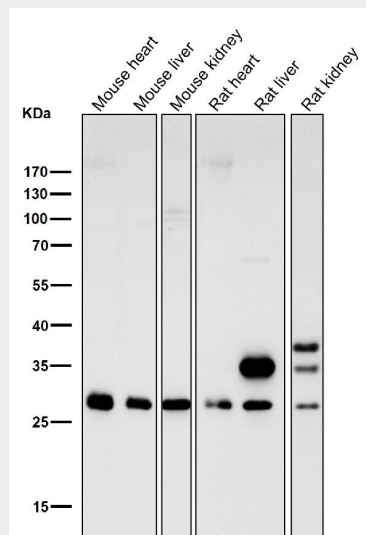
Cytoplasm, cytosol.

**Anti-CDCA3 Rabbit Monoclonal Antibody - Protocols**

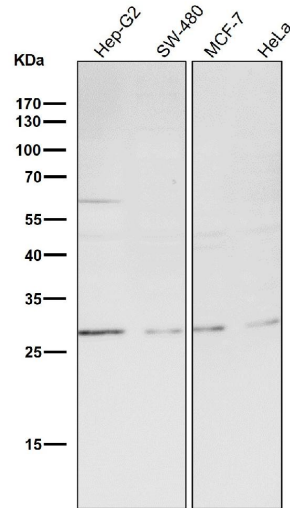
Provided below are standard protocols that you may find useful for product applications.

- [Western Blot](#)
- [Blocking Peptides](#)
- [Dot Blot](#)
- [Immunohistochemistry](#)
- [Immunofluorescence](#)
- [Immunoprecipitation](#)
- [Flow Cytometry](#)
- [Cell Culture](#)

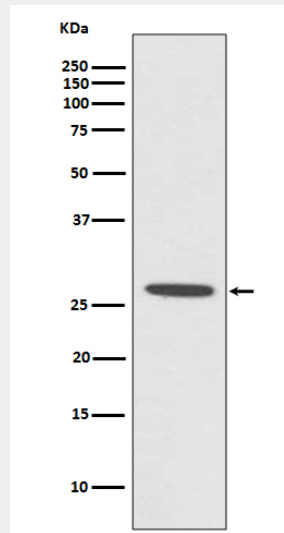
**Anti-CDCA3 Rabbit Monoclonal Antibody - Images**



All lanes use the Antibody at 1:500 dilution for 1 hour at room temperature.



All lanes use the Antibody at 1:500 dilution for 1 hour at room temperature.



Western blot analysis of CDCA3 expression in MCF7 cell lysate.