

## Anti-Hsp20 Rabbit Monoclonal Antibody Catalog # ABO13711

### Specification

---

#### Anti-Hsp20 Rabbit Monoclonal Antibody - Product Information

Application	WB, IHC, FC
Primary Accession	<a href="#">O14558</a>
Host	Rabbit
Isotype	Rabbit IgG
Reactivity	Rat, Human, Mouse
Clonality	Monoclonal
Format	Liquid

#### Description

Anti-Hsp20 Rabbit Monoclonal Antibody . Tested in WB, IHC, Flow Cytometry applications. This antibody reacts with Human, Mouse, Rat.

#### Anti-Hsp20 Rabbit Monoclonal Antibody - Additional Information

**Gene ID** 126393

#### Other Names

Heat shock protein beta-6, HspB6, Heat shock 20 kDa-like protein p20, Heat shock protein family B member 6, HSPB6

#### Calculated MW

17136 MW KDa

#### Application Details

WB 1:5000-1:10000<br>IHC 1:50-1:200<br>FC 1:50

#### Subcellular Localization

Cytoplasm. Nucleus. Translocates to nuclear foci during heat shock.

#### Contents

Rabbit IgG in phosphate buffered saline, pH 7.4, 150mM NaCl, 0.02% sodium azide and 50% glycerol, 0.4-0.5mg/ml BSA.

#### Immunogen

A synthesized peptide derived from human Hsp20

#### Purification

Affinity-chromatography

#### Storage

**Store at -20°C for one year. For short term storage and frequent use, store at 4°C for up to one month. Avoid repeated freeze-thaw cycles.**

#### Anti-Hsp20 Rabbit Monoclonal Antibody - Protein Information

**Name** HSPB6

**Function**

Small heat shock protein which functions as a molecular chaperone probably maintaining denatured proteins in a folding- competent state. Seems to have versatile functions in various biological processes. Plays a role in regulating muscle function such as smooth muscle vasorelaxation and cardiac myocyte contractility. May regulate myocardial angiogenesis implicating KDR. Overexpression mediates cardioprotection and angiogenesis after induced damage. Stabilizes monomeric YWHAZ thereby supporting YWHAZ chaperone-like activity.

**Cellular Location**

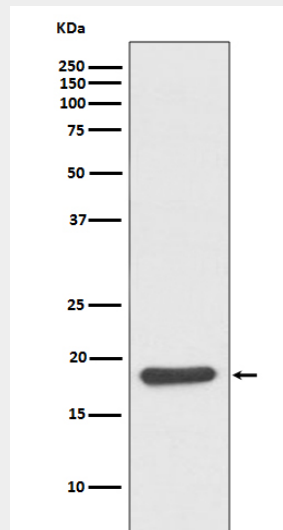
Cytoplasm. Nucleus. Secreted Note=Translocates to nuclear foci during heat shock

**Anti-Hsp20 Rabbit Monoclonal Antibody - Protocols**

Provided below are standard protocols that you may find useful for product applications.

- [Western Blot](#)
- [Blocking Peptides](#)
- [Dot Blot](#)
- [Immunohistochemistry](#)
- [Immunofluorescence](#)
- [Immunoprecipitation](#)
- [Flow Cytometry](#)
- [Cell Culture](#)

**Anti-Hsp20 Rabbit Monoclonal Antibody - Images**



Western blot analysis of Hsp20 expression in mouse skeletal muscle lysate.