

**Anti-HSPA4 Rabbit Monoclonal Antibody**  
Catalog # ABO13710

**Specification**

---

**Anti-HSPA4 Rabbit Monoclonal Antibody - Product Information**

Application	WB, IHC, IF, ICC, FC
Primary Accession	<a href="#">P34932</a>
Host	Rabbit
Isotype	Rabbit IgG
Reactivity	Rat, Human, Mouse
Clonality	Monoclonal
Format	Liquid

**Description**

Anti-HSPA4 Rabbit Monoclonal Antibody . Tested in WB, IHC, ICC/IF, Flow Cytometry applications. This antibody reacts with Human, Mouse, Rat.

**Anti-HSPA4 Rabbit Monoclonal Antibody - Additional Information**

**Gene ID** 3308

**Other Names**

Heat shock 70 kDa protein 4, HSP70RY, Heat shock 70-related protein APG-2, Heat shock protein family H member 2, HSPA4, APG2, HSPH2 {ECO:0000303|PubMed:18663603}

**Calculated MW**

94331 MW KDa

**Application Details**

WB 1:500-1:2000<br>IHC 1:50-1:200<br>ICC/IF 1:50-1:200<br>FC 1:50

**Subcellular Localization**

Cytoplasm.

**Contents**

Rabbit IgG in phosphate buffered saline, pH 7.4, 150mM NaCl, 0.02% sodium azide and 50% glycerol, 0.4-0.5mg/ml BSA.

**Immunogen**

A synthesized peptide derived from human HSPA4

**Purification**

Affinity-chromatography

**Storage**

**Store at -20°C for one year. For short term storage and frequent use, store at 4°C for up to one month. Avoid repeated freeze-thaw cycles.**

**Anti-HSPA4 Rabbit Monoclonal Antibody - Protein Information**

**Name** HSPA4

**Synonyms** APG2, HSPH2 {ECO:0000303|PubMed:18663603}

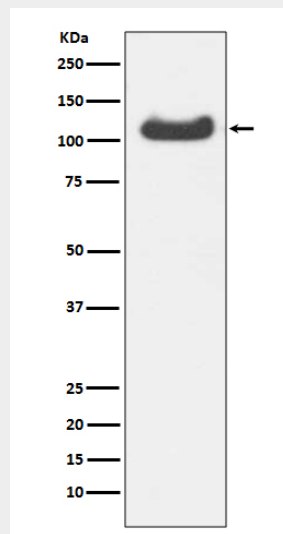
**Cellular Location**  
Cytoplasm.

### Anti-HSPA4 Rabbit Monoclonal Antibody - Protocols

Provided below are standard protocols that you may find useful for product applications.

- [Western Blot](#)
- [Blocking Peptides](#)
- [Dot Blot](#)
- [Immunohistochemistry](#)
- [Immunofluorescence](#)
- [Immunoprecipitation](#)
- [Flow Cytometry](#)
- [Cell Culture](#)

### Anti-HSPA4 Rabbit Monoclonal Antibody - Images



Western blot analysis of HSPA4 expression in HepG2 cell lysate.