

Anti-CDC45/Cdc45L Rabbit Monoclonal Antibody
Catalog # ABO13708**Specification****Anti-CDC45/Cdc45L Rabbit Monoclonal Antibody - Product Information**

Application	WB, IHC, IF, ICC, FC
Primary Accession	O75419
Host	Rabbit
Isotype	Rabbit IgG
Reactivity	Rat, Human, Mouse
Clonality	Monoclonal
Format	Liquid

Description

Anti-CDC45/Cdc45L Rabbit Monoclonal Antibody . Tested in WB, IHC, ICC/IF, Flow Cytometry applications. This antibody reacts with Human, Mouse, Rat.

Anti-CDC45/Cdc45L Rabbit Monoclonal Antibody - Additional Information

Gene ID 8318

Other Names

Cell division control protein 45 homolog, PORC-PI-1, CDC45 (http://www.genenames.org/cgi-bin/gene_symbol_report?hgnc_id=1739 target="_blank">HGNC:1739), CDC45L, CDC45L2

Calculated MW

65569 MW KDa

Application Details

WB 1:500-1:2000
IHC 1:50-1:200
ICC/IF 1:50-1:200
FC 1:50

Subcellular Localization

Cytoplasm. Nucleus.

Tissue Specificity

Widely expressed, highest levels are found in adult testis and thymus and in fetal liver.

Contents

Rabbit IgG in phosphate buffered saline, pH 7.4, 150mM NaCl, 0.02% sodium azide and 50% glycerol, 0.4-0.5mg/ml BSA.

Immunogen

A synthesized peptide derived from human CDC45

Purification

Affinity-chromatography

Storage

Store at -20°C for one year. For short term storage and frequent use, store at 4°C for

up to one month. Avoid repeated
freeze-thaw cycles.

Anti-CDC45/Cdc45L Rabbit Monoclonal Antibody - Protein Information

Name CDC45 ([HGNC:1739](#))

Synonyms CDC45L, CDC45L2

Function

Required for initiation of chromosomal DNA replication. Core component of CDC45-MCM-GINS (CMG) helicase, the molecular machine that unwinds template DNA during replication, and around which the replisome is built.

Cellular Location

Nucleus. Chromosome. Note=Associates with chromatin

Tissue Location

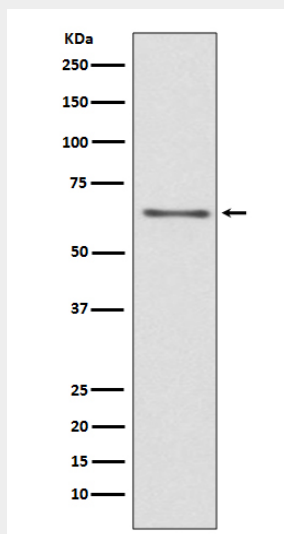
Widely expressed, highest levels are found in adult testis and thymus and in fetal liver

Anti-CDC45/Cdc45L Rabbit Monoclonal Antibody - Protocols

Provided below are standard protocols that you may find useful for product applications.

- [Western Blot](#)
- [Blocking Peptides](#)
- [Dot Blot](#)
- [Immunohistochemistry](#)
- [Immunofluorescence](#)
- [Immunoprecipitation](#)
- [Flow Cytometry](#)
- [Cell Culture](#)

Anti-CDC45/Cdc45L Rabbit Monoclonal Antibody - Images



Western blot analysis of CDC45 expression in Jurkat cell lysate.