

Anti-TRAF2 Rabbit Monoclonal Antibody
Catalog # ABO13689

Specification

Anti-TRAF2 Rabbit Monoclonal Antibody - Product Information

Application	WB, IHC, IF, ICC, IP, FC
Primary Accession	Q12933
Host	Rabbit
Isotype	Rabbit IgG
Reactivity	Rat, Human, Mouse
Clonality	Monoclonal
Format	Liquid

Description

Anti-TRAF2 Rabbit Monoclonal Antibody . Tested in WB, IHC, ICC/IF, IP, Flow Cytometry applications. This antibody reacts with Human, Mouse, Rat.

Anti-TRAF2 Rabbit Monoclonal Antibody - Additional Information

Gene ID 7186

Other Names

TNF receptor-associated factor 2, 2.3.2.27, E3 ubiquitin-protein ligase TRAF2, RING-type E3 ubiquitin transferase TRAF2, Tumor necrosis factor type 2 receptor-associated protein 3, TRAF2, TRAP3

Calculated MW

55859 MW KDa

Application Details

WB 1:500-1:1000
IHC 1:50-1:200
ICC/IF 1:50-1:200
IP 1:40
FC 1:50

Subcellular Localization

Cytoplasm.

Contents

Rabbit IgG in phosphate buffered saline, pH 7.4, 150mM NaCl, 0.02% sodium azide and 50% glycerol, 0.4-0.5mg/ml BSA.

Immunogen

A synthesized peptide derived from human TRAF2

Purification

Affinity-chromatography

Storage

Store at -20°C for one year. For short term storage and frequent use, store at 4°C for up to one month. Avoid repeated freeze-thaw cycles.

Anti-TRAF2 Rabbit Monoclonal Antibody - Protein Information

Name TRAF2

Synonyms TRAP3

Function

Regulates activation of NF-kappa-B and JNK and plays a central role in the regulation of cell survival and apoptosis (PubMed:22212761). Required for normal antibody isotype switching from IgM to IgG. Has E3 ubiquitin-protein ligase activity and promotes 'Lys- 63'-linked ubiquitination of target proteins, such as BIRC3, RIPK1 and TICAM1. Is an essential constituent of several E3 ubiquitin-protein ligase complexes, where it promotes the ubiquitination of target proteins by bringing them into contact with other E3 ubiquitin ligases. Regulates BIRC2 and BIRC3 protein levels by inhibiting their autoubiquitination and subsequent degradation; this does not depend on the TRAF2 RING-type zinc finger domain. Plays a role in mediating activation of NF-kappa-B by EIF2AK2/PKR. In complex with BIRC2 or BIRC3, promotes ubiquitination of IKBKE.

Cellular Location

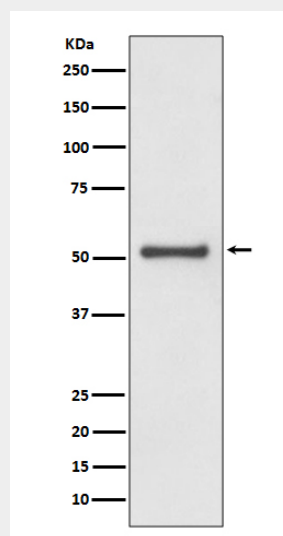
Cytoplasm

Anti-TRAF2 Rabbit Monoclonal Antibody - Protocols

Provided below are standard protocols that you may find useful for product applications.

- [Western Blot](#)
- [Blocking Peptides](#)
- [Dot Blot](#)
- [Immunohistochemistry](#)
- [Immunofluorescence](#)
- [Immunoprecipitation](#)
- [Flow Cytometry](#)
- [Cell Culture](#)

Anti-TRAF2 Rabbit Monoclonal Antibody - Images



Western blot analysis of TRAF2 expression in HeLa cell lysate.