

Anti-SOX11 Rabbit Monoclonal Antibody
Catalog # ABO13685**Specification**

Anti-SOX11 Rabbit Monoclonal Antibody - Product Information

Application	WB, IF, ICC, IP
Primary Accession	P35716
Host	Rabbit
Isotype	Rabbit IgG
Reactivity	Rat, Human, Mouse
Clonality	Monoclonal
Format	Liquid

Description

Anti-SOX11 Rabbit Monoclonal Antibody . Tested in WB, ICC/IF, IP applications. This antibody reacts with Human, Mouse, Rat.

Anti-SOX11 Rabbit Monoclonal Antibody - Additional Information

Gene ID 6664

Other Names

Transcription factor SOX-11, SOX11

Calculated MW

46679 MW KDa

Application Details

WB 1:1000-1:2000
ICC/IF 1:50-1:200
IP 1:50

Subcellular Localization

Nucleus.

Tissue Specificity

Expressed mainly in the nervous system, brain (fetus and adult) and hear (adult)..

Contents

Rabbit IgG in phosphate buffered saline, pH 7.4, 150mM NaCl, 0.02% sodium azide and 50% glycerol, 0.4-0.5mg/ml BSA.

Immunogen

A synthesized peptide derived from human SOX11

Purification

Affinity-chromatography

Storage

Store at -20°C for one year. For short term storage and frequent use, store at 4°C for up to one month. Avoid repeated freeze-thaw cycles.

Anti-SOX11 Rabbit Monoclonal Antibody - Protein Information

Name SOX11

Function

Transcription factor that acts as a transcriptional activator (PubMed:24886874, PubMed:26543203). Binds cooperatively with POU3F2/BRN2 or POU3F1/OCT6 to gene promoters, which enhances transcriptional activation (By similarity). Acts as a transcriptional activator of TEAD2 by binding to its gene promoter and first intron (By similarity). Plays a redundant role with SOX4 and SOX12 in cell survival of developing tissues such as the neural tube, branchial arches and somites, thereby contributing to organogenesis (By similarity).

Cellular Location

Nucleus {ECO:0000255|PROSITE-ProRule:PRU00267, ECO:0000269|PubMed:24886874, ECO:0000269|PubMed:35938035}

Tissue Location

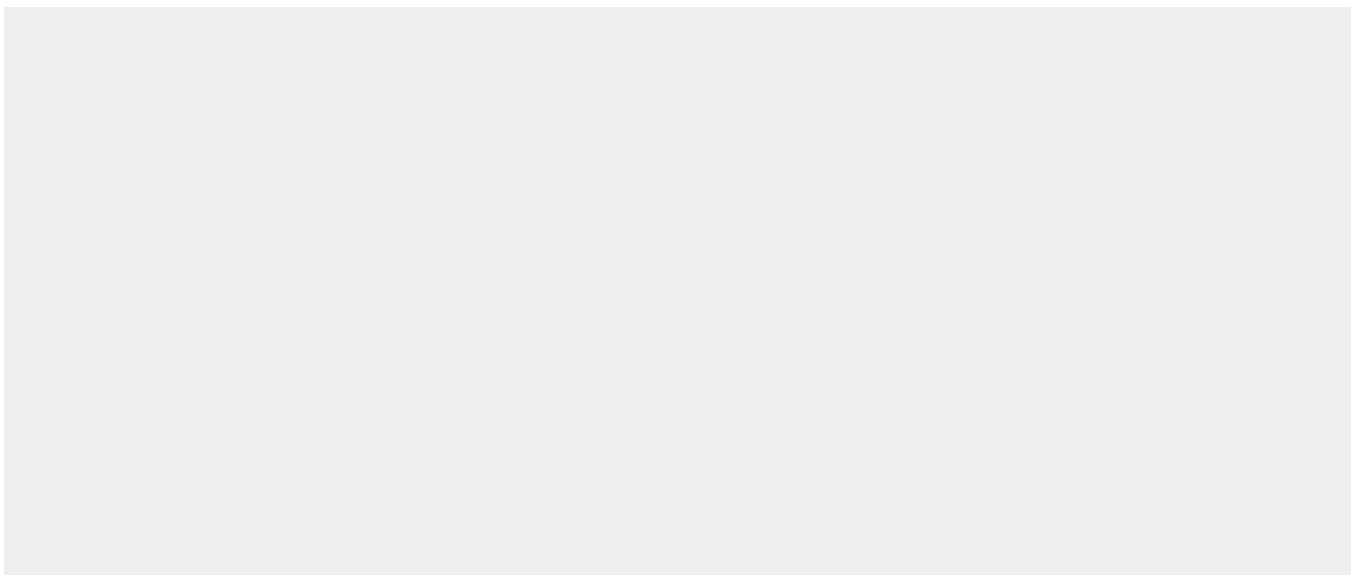
Expressed primarily in the brain and heart, with low expression in the kidney, pancreas and muscle

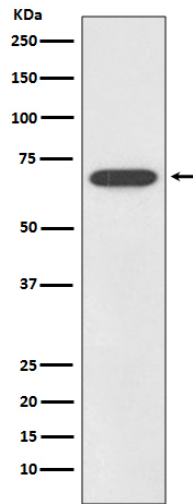
Anti-SOX11 Rabbit Monoclonal Antibody - Protocols

Provided below are standard protocols that you may find useful for product applications.

- [Western Blot](#)
- [Blocking Peptides](#)
- [Dot Blot](#)
- [Immunohistochemistry](#)
- [Immunofluorescence](#)
- [Immunoprecipitation](#)
- [Flow Cytometry](#)
- [Cell Culture](#)

Anti-SOX11 Rabbit Monoclonal Antibody - Images





Western blot analysis of SOX11 expression in SHSY5Y cell lysate.