

## Anti-IL1RA Rabbit Monoclonal Antibody Catalog # ABO13680

### Specification

---

#### Anti-IL1RA Rabbit Monoclonal Antibody - Product Information

Application	WB, IHC, IF, ICC, IP, FC
Primary Accession	<a href="#">P18510</a>
Host	Rabbit
Isotype	Rabbit IgG
Reactivity	Rat, Human, Mouse
Clonality	Monoclonal
Format	Liquid

#### Description

Anti-IL1RA Rabbit Monoclonal Antibody . Tested in WB, IHC, ICC/IF, IP, Flow Cytometry applications. This antibody reacts with Human, Mouse, Rat.

#### Anti-IL1RA Rabbit Monoclonal Antibody - Additional Information

**Gene ID** 3557

#### Other Names

Interleukin-1 receptor antagonist protein, IL-1RN, IL-1ra, IRAP, ICIL-1RA, IL1 inhibitor, Anakinra, IL1RN, IL1F3, IL1RA

#### Calculated MW

20055 MW KDa

#### Application Details

WB 1:5000-1:20000<br>IHC 1:50-1:200<br>ICC/IF 1:50-1:200<br>FC 1:50<br>IP 1:50

#### Subcellular Localization

Isoform 1: Secreted.

#### Tissue Specificity

The intracellular form of IL1RN is predominantly expressed in epithelial cells.

#### Contents

Rabbit IgG in phosphate buffered saline, pH 7.4, 150mM NaCl, 0.02% sodium azide and 50% glycerol, 0.4-0.5mg/ml BSA.

#### Immunogen

A synthesized peptide derived from human IL1RA

#### Purification

Affinity-chromatography

Storage

**Store at -20°C for one year. For short term storage and frequent use, store at 4°C for up to one month. Avoid repeated**

freeze-thaw cycles.

## Anti-IL1RA Rabbit Monoclonal Antibody - Protein Information

**Name** IL1RN

**Synonyms** IL1F3, IL1RA

### Function

Anti-inflammatory antagonist of interleukin-1 family of proinflammatory cytokines such as interleukin-1beta/IL1B and interleukin-1alpha/IL1A. Protects from immune dysregulation and uncontrolled systemic inflammation triggered by IL1 for a range of innate stimulatory agents such as pathogens.

### Cellular Location

[Isoform 1]: Secreted [Isoform 3]: Cytoplasm.

### Tissue Location

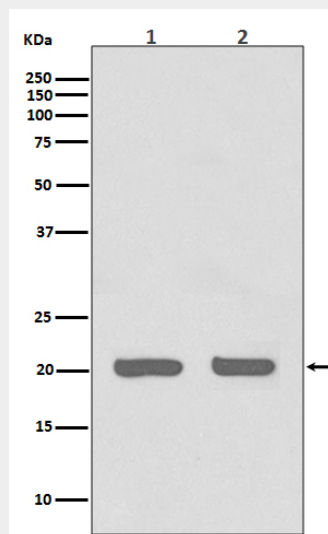
The intracellular form of IL1RN is predominantly expressed in epithelial cells

## Anti-IL1RA Rabbit Monoclonal Antibody - Protocols

Provided below are standard protocols that you may find useful for product applications.

- [Western Blot](#)
- [Blocking Peptides](#)
- [Dot Blot](#)
- [Immunohistochemistry](#)
- [Immunofluorescence](#)
- [Immunoprecipitation](#)
- [Flow Cytometry](#)
- [Cell Culture](#)

## Anti-IL1RA Rabbit Monoclonal Antibody - Images



Western blot analysis of IL1RA expression in (1) HeLa cell lysate; (2) 3T3 cell lysate.