

Anti-MMP11 Rabbit Monoclonal Antibody Catalog # ABO13679

Specification

Anti-MMP11 Rabbit Monoclonal Antibody - Product Information

Application	WB, IHC, IF, ICC
Primary Accession	P24347
Host	Rabbit
Isotype	Rabbit IgG
Reactivity	Rat, Human, Mouse
Clonality	Monoclonal
Format	Liquid

Description

Anti-MMP11 Rabbit Monoclonal Antibody . Tested in WB, IHC, ICC/IF applications. This antibody reacts with Human, Mouse, Rat.

Anti-MMP11 Rabbit Monoclonal Antibody - Additional Information

Gene ID 4320

Other Names

Stromelysin-3, SL-3, ST3, 3.4.24.-, Matrix metalloproteinase-11, MMP-11, MMP11, STMY3

Calculated MW

54590 MW KDa

Application Details

WB 1:500-1:1000
IHC 1:50-1:200
ICC/IF 1:50-1:200

Subcellular Localization

Secreted, extracellular space, extracellular matrix.

Tissue Specificity

Specifically expressed in stromal cells of breast carcinomas.

Contents

Rabbit IgG in phosphate buffered saline, pH 7.4, 150mM NaCl, 0.02% sodium azide and 50% glycerol, 0.4-0.5mg/ml BSA.

Immunogen

A synthesized peptide derived from human MMP11

Purification

Affinity-chromatography

Storage

Store at -20°C for one year. For short term storage and frequent use, store at 4°C for up to one month. Avoid repeated freeze-thaw cycles.

Anti-MMP11 Rabbit Monoclonal Antibody - Protein Information

Name MMP11

Synonyms STMY3

Function

May play an important role in the progression of epithelial malignancies.

Cellular Location

Secreted, extracellular space, extracellular matrix

Tissue Location

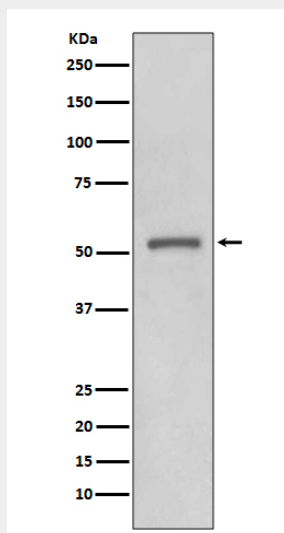
Specifically expressed in stromal cells of breast carcinomas

Anti-MMP11 Rabbit Monoclonal Antibody - Protocols

Provided below are standard protocols that you may find useful for product applications.

- [Western Blot](#)
- [Blocking Peptides](#)
- [Dot Blot](#)
- [Immunohistochemistry](#)
- [Immunofluorescence](#)
- [Immunoprecipitation](#)
- [Flow Cytometry](#)
- [Cell Culture](#)

Anti-MMP11 Rabbit Monoclonal Antibody - Images



Western blot analysis of MMP11 expression in MCF-7 cell lysate.