

**Anti-ABCF1 Rabbit Monoclonal Antibody**  
Catalog # ABO13669**Specification**

---

**Anti-ABCF1 Rabbit Monoclonal Antibody - Product Information**

Application	WB, IHC, IF, ICC
Primary Accession	<a href="#">Q8NE71</a>
Host	Rabbit
Isotype	Rabbit IgG
Reactivity	Rat, Human
Clonality	Monoclonal
Format	Liquid

**Description**

Anti-ABCF1 Rabbit Monoclonal Antibody . Tested in WB, IHC, ICC/IF applications. This antibody reacts with Human, Rat.

**Anti-ABCF1 Rabbit Monoclonal Antibody - Additional Information****Gene ID 23****Other Names**

ATP-binding cassette sub-family F member 1, ATP-binding cassette 50, TNF-alpha-stimulated ABC protein, ABCF1, ABC50

**Calculated MW**

95926 MW KDa

**Application Details**

WB 1:500-1:2000<br>IHC 1:50-1:100<br>ICC/IF 1:50-1:100

**Subcellular Localization**

Isoform 2: Cytoplasm. Nucleus, nucleoplasm. Nucleus envelope.

**Tissue Specificity**

Ubiquitous..

**Contents**

Rabbit IgG in phosphate buffered saline, pH 7.4, 150mM NaCl, 0.02% sodium azide and 50% glycerol, 0.4-0.5mg/ml BSA.

**Immunogen**

A synthesized peptide derived from human ABCF1

**Purification**

Affinity-chromatography

**Storage**

**Store at -20°C for one year. For short term storage and frequent use, store at 4°C for up to one month. Avoid repeated**

freeze-thaw cycles.

## Anti-ABCF1 Rabbit Monoclonal Antibody - Protein Information

**Name** ABCF1

**Synonyms** ABC50

### Function

Isoform 2 is required for efficient Cap- and IRES-mediated mRNA translation initiation. Isoform 2 is not involved in the ribosome biogenesis.

### Cellular Location

[Isoform 2]: Cytoplasm. Nucleus, nucleoplasm. Nucleus envelope

### Tissue Location

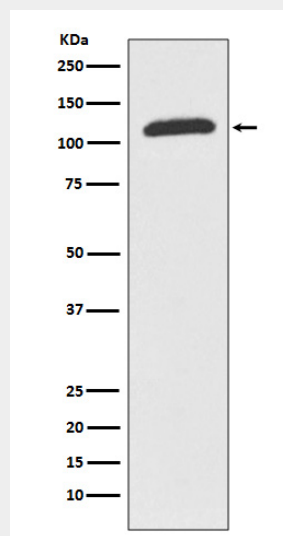
Ubiquitous..

## Anti-ABCF1 Rabbit Monoclonal Antibody - Protocols

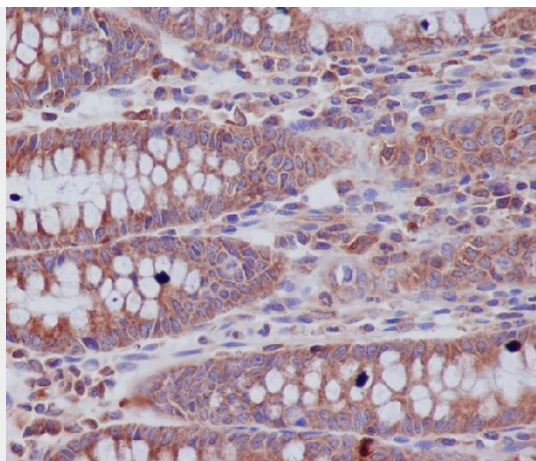
Provided below are standard protocols that you may find useful for product applications.

- [Western Blot](#)
- [Blocking Peptides](#)
- [Dot Blot](#)
- [Immunohistochemistry](#)
- [Immunofluorescence](#)
- [Immunoprecipitation](#)
- [Flow Cytometry](#)
- [Cell Culture](#)

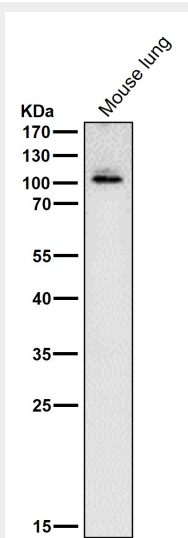
## Anti-ABCF1 Rabbit Monoclonal Antibody - Images



Western blot analysis of ABCF1 expression in K562 cell lysate.



Immunohistochemical analysis of paraffin-embedded human colon, using ABCF1 Antibody.



All lanes use the Antibody at 1:2W dilution for 1 hour at room temperature.