

Anti-CD168 HMMR Rabbit Monoclonal Antibody Catalog # ABO13665

Specification

Anti-CD168 HMMR Rabbit Monoclonal Antibody - Product Information

Application	WB, IHC, IP
Primary Accession	O75330
Host	Rabbit
Isotype	Rabbit IgG
Reactivity	Rat, Human, Mouse
Clonality	Monoclonal
Format	Liquid

Description

Anti-CD168 HMMR Rabbit Monoclonal Antibody . Tested in WB, IHC, IP applications. This antibody reacts with Human, Mouse, Rat.

Anti-CD168 HMMR Rabbit Monoclonal Antibody - Additional Information

Gene ID 3161

Other Names

Hyaluronan mediated motility receptor, Intracellular hyaluronic acid-binding protein, Receptor for hyaluronan-mediated motility, CD168, HMMR, IHABP, RHAMM

Calculated MW

84100 MW KDa

Application Details

WB 1:500-1:2000
IHC 1:50-1:200
IP 1:50

Subcellular Localization

Cell surface. Cytoplasm.

Contents

Rabbit IgG in phosphate buffered saline, pH 7.4, 150mM NaCl, 0.02% sodium azide and 50% glycerol, 0.4-0.5mg/ml BSA.

Immunogen

A synthesized peptide derived from human CD168

Purification

Affinity-chromatography

Storage

Store at -20°C for one year. For short term storage and frequent use, store at 4°C for up to one month. Avoid repeated freeze-thaw cycles.

Anti-CD168 HMMR Rabbit Monoclonal Antibody - Protein Information

Name HMMR

Synonyms IHABP, RHAMM

Function

Receptor for hyaluronic acid (HA) (By similarity). Involved in cell motility (By similarity). When hyaluronan binds to HMMR, the phosphorylation of a number of proteins, including PTK2/FAK1 occurs. May also be involved in cellular transformation and metastasis formation, and in regulating extracellular-regulated kinase (ERK) activity. May act as a regulator of adipogenesis (By similarity).

Cellular Location

Cell surface {ECO:0000250|UniProtKB:Q00547}. Cytoplasm {ECO:0000250|UniProtKB:Q00547}. Cytoplasm, cytoskeleton, spindle {ECO:0000250|UniProtKB:Q00547}

Tissue Location

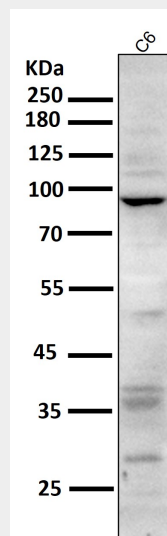
Expressed in testis (PubMed:22965910). Expressed in the breast (PubMed:8890751).

Anti-CD168 HMMR Rabbit Monoclonal Antibody - Protocols

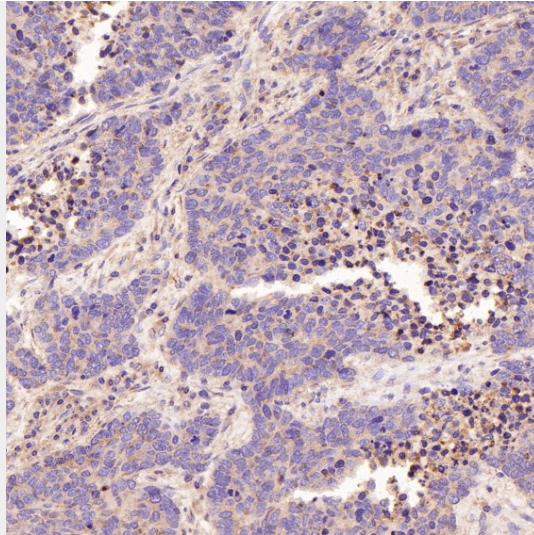
Provided below are standard protocols that you may find useful for product applications.

- [Western Blot](#)
- [Blocking Peptides](#)
- [Dot Blot](#)
- [Immunohistochemistry](#)
- [Immunofluorescence](#)
- [Immunoprecipitation](#)
- [Flow Cytometry](#)
- [Cell Culture](#)

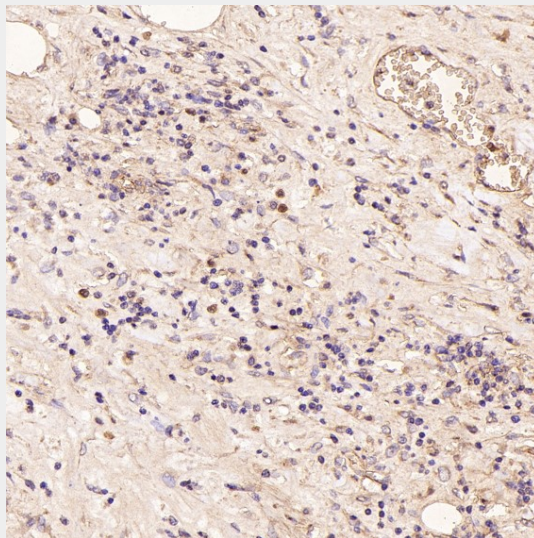
Anti-CD168 HMMR Rabbit Monoclonal Antibody - Images



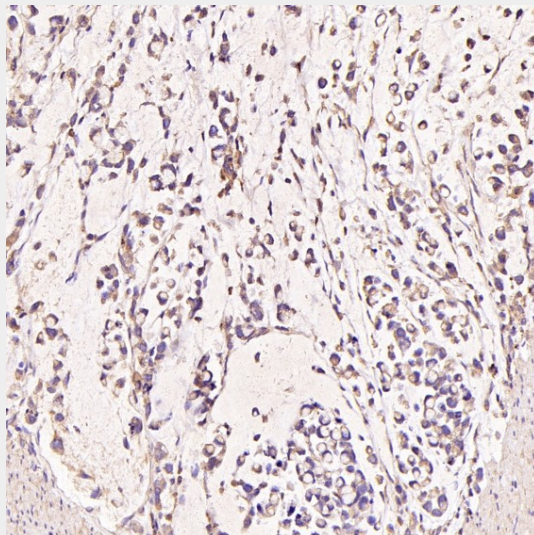
All lanes use the Antibody at 1:1K dilution for 1 hour at room temperature.



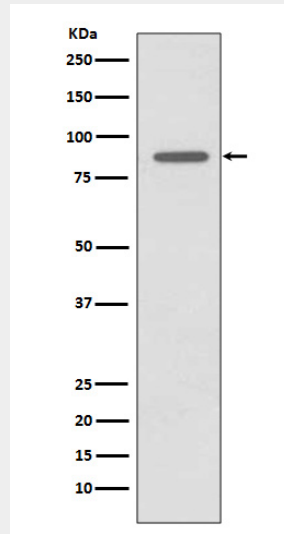
Immunohistochemical analysis of paraffin-embedded Human lung large cell cancer, using the Antibody at 1:50 dilution.



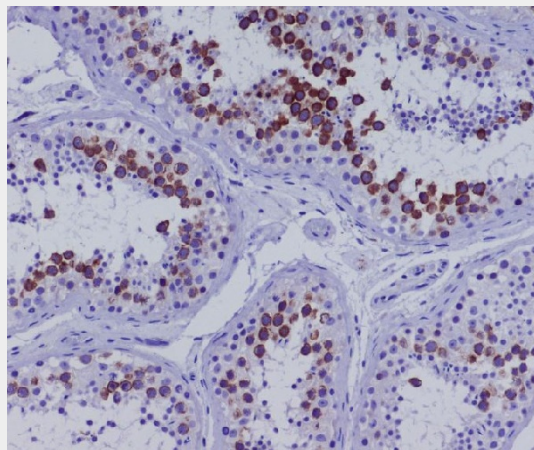
Immunohistochemical analysis of paraffin-embedded Human Hodgkin's lymphoma, using the Antibody at 1:50 dilution.



Immunohistochemical analysis of paraffin-embedded Human stomach cancer, using the Antibody at 1:50 dilution.



Western blot analysis of CD168 expression in LnCaP cell lysate.



Immunohistochemical analysis of paraffin-embedded human testis, using CD168 Antibody.