

Anti-PEBP1/Pbp Rabbit Monoclonal Antibody
Catalog # ABO13656**Specification****Anti-PEBP1/Pbp Rabbit Monoclonal Antibody - Product Information**

Application	WB, IHC, IF, ICC, IP
Primary Accession	P30086
Host	Rabbit
Isotype	Rabbit IgG
Reactivity	Rat, Human, Mouse
Clonality	Monoclonal
Format	Liquid

Description

Anti-PEBP1/Pbp Rabbit Monoclonal Antibody . Tested in WB, IHC, ICC/IF, IP applications. This antibody reacts with Human, Mouse, Rat.

Anti-PEBP1/Pbp Rabbit Monoclonal Antibody - Additional Information

Gene ID 5037

Other Names

Phosphatidylethanolamine-binding protein 1, PEBP-1, HCNPpp, Neuropolypeptide h3, Prostatic-binding protein, Raf kinase inhibitor protein, RKIP, Hippocampal cholinergic neurostimulating peptide, HCNP, PEBP1, PBP, PEBP

Calculated MW

21057 MW KDa

Application Details

WB 1:500-1:2000
IHC 1:50-1:200
ICC/IF 1:50-1:200
IP 1:20

Subcellular Localization

Cytoplasm.

Contents

Rabbit IgG in phosphate buffered saline, pH 7.4, 150mM NaCl, 0.02% sodium azide and 50% glycerol, 0.4-0.5mg/ml BSA.

Immunogen

A synthesized peptide derived from human PEBP1

Purification

Affinity-chromatography

Storage

Store at -20°C for one year. For short term storage and frequent use, store at 4°C for up to one month. Avoid repeated freeze-thaw cycles.

Anti-PEBP1/Pbp Rabbit Monoclonal Antibody - Protein Information

Name PEBP1

Synonyms PBP, PEBP

Function

Binds ATP, opioids and phosphatidylethanolamine. Has lower affinity for phosphatidylinositol and phosphatidylcholine. Serine protease inhibitor which inhibits thrombin, neuropsin and chymotrypsin but not trypsin, tissue type plasminogen activator and elastase (By similarity). Inhibits the kinase activity of RAF1 by inhibiting its activation and by dissociating the RAF1/MEK complex and acting as a competitive inhibitor of MEK phosphorylation.

Cellular Location

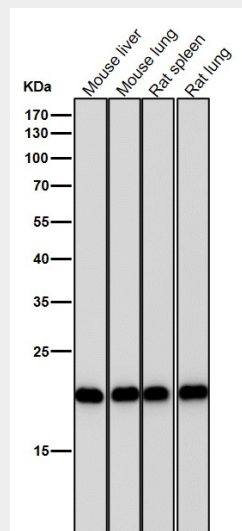
Cytoplasm.

Anti-PEBP1/Pbp Rabbit Monoclonal Antibody - Protocols

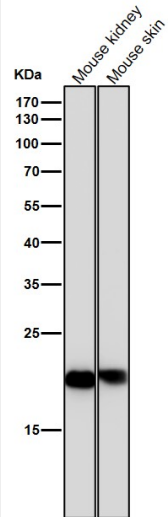
Provided below are standard protocols that you may find useful for product applications.

- [Western Blot](#)
- [Blocking Peptides](#)
- [Dot Blot](#)
- [Immunohistochemistry](#)
- [Immunofluorescence](#)
- [Immunoprecipitation](#)
- [Flow Cytometry](#)
- [Cell Culture](#)

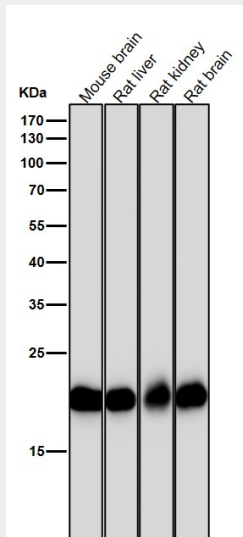
Anti-PEBP1/Pbp Rabbit Monoclonal Antibody - Images



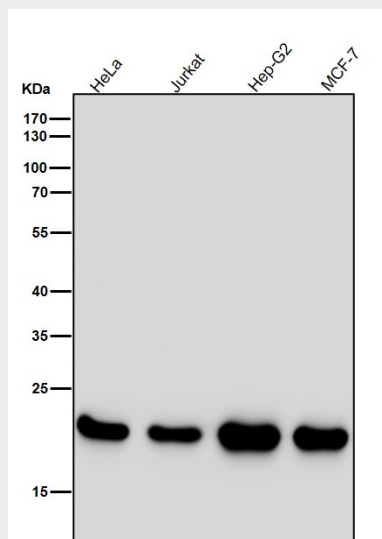
All lanes use the Antibody at 1:5K dilution for 1 hour at room temperature.



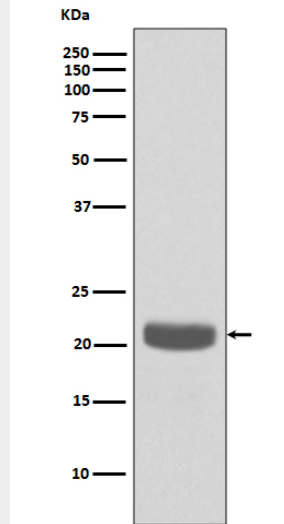
All lanes use the Antibody at 1:5K dilution for 1 hour at room temperature.



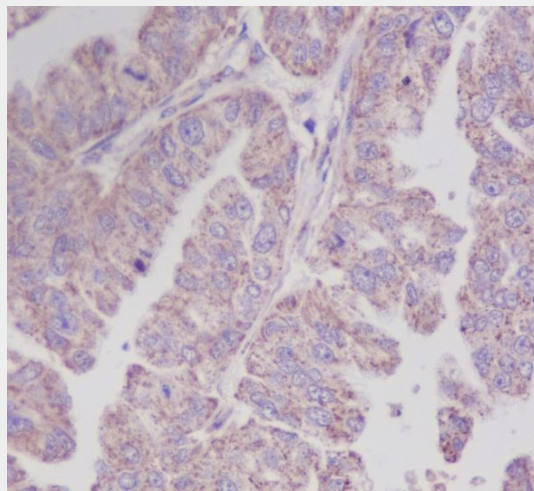
All lanes use the Antibody at 1:5K dilution for 1 hour at room temperature.



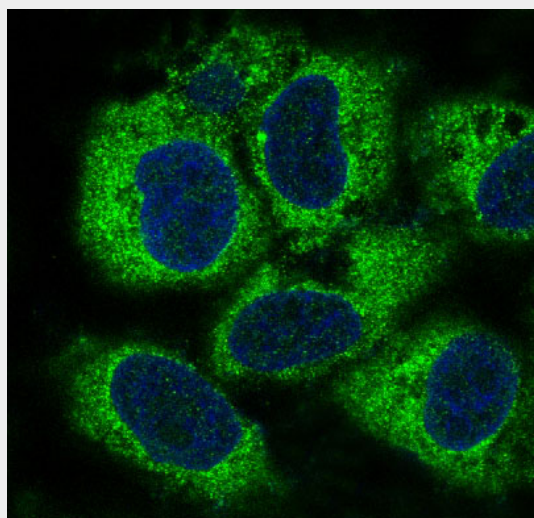
All lanes use the Antibody at 1:5K dilution for 1 hour at room temperature.



Western blot analysis of PEBP1 expression in A549 cell lysate.



Immunohistochemical analysis of paraffin-embedded human liver, using PEBP1 Antibody.



Immunofluorescent analysis of HeLa cells, using PEBP1 Antibody.