

Anti-CD11a ITGAL Rabbit Monoclonal Antibody
Catalog # ABO13652

Specification

Anti-CD11a ITGAL Rabbit Monoclonal Antibody - Product Information

Application	WB, IHC, IF, ICC, IP, FC
Primary Accession	P20701
Host	Rabbit
Isotype	Rabbit IgG
Reactivity	Human
Clonality	Monoclonal
Format	Liquid

Description

Anti-CD11a ITGAL Rabbit Monoclonal Antibody . Tested in WB, IHC, ICC/IF, IP, Flow Cytometry applications. This antibody reacts with Human.

Anti-CD11a ITGAL Rabbit Monoclonal Antibody - Additional Information

Gene ID 3683

Other Names

Integrin alpha-L, CD11 antigen-like family member A, Leukocyte adhesion glycoprotein LFA-1 alpha chain, LFA-1A, Leukocyte function-associated molecule 1 alpha chain, CD11a, ITGAL (http://www.genenames.org/cgi-bin/gene_symbol_report?hgnc_id=6148), CD11A

Calculated MW

128770 MW KDa

Application Details

WB 1:1000-1:2000
IHC 1:50-1:200
ICC/IF 1:50-1:100
IP 1:50
FC 1:50

Subcellular Localization

Membrane; Single-pass type I membrane protein.

Tissue Specificity

Leukocytes.

Contents

Rabbit IgG in phosphate buffered saline, pH 7.4, 150mM NaCl, 0.02% sodium azide and 50% glycerol, 0.4-0.5mg/ml BSA.

Immunogen

A synthesized peptide derived from human CD11a

Purification

Affinity-chromatography

Storage

Store at -20°C for one year. For short term

storage and frequent use, store at 4°C for up to one month. Avoid repeated freeze-thaw cycles.

Anti-CD11a ITGAL Rabbit Monoclonal Antibody - Protein Information

Name ITGAL ([HGNC:6148](#))

Synonyms CD11A

Function

Integrin ITGAL/ITGB2 is a receptor for ICAM1, ICAM2, ICAM3 and ICAM4. Integrin ITGAL/ITGB2 is a receptor for F11R (PubMed:[11812992](http://www.uniprot.org/citations/11812992)), PubMed:[15528364](http://www.uniprot.org/citations/15528364)). Integrin ITGAL/ITGB2 is a receptor for the secreted form of ubiquitin-like protein ISG15; the interaction is mediated by ITGAL (PubMed:[29100055](http://www.uniprot.org/citations/29100055)). Involved in a variety of immune phenomena including leukocyte-endothelial cell interaction, cytotoxic T-cell mediated killing, and antibody dependent killing by granulocytes and monocytes. Contributes to natural killer cell cytotoxicity (PubMed:[15356110](http://www.uniprot.org/citations/15356110)). Involved in leukocyte adhesion and transmigration of leukocytes including T-cells and neutrophils (PubMed:[11812992](http://www.uniprot.org/citations/11812992)). Required for generation of common lymphoid progenitor cells in bone marrow, indicating a role in lymphopoiesis (By similarity). Integrin ITGAL/ITGB2 in association with ICAM3, contributes to apoptotic neutrophil phagocytosis by macrophages (PubMed:[23775590](http://www.uniprot.org/citations/23775590)).

Cellular Location

Cell membrane; Single-pass type I membrane protein

Tissue Location

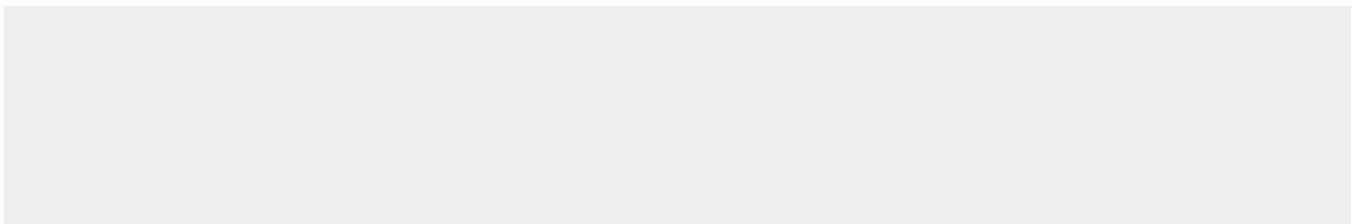
Leukocytes.

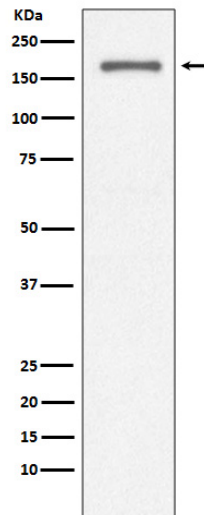
Anti-CD11a ITGAL Rabbit Monoclonal Antibody - Protocols

Provided below are standard protocols that you may find useful for product applications.

- [Western Blot](#)
- [Blocking Peptides](#)
- [Dot Blot](#)
- [Immunohistochemistry](#)
- [Immunofluorescence](#)
- [Immunoprecipitation](#)
- [Flow Cytometry](#)
- [Cell Culture](#)

Anti-CD11a ITGAL Rabbit Monoclonal Antibody - Images





Western blot analysis of CD11a expression in Jurkat cell lysate.