

Anti-Alas1/Alas H Rabbit Monoclonal Antibody
Catalog # ABO13645**Specification****Anti-Alas1/Alas H Rabbit Monoclonal Antibody - Product Information**

Application	WB, IF, ICC
Primary Accession	P13196
Host	Rabbit
Isotype	Rabbit IgG
Reactivity	Human
Clonality	Monoclonal
Format	Liquid

Description

Anti-Alas1/Alas H Rabbit Monoclonal Antibody . Tested in WB, ICC/IF applications. This antibody reacts with Human.

Anti-Alas1/Alas H Rabbit Monoclonal Antibody - Additional Information

Gene ID 211

Other Names

5-aminolevulinate synthase, non-specific, mitochondrial, ALAS-H, 2.3.1.37, 5-aminolevulinic acid synthase 1, Delta-ALA synthase 1, Delta-aminolevulinate synthase 1, ALAS1, ALAS3, ALASH

Calculated MW

70581 MW KDa

Application Details

WB 1:500-1:2000
ICC/IF 1:50-1:200

Subcellular Localization

Mitochondrion matrix.

Contents

Rabbit IgG in phosphate buffered saline, pH 7.4, 150mM NaCl, 0.02% sodium azide and 50% glycerol, 0.4-0.5mg/ml BSA.

Immunogen

A synthesized peptide derived from human Alas1

Purification

Affinity-chromatography

Storage

Store at -20°C for one year. For short term storage and frequent use, store at 4°C for up to one month. Avoid repeated freeze-thaw cycles.

Anti-Alas1/Alas H Rabbit Monoclonal Antibody - Protein Information

Name ALAS1

Synonyms ALAS3, ALASH

Function

Catalyzes the pyridoxal 5'-phosphate (PLP)-dependent condensation of succinyl-CoA and glycine to form aminolevulinic acid (ALA), with CoA and CO₂ as by-products.

Cellular Location

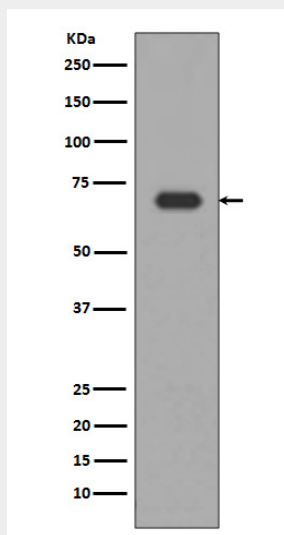
Mitochondrion inner membrane {ECO:0000250|UniProtKB:P22557}; Peripheral membrane protein {ECO:0000250|UniProtKB:P22557}. Note=Localizes to the matrix side of the mitochondrion inner membrane. {ECO:0000250|UniProtKB:P22557}

Anti-Alas1/Alas H Rabbit Monoclonal Antibody - Protocols

Provided below are standard protocols that you may find useful for product applications.

- [Western Blot](#)
- [Blocking Peptides](#)
- [Dot Blot](#)
- [Immunohistochemistry](#)
- [Immunofluorescence](#)
- [Immunoprecipitation](#)
- [Flow Cytometry](#)
- [Cell Culture](#)

Anti-Alas1/Alas H Rabbit Monoclonal Antibody - Images



Western blot analysis of Alas1 expression in HepG2 cell lysate.