

Anti-DUSP6/Mkp 3 Rabbit Monoclonal Antibody Catalog # ABO13636

Specification

Anti-DUSP6/Mkp 3 Rabbit Monoclonal Antibody - Product Information

Application	WB, IHC, IF, ICC, IP, FC
Primary Accession	Q16828
Host	Rabbit
Isotype	Rabbit IgG
Reactivity	Rat, Human, Mouse
Clonality	Monoclonal
Format	Liquid

Description

Anti-DUSP6/Mkp 3 Rabbit Monoclonal Antibody . Tested in WB, IHC, ICC/IF, IP, Flow Cytometry applications. This antibody reacts with Human, Mouse, Rat.

Anti-DUSP6/Mkp 3 Rabbit Monoclonal Antibody - Additional Information

Gene ID 1848

Other Names

Dual specificity protein phosphatase 6, 3.1.3.16, 3.1.3.48, Dual specificity protein phosphatase PYST1, Mitogen-activated protein kinase phosphatase 3, MAP kinase phosphatase 3, MKP-3, DUSP6, MKP3, PYST1

Calculated MW

42320 MW KDa

Application Details

WB 1:500-1:2000
IHC 1:50-1:200
ICC/IF 1:50-1:200
IP 1:50
FC 1:50

Subcellular Localization

Cytoplasm.

Contents

Rabbit IgG in phosphate buffered saline, pH 7.4, 150mM NaCl, 0.02% sodium azide and 50% glycerol, 0.4-0.5mg/ml BSA.

Immunogen

A synthesized peptide derived from human DUSP6

Purification

Affinity-chromatography

Storage

Store at -20°C for one year. For short term storage and frequent use, store at 4°C for up to one month. Avoid repeated freeze-thaw cycles.

Anti-DUSP6/Mkp 3 Rabbit Monoclonal Antibody - Protein Information

Name DUSP6

Synonyms MKP3, PYST1

Function

Inactivates MAP kinases. Has a specificity for the ERK family (PubMed:9858808). Plays an important role in alleviating chronic postoperative pain. Necessary for the normal dephosphorylation of the long-lasting phosphorylated forms of spinal MAPK1/3 and MAP kinase p38 induced by peripheral surgery, which drives the resolution of acute postoperative allodynia (By similarity). Also important for dephosphorylation of MAPK1/3 in local wound tissue, which further contributes to resolution of acute pain (By similarity). Promotes cell differentiation by regulating MAPK1/MAPK3 activity and regulating the expression of AP1 transcription factors (PubMed:29043977).

Cellular Location

Cytoplasm.

Tissue Location

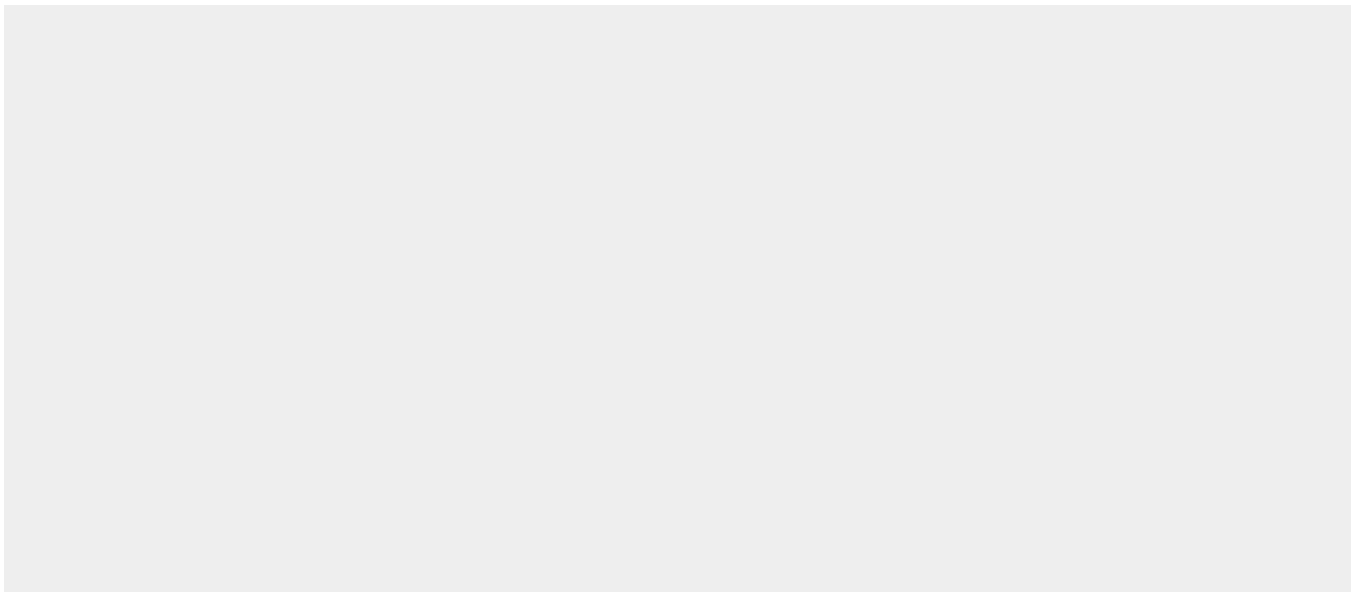
Expressed in keratinocytes (at protein level).

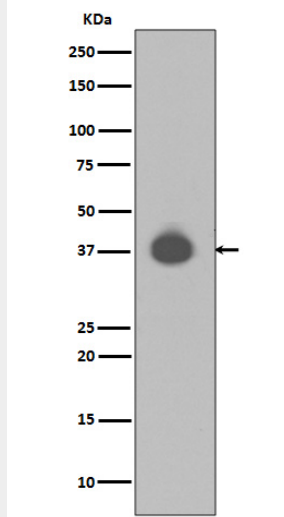
Anti-DUSP6/Mkp 3 Rabbit Monoclonal Antibody - Protocols

Provided below are standard protocols that you may find useful for product applications.

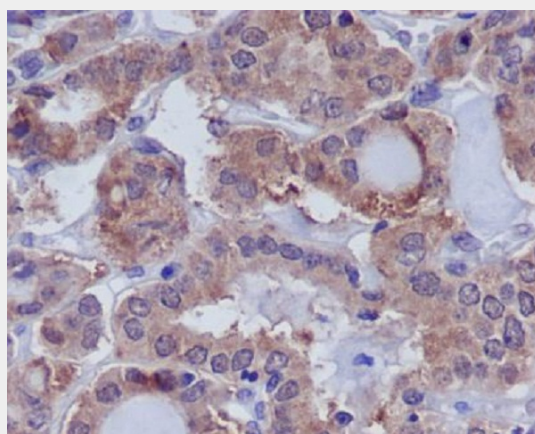
- [Western Blot](#)
- [Blocking Peptides](#)
- [Dot Blot](#)
- [Immunohistochemistry](#)
- [Immunofluorescence](#)
- [Immunoprecipitation](#)
- [Flow Cytometry](#)
- [Cell Culture](#)

Anti-DUSP6/Mkp 3 Rabbit Monoclonal Antibody - Images

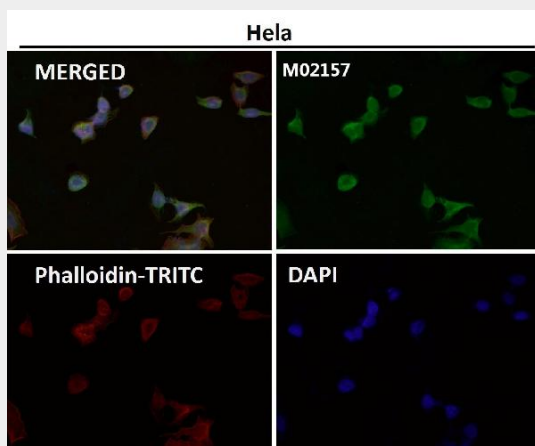




Western blot analysis of DUSP6 expression in NIH/3T3 cell lysate.



Immunohistochemical analysis of paraffin-embedded human thyroid, using DUSP6 Antibody.



Immunofluorescent analysis using the Antibody at 1:50 dilution.

