

Anti-ICAM1/Cd54 Rabbit Monoclonal Antibody Catalog # ABO13631

Specification

Anti-ICAM1/Cd54 Rabbit Monoclonal Antibody - Product Information

Application	WB, IHC, IF, ICC, FC
Primary Accession	P05362
Host	Rabbit
Isotype	Rabbit IgG
Reactivity	Human
Clonality	Monoclonal
Format	Liquid

Description

Anti-ICAM1/Cd54 Rabbit Monoclonal Antibody . Tested in WB, IHC, ICC/IF, Flow Cytometry applications. This antibody reacts with Human.

Anti-ICAM1/Cd54 Rabbit Monoclonal Antibody - Additional Information

Gene ID 3383

Other Names

Intercellular adhesion molecule 1, ICAM-1, Major group rhinovirus receptor, CD54, ICAM1

Calculated MW

57825 MW KDa

Application Details

WB 1:500-1:2000
IHC 1:50-1:200
ICC/IF 1:50-1:200
FC 1:50

Subcellular Localization

Membrane; Single-pass type I membrane protein.

Contents

Rabbit IgG in phosphate buffered saline, pH 7.4, 150mM NaCl, 0.02% sodium azide and 50% glycerol, 0.4-0.5mg/ml BSA.

Immunogen

A synthesized peptide derived from human ICAM1

Purification

Affinity-chromatography

Storage

Store at -20°C for one year. For short term storage and frequent use, store at 4°C for up to one month. Avoid repeated freeze-thaw cycles.

Anti-ICAM1/Cd54 Rabbit Monoclonal Antibody - Protein Information

Name ICAM1

Function

ICAM proteins are ligands for the leukocyte adhesion protein LFA-1 (integrin alpha-L/beta-2). During leukocyte trans-endothelial migration, ICAM1 engagement promotes the assembly of endothelial apical cups through ARHGEF26/SGEF and RHOG activation.

Cellular Location

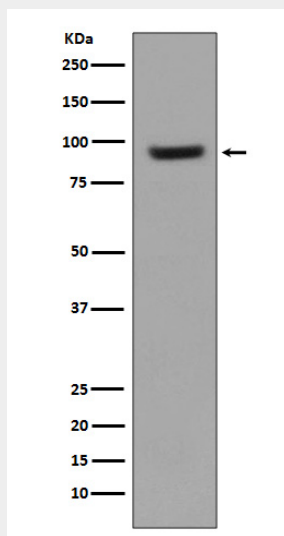
Membrane; Single-pass type I membrane protein.

Anti-ICAM1/Cd54 Rabbit Monoclonal Antibody - Protocols

Provided below are standard protocols that you may find useful for product applications.

- [Western Blot](#)
- [Blocking Peptides](#)
- [Dot Blot](#)
- [Immunohistochemistry](#)
- [Immunofluorescence](#)
- [Immunoprecipitation](#)
- [Flow Cytometry](#)
- [Cell Culture](#)

Anti-ICAM1/Cd54 Rabbit Monoclonal Antibody - Images



Western blot analysis of ICAM1 expression in Raji cell lysate.