

## Anti-EpCAM/Trop1 Rabbit Monoclonal Antibody Catalog # ABO13630

### Specification

---

#### Anti-EpCAM/Trop1 Rabbit Monoclonal Antibody - Product Information

Application	WB
Primary Accession	<a href="#">P16422</a>
Host	Rabbit
Isotype	Rabbit IgG
Reactivity	Rat, Human, Mouse
Clonality	Monoclonal
Format	Liquid

#### Description

Anti-EpCAM/Trop1 Rabbit Monoclonal Antibody . Tested in WB application. This antibody reacts with Human, Mouse, Rat.

#### Anti-EpCAM/Trop1 Rabbit Monoclonal Antibody - Additional Information

Gene ID 4072

#### Other Names

Epithelial cell adhesion molecule, Ep-CAM, Adenocarcinoma-associated antigen, Cell surface glycoprotein Trop-1, Epithelial cell surface antigen, Epithelial glycoprotein, EGP, Epithelial glycoprotein 314, EGP314, hEGP314, KS 1/4 antigen, KSA, Major gastrointestinal tumor-associated protein GA733-2, Tumor-associated calcium signal transducer 1, CD326, EPCAM, GA733-2, M1S2, M4S1, MIC18, TACSTD1, TROP1

#### Calculated MW

34932 MW KDa

#### Application Details

WB 1:1000-1:2000

#### Subcellular Localization

Lateral cell membrane ; Single-pass type I membrane protein. Cell junction, tight junction. Colocalizes with CLDN7 at the lateral cell membrane and tight junction..

#### Tissue Specificity

Highly and selectively expressed by undifferentiated rather than differentiated embryonic stem cells (ESC). Levels rapidly diminish as soon as ESC's differentiate (at protein levels). Expressed in almost all epithelial cell membranes but not on mesodermal or neural cell membranes. Found on the surface of adenocarcinoma..

#### Contents

Rabbit IgG in phosphate buffered saline, pH 7.4, 150mM NaCl, 0.02% sodium azide and 50% glycerol, 0.4-0.5mg/ml BSA.

#### Immunogen

A synthesized peptide derived from <https://www.bosterbio.com/anti-ep-cam-cd326-epith>

elial-marker-antibody-m30941-boster.html" style="color:#EA8D28">human EpCAM</a>

#### **Purification**

Affinity-chromatography

#### **Storage**

**Store at -20°C for one year. For short term storage and frequent use, store at 4°C for up to one month. Avoid repeated freeze-thaw cycles.**

### **Anti-EpCAM/Trop1 Rabbit Monoclonal Antibody - Protein Information**

**Name** EPCAM

**Synonyms** GA733-2, M1S2, M4S1, MIC18, TACSTD1, TRO

#### **Function**

May act as a physical homophilic interaction molecule between intestinal epithelial cells (IECs) and intraepithelial lymphocytes (IELs) at the mucosal epithelium for providing immunological barrier as a first line of defense against mucosal infection. Plays a role in embryonic stem cells proliferation and differentiation. Up-regulates the expression of FABP5, MYC and cyclins A and E.

#### **Cellular Location**

Lateral cell membrane; Single-pass type I membrane protein. Cell junction, tight junction.  
Note=Colocalizes with CLDN7 at the lateral cell membrane and tight junction

#### **Tissue Location**

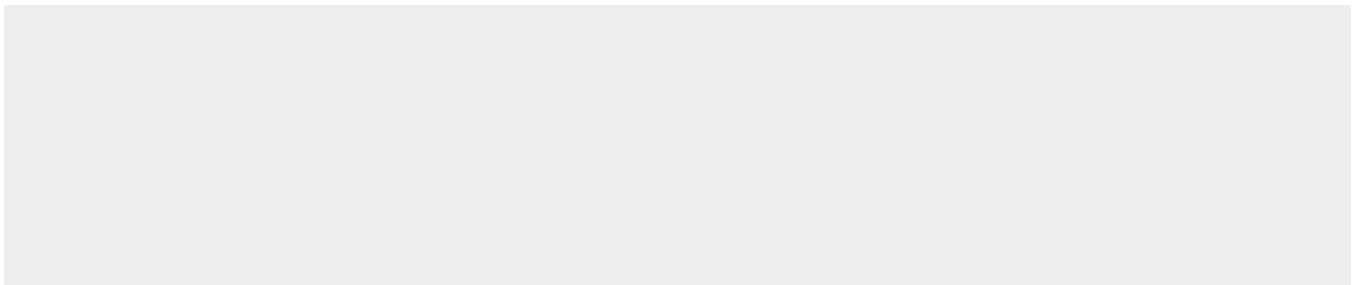
Highly and selectively expressed by undifferentiated rather than differentiated embryonic stem cells (ESC) Levels rapidly diminish as soon as ESC's differentiate (at protein levels). Expressed in almost all epithelial cell membranes but not on mesodermal or neural cell membranes. Found on the surface of adenocarcinoma.

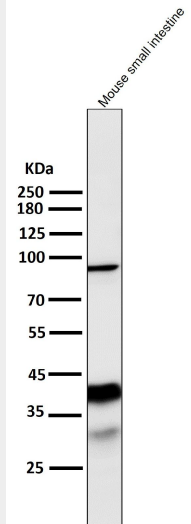
### **Anti-EpCAM/Trop1 Rabbit Monoclonal Antibody - Protocols**

Provided below are standard protocols that you may find useful for product applications.

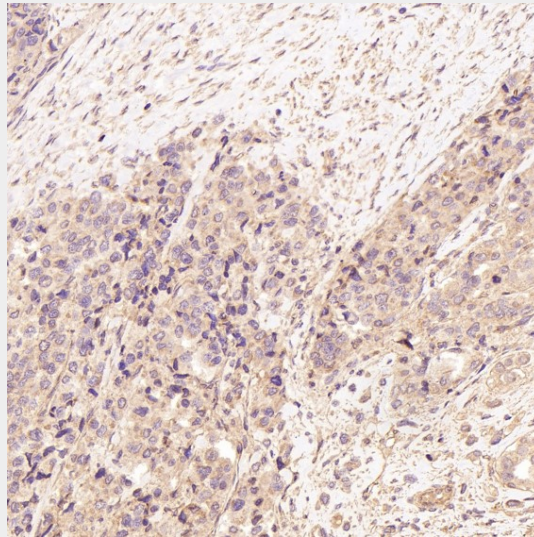
- [Western Blot](#)
- [Blocking Peptides](#)
- [Dot Blot](#)
- [Immunohistochemistry](#)
- [Immunofluorescence](#)
- [Immunoprecipitation](#)
- [Flow Cytometry](#)
- [Cell Culture](#)

### **Anti-EpCAM/Trop1 Rabbit Monoclonal Antibody - Images**

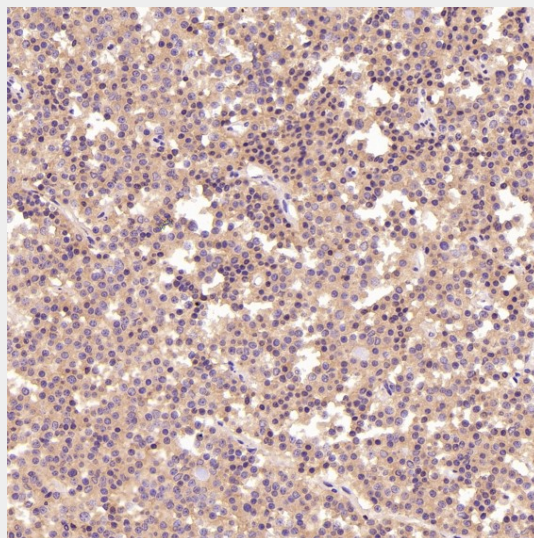




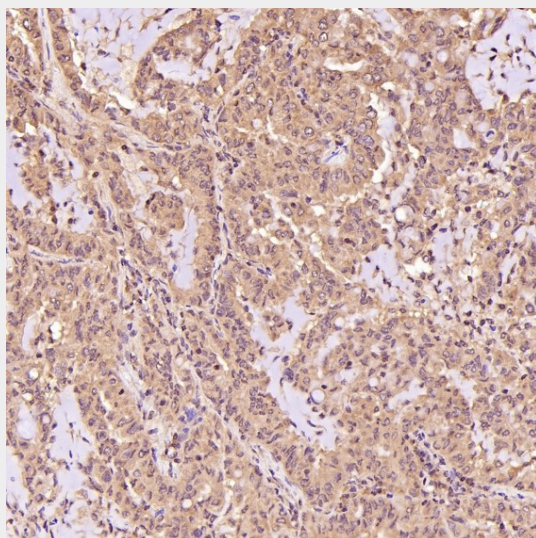
All lanes use the Antibody at 1:6K dilution for 1 hour at room temperature.



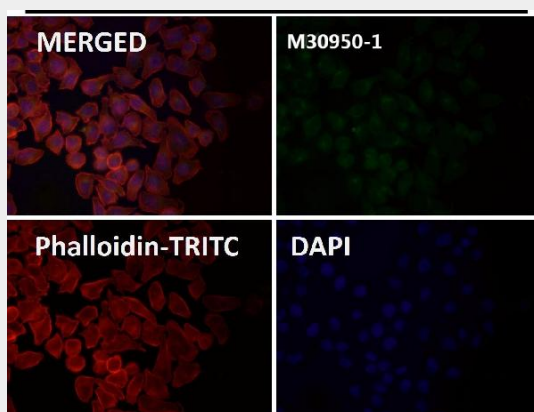
Immunohistochemical analysis of paraffin-embedded Human prostate cancer, using the Antibody at 1:50 dilution.



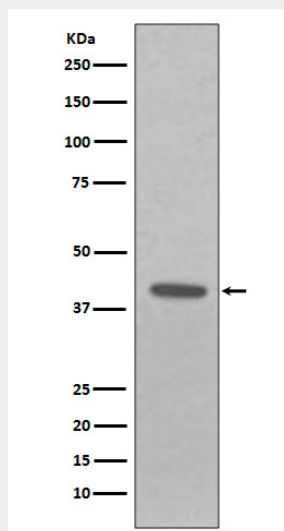
Immunohistochemical analysis of paraffin-embedded Human pituitary tumor, using the Antibody at 1:300 dilution.



Immunohistochemical analysis of paraffin-embedded Human lung adenocarcinoma, using the Antibody at 1:300 dilution.



Immunofluorescent analysis using the Antibody at 1:50 dilution.



Western blot analysis of EpCAM expression in A431 cell lysate.