

Anti-MMP12 Rabbit Monoclonal Antibody
Catalog # ABO13628

Specification

Anti-MMP12 Rabbit Monoclonal Antibody - Product Information

| | |
|-------------------|------------------------|
| Application | WB |
| Primary Accession | P39900 |
| Host | Rabbit |
| Isotype | Rabbit IgG |
| Reactivity | Human |
| Clonality | Monoclonal |
| Format | Liquid |

Description

Anti-MMP12 Rabbit Monoclonal Antibody . Tested in WB application. This antibody reacts with Human.

Anti-MMP12 Rabbit Monoclonal Antibody - Additional Information

Gene ID 4321

Other Names

Macrophage metalloelastase, MME, 3.4.24.65, Macrophage elastase, ME, hME, Matrix metalloproteinase-12, MMP-12, MMP12, HME

Calculated MW

54002 MW KDa

Application Details

WB 1:1000-1:2000

Subcellular Localization

Secreted, extracellular space, extracellular matrix.

Tissue Specificity

Found in alveolar macrophages but not in peripheral blood monocytes.

Contents

Rabbit IgG in phosphate buffered saline, pH 7.4, 150mM NaCl, 0.02% sodium azide and 50% glycerol, 0.4-0.5mg/ml BSA.

Immunogen

A synthesized peptide derived from human MMP12

Purification

Affinity-chromatography

Storage

Store at -20°C for one year. For short term storage and frequent use, store at 4°C for up to one month. Avoid repeated

freeze-thaw cycles.

Anti-MMP12 Rabbit Monoclonal Antibody - Protein Information

Name MMP12

Synonyms HME

Function

May be involved in tissue injury and remodeling. Has significant elastolytic activity. Can accept large and small amino acids at the P1' site, but has a preference for leucine. Aromatic or hydrophobic residues are preferred at the P1 site, with small hydrophobic residues (preferably alanine) occupying P3.

Cellular Location

Secreted, extracellular space, extracellular matrix

Tissue Location

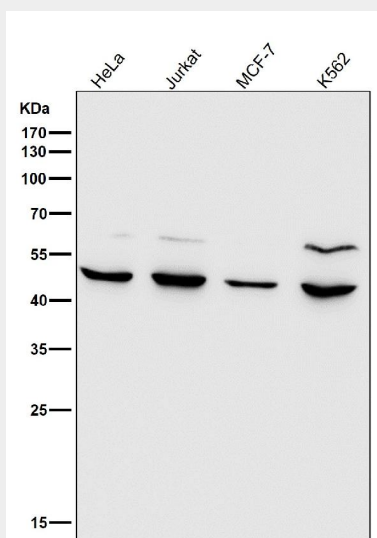
Found in alveolar macrophages but not in peripheral blood monocytes

Anti-MMP12 Rabbit Monoclonal Antibody - Protocols

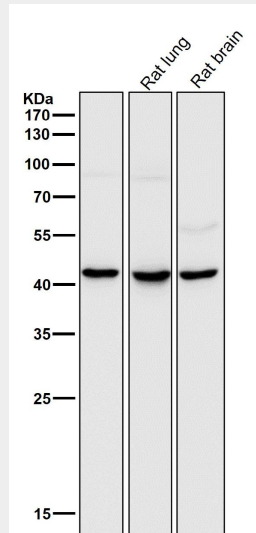
Provided below are standard protocols that you may find useful for product applications.

- [Western Blot](#)
- [Blocking Peptides](#)
- [Dot Blot](#)
- [Immunohistochemistry](#)
- [Immunofluorescence](#)
- [Immunoprecipitation](#)
- [Flow Cytometry](#)
- [Cell Culture](#)

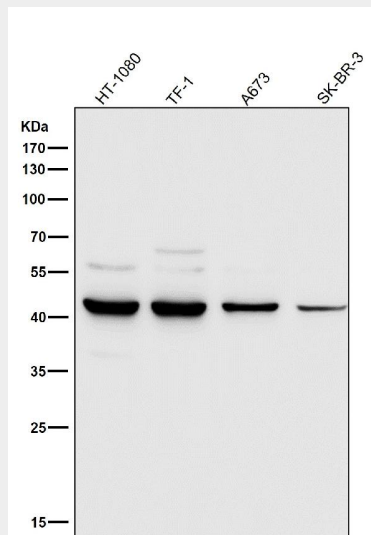
Anti-MMP12 Rabbit Monoclonal Antibody - Images



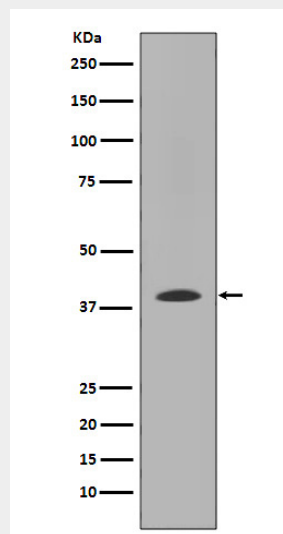
All lanes use the Antibody at 1:1K dilution for 1 hour at room temperature.



All lanes use the Antibody at 1:1K dilution for 1 hour at room temperature.



All lanes use the Antibody at 1:1K dilution for 1 hour at room temperature.



Western blot analysis of MMP12 expression in WI-38 cell lysate.