

Anti-B Raf Rabbit Monoclonal Antibody
Catalog # ABO13623**Specification****Anti-B Raf Rabbit Monoclonal Antibody - Product Information**

Application	WB, IHC, IP, FC
Primary Accession	P15056
Host	Rabbit
Isotype	Rabbit IgG
Reactivity	Rat, Human, Mouse
Clonality	Monoclonal
Format	Liquid

Description

Anti-B Raf Rabbit Monoclonal Antibody . Tested in WB, IHC, IP, Flow Cytometry applications. This antibody reacts with Human, Mouse, Rat.

Anti-B Raf Rabbit Monoclonal Antibody - Additional Information

Gene ID 673

Other Names

Serine/threonine-protein kinase B-raf, 2.7.11.1, Proto-oncogene B-Raf, p94, v-Raf murine sarcoma viral oncogene homolog B1, BRAF ([HGNC:1097](http://www.genenames.org/cgi-bin/gene_symbol_report?hgnc_id=1097)), BRAF1, RAFB1

Calculated MW

84437 MW KDa

Application Details

WB 1:500-1:2000
IHC 1:50-1:200
IP 1:50
FC 1:50

Subcellular Localization

Nucleus. Cytoplasm. Cell membrane. Colocalizes with RGS14 and RAF1 in both the cytoplasm and membranes..

Tissue Specificity

Brain and testis.

Contents

Rabbit IgG in phosphate buffered saline, pH 7.4, 150mM NaCl, 0.02% sodium azide and 50% glycerol, 0.4-0.5mg/ml BSA.

Immunogen

A synthesized peptide derived from human B Raf

Purification

Affinity-chromatography

Storage

Store at -20°C for one year. For short term storage and frequent use, store at 4°C for up to one month. Avoid repeated freeze-thaw cycles.

Anti-B Raf Rabbit Monoclonal Antibody - Protein Information

Name BRAF ([HGNC:1097](#))

Synonyms BRAF1, RAFB1

Function

Protein kinase involved in the transduction of mitogenic signals from the cell membrane to the nucleus (Probable). Phosphorylates MAP2K1, and thereby activates the MAP kinase signal transduction pathway (PubMed:[21441910](http://www.uniprot.org/citations/21441910)), PubMed:[29433126](http://www.uniprot.org/citations/29433126)). Phosphorylates PFKFB2 (PubMed:[36402789](http://www.uniprot.org/citations/36402789)). May play a role in the postsynaptic responses of hippocampal neurons (PubMed:[1508179](http://www.uniprot.org/citations/1508179)).

Cellular Location

Nucleus. Cytoplasm. Cell membrane. Note=Colocalizes with RGS14 and RAF1 in both the cytoplasm and membranes.

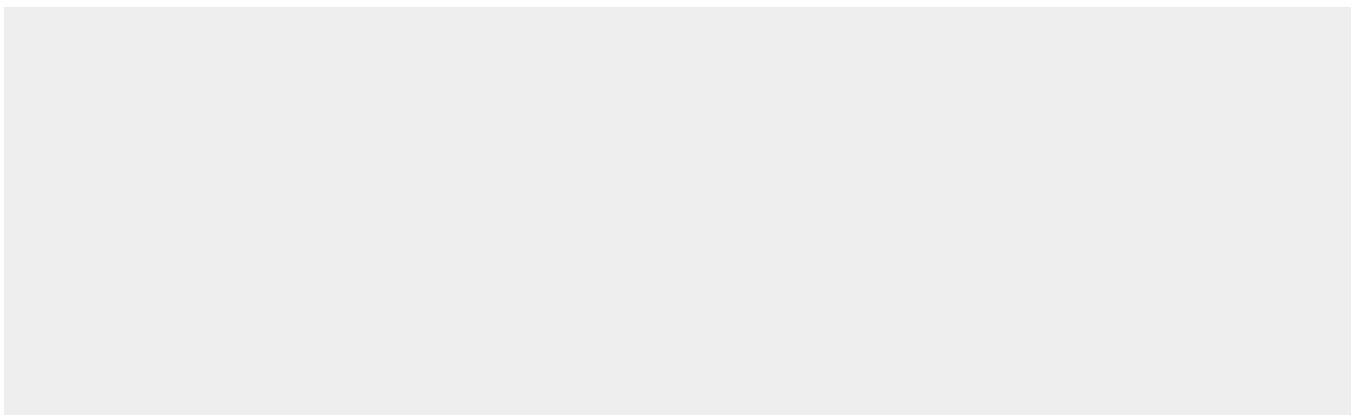
Tissue Location

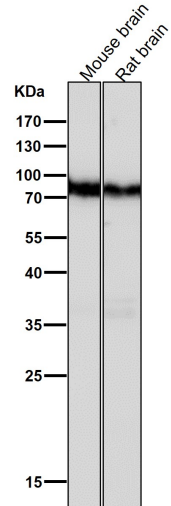
Brain and testis.

Anti-B Raf Rabbit Monoclonal Antibody - Protocols

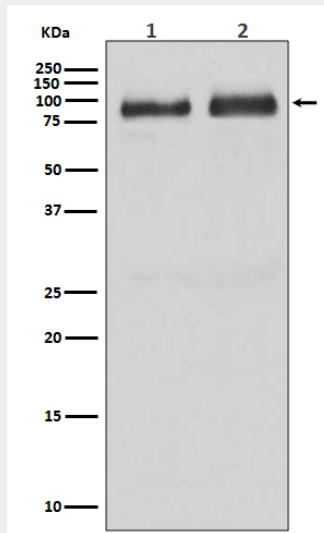
Provided below are standard protocols that you may find useful for product applications.

- [Western Blot](#)
- [Blocking Peptides](#)
- [Dot Blot](#)
- [Immunohistochemistry](#)
- [Immunofluorescence](#)
- [Immunoprecipitation](#)
- [Flow Cytometry](#)
- [Cell Culture](#)

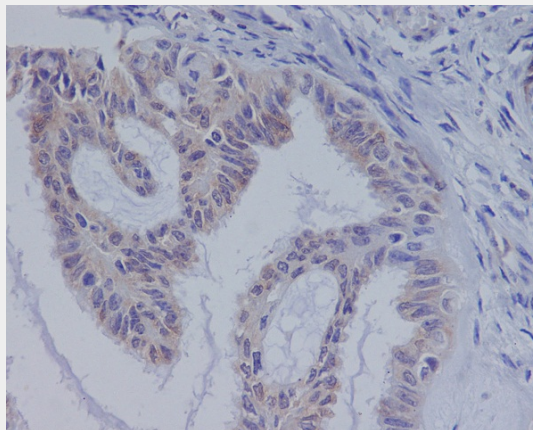
Anti-B Raf Rabbit Monoclonal Antibody - Images



All lanes use the Antibody at 1:2K dilution for 1 hour at room temperature.



Western blot analysis of B Raf expression in (1)Human brain lysate (2)HepG2 cell lysate.



Immunohistochemical analysis of paraffin-embedded human ovarian cancer, using B Raf Antibody.