

Anti-TRAF4 Rabbit Monoclonal Antibody
Catalog # ABO13610**Specification****Anti-TRAF4 Rabbit Monoclonal Antibody - Product Information**

Application	WB, IF, ICC, FC
Primary Accession	O9BUZ4
Host	Rabbit
Isotype	Rabbit IgG
Reactivity	Human, Mouse
Clonality	Monoclonal
Format	Liquid

Description

Anti-TRAF4 Rabbit Monoclonal Antibody . Tested in WB, ICC/IF, Flow Cytometry applications. This antibody reacts with Human, Mouse.

Anti-TRAF4 Rabbit Monoclonal Antibody - Additional Information

Gene ID 9618

Other Names

TNF receptor-associated factor 4, 2.3.2.27, Cysteine-rich domain associated with RING and Traf domains protein 1, Metastatic lymph node gene 62 protein, MLN 62, RING finger protein 83, TRAF4, CART1, MLN62, RNF83

Calculated MW

53543 MW KDa

Application Details

WB 1:1000-1:2000
ICC/IF 1:50-1:200
FC 1:50

Subcellular Localization

Cytoplasm. Nucleus. Cytoplasm, perinuclear region. Cell junction, tight junction. Cell membrane; Peripheral membrane protein; Cytoplasmic side. Cytoplasm, cytoskeleton.

Tissue Specificity

Expressed in epithelial cells of thymus, dendritic cells of lymph node, and in the basal cell layer of epithelia such as epidermis, nasopharynx, respiratory tract, salivary gland, and esophagus..

Contents

Rabbit IgG in phosphate buffered saline, pH 7.4, 150mM NaCl, 0.02% sodium azide and 50% glycerol, 0.4-0.5mg/ml BSA.

Immunogen

A synthesized peptide derived from human TRAF4

Purification

Affinity-chromatography

Storage

Store at -20°C for one year. For short term storage and frequent use, store at 4°C for up to one month. Avoid repeated freeze-thaw cycles.

Anti-TRAF4 Rabbit Monoclonal Antibody - Protein Information**Name** TRAF4**Synonyms** CART1, MLN62, RNF83**Function**

Adapter protein with E3 ligase activity that is involved in many diverse biological processes including cell proliferation, migration, differentiation, DNA repair, platelet activation or apoptosis (PubMed: 30352854, PubMed: 31076633, PubMed: 32268273, PubMed: 33991522). Promotes EGFR-mediated signaling by facilitating the dimerization of EGFR and downstream AKT activation thereby promoting cell proliferation (PubMed: 30352854). Ubiquitinates SMURF2 through 'Lys-48'-linked ubiquitin chain leading to SMURF2 degradation through the proteasome and subsequently osteogenic differentiation (PubMed: 31076633). Promotes 'Lys-63'-mediated ubiquitination of CHK1 which in turn activates cell cycle arrest and activation of DNA repair (PubMed: 32357935). In addition, promotes an atypical 'Lys-29'-linked ubiquitination at the C-terminal end of IRS1 which is crucial for insulin-like growth factor (IGF) signal transduction (PubMed: 33991522). Regulates activation of NF-kappa-B in response to signaling through Toll-like receptors. Required for normal skeleton development, and for normal development of the respiratory tract (By similarity). Required for activation of RPS6KB1 in response to TNF signaling. Modulates TRAF6 functions. Inhibits adipogenic differentiation by activating pyruvate kinase PKM activity and subsequently the beta-catenin signaling pathway (PubMed: 32268273).

Cellular Location

Cytoplasm. Nucleus. Cytoplasm, perinuclear region. Cell junction, tight junction. Cell membrane; Peripheral membrane protein; Cytoplasmic side. Cytoplasm, cytoskeleton

Tissue Location

Expressed in epithelial cells of thymus, dendritic cells of lymph node, and in the basal cell layer of epithelia such as epidermis, nasopharynx, respiratory tract, salivary gland, and esophagus.

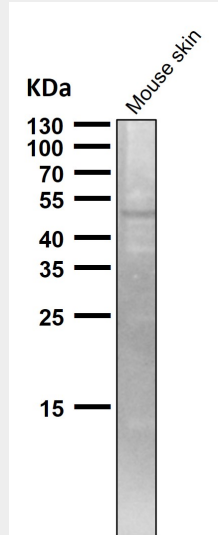
Anti-TRAF4 Rabbit Monoclonal Antibody - Protocols

Provided below are standard protocols that you may find useful for product applications.

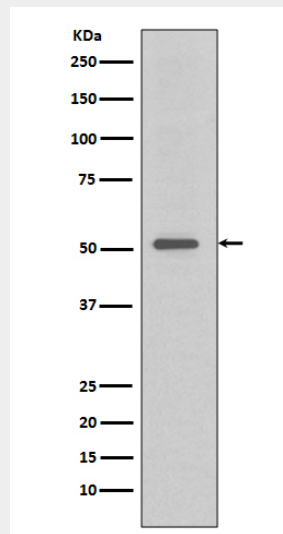
- [Western Blot](#)
- [Blocking Peptides](#)
- [Dot Blot](#)
- [Immunohistochemistry](#)
- [Immunofluorescence](#)
- [Immunoprecipitation](#)

- [Flow Cytometry](#)
- [Cell Culture](#)

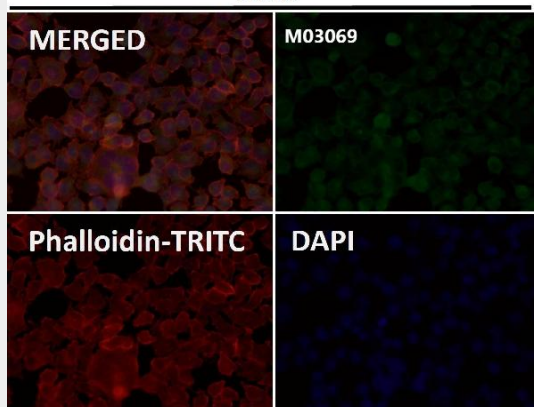
Anti-TRAF4 Rabbit Monoclonal Antibody - Images



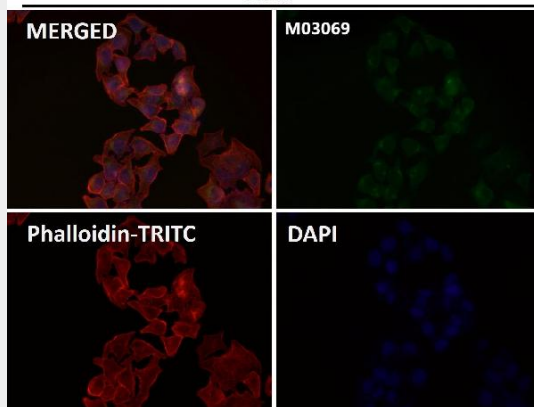
All lanes use the Antibody at 1:1K dilution for 1 hour at room temperature.



Western blot analysis of TRAF4 expression in HeLa cell lysate.

Hela

Immunofluorescent analysis using the Antibody at 1:50 dilution.

Hela

Immunofluorescent analysis using the Antibody at 1:150 dilution.