

Anti-CD11c ITGAX Rabbit Monoclonal Antibody
Catalog # ABO13603**Specification****Anti-CD11c ITGAX Rabbit Monoclonal Antibody - Product Information**

Application	WB, IHC, IF, ICC, IP
Primary Accession	P20702
Host	Rabbit
Isotype	Rabbit IgG
Reactivity	Human
Clonality	Monoclonal
Format	Liquid

Description

Anti-CD11c ITGAX Rabbit Monoclonal Antibody . Tested in WB, IHC, ICC/IF, IP applications. This antibody reacts with Human.

Anti-CD11c ITGAX Rabbit Monoclonal Antibody - Additional Information

Gene ID 3687

Other Names

Integrin alpha-X, CD11 antigen-like family member C, Leu M5, Leukocyte adhesion glycoprotein p150, 95 alpha chain, Leukocyte adhesion receptor p150, 95, CD11c, ITGAX, CD11C

Calculated MW

127829 MW KDa

Application Details

WB 1:500-1:2000
IHC 1:50-1:200
ICC/IF 1:50-1:200
IP 1:50

Subcellular Localization

Membrane; Single-pass type I membrane protein.

Tissue Specificity

Predominantly expressed in monocytes and granulocytes.

Contents

Rabbit IgG in phosphate buffered saline, pH 7.4, 150mM NaCl, 0.02% sodium azide and 50% glycerol, 0.4-0.5mg/ml BSA.

Immunogen

A synthesized peptide derived from human CD11c

Purification

Affinity-chromatography

Storage

Store at -20°C for one year. For short term storage and frequent use, store at 4°C for up to one month. Avoid repeated

freeze-thaw cycles.

Anti-CD11c ITGAX Rabbit Monoclonal Antibody - Protein Information

Name ITGAX

Synonyms CD11C

Function

Integrin alpha-X/beta-2 is a receptor for fibrinogen. It recognizes the sequence G-P-R in fibrinogen. It mediates cell-cell interaction during inflammatory responses. It is especially important in monocyte adhesion and chemotaxis.

Cellular Location

Membrane; Single-pass type I membrane protein.

Tissue Location

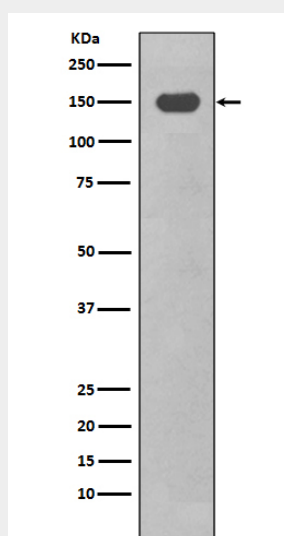
Predominantly expressed in monocytes and granulocytes

Anti-CD11c ITGAX Rabbit Monoclonal Antibody - Protocols

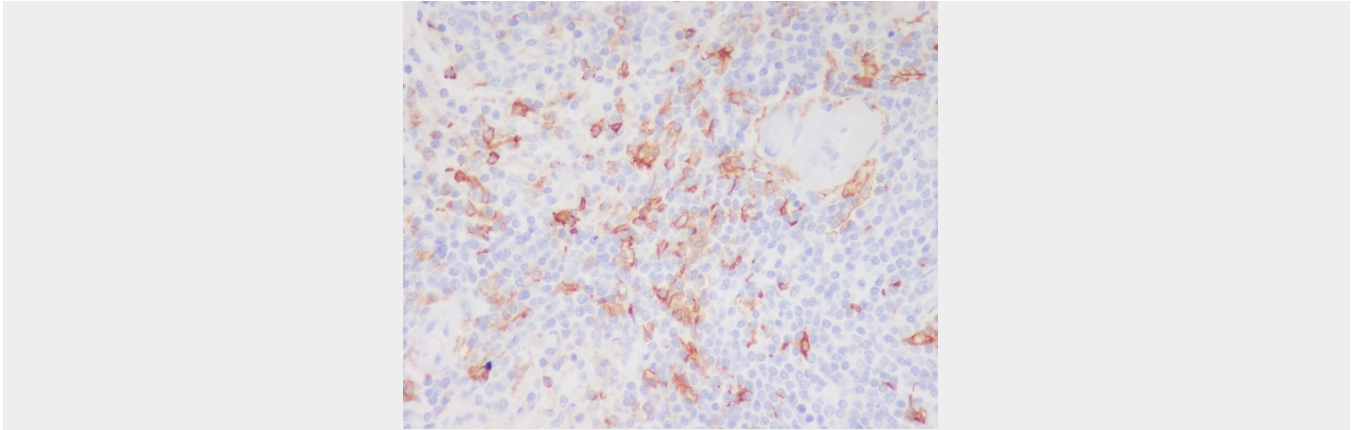
Provided below are standard protocols that you may find useful for product applications.

- [Western Blot](#)
- [Blocking Peptides](#)
- [Dot Blot](#)
- [Immunohistochemistry](#)
- [Immunofluorescence](#)
- [Immunoprecipitation](#)
- [Flow Cytometry](#)
- [Cell Culture](#)

Anti-CD11c ITGAX Rabbit Monoclonal Antibody - Images



Western blot analysis of CD11c expression in THP-1 cell lysate treated with TPA.



Immunohistochemical analysis of paraffin-embedded human spleen, using CD11c Antibody.