

**Anti-TRAF6 Rabbit Monoclonal Antibody**  
Catalog # ABO13596

**Specification**

---

**Anti-TRAF6 Rabbit Monoclonal Antibody - Product Information**

Application	WB, IHC, FC
Primary Accession	<a href="#">Q9Y4K3</a>
Host	Rabbit
Isotype	Rabbit IgG
Reactivity	Rat, Human, Mouse
Clonality	Monoclonal
Format	Liquid

**Description**

Anti-TRAF6 Rabbit Monoclonal Antibody . Tested in WB, IHC, Flow Cytometry applications. This antibody reacts with Human, Mouse, Rat.

**Anti-TRAF6 Rabbit Monoclonal Antibody - Additional Information**

**Gene ID** 7189

**Other Names**

TNF receptor-associated factor 6, 2.3.2.27, E3 ubiquitin-protein ligase TRAF6, Interleukin-1 signal transducer, RING finger protein 85, RING-type E3 ubiquitin transferase TRAF6, TRAF6, RNF85

**Calculated MW**

59573 MW KDa

**Application Details**

WB 1:500-1:2000<br>IHC 1:50-1:200<br>FC 1:50-1:200

**Subcellular Localization**

Cytoplasm. Cytoplasm, cell cortex. Nucleus. Lipid droplet. Found in the nuclei of some aggressive B-cell lymphoma cell lines as well as in the nuclei of both resting and activated T- and B-lymphocytes. Found in punctate nuclear body protein complexes. Ubiquitination may occur in the cytoplasm and sumoylation in the nucleus. RSAD2/viperin recruits it to the lipid droplet (By similarity)..

**Tissue Specificity**

Expressed in heart, brain, placenta, lung, liver, skeletal muscle, kidney and pancreas.

**Contents**

Rabbit IgG in phosphate buffered saline, pH 7.4, 150mM NaCl, 0.02% sodium azide and 50% glycerol, 0.4-0.5mg/ml BSA.

**Immunogen**

A synthesized peptide derived from human TRAF6

**Purification**

Affinity-chromatography

**Storage**

**Store at -20°C for one year. For short term storage and frequent use, store at 4°C for up to one month. Avoid repeated freeze-thaw cycles.**

**Anti-TRAF6 Rabbit Monoclonal Antibody - Protein Information****Name** TRAF6**Synonyms** RNF85**Function**

E3 ubiquitin ligase that, together with UBE2N and UBE2V1, mediates the synthesis of 'Lys-63'-linked-polyubiquitin chains conjugated to proteins, such as ECSIT, IKBKG, IRAK1, AKT1 and AKT2 (PubMed: <a href="http://www.uniprot.org/citations/11057907" target="\_blank">11057907</a>, PubMed: <a href="http://www.uniprot.org/citations/18347055" target="\_blank">18347055</a>, PubMed: <a href="http://www.uniprot.org/citations/19465916" target="\_blank">19465916</a>, PubMed: <a href="http://www.uniprot.org/citations/19713527" target="\_blank">19713527</a>, PubMed: <a href="http://www.uniprot.org/citations/31620128" target="\_blank">31620128</a>). Also mediates ubiquitination of free/unanchored polyubiquitin chain that leads to MAP3K7 activation (PubMed: <a href="http://www.uniprot.org/citations/19675569" target="\_blank">19675569</a>). Leads to the activation of NF-kappa-B and JUN (PubMed: <a href="http://www.uniprot.org/citations/16378096" target="\_blank">16378096</a>, PubMed: <a href="http://www.uniprot.org/citations/17135271" target="\_blank">17135271</a>, PubMed: <a href="http://www.uniprot.org/citations/17703191" target="\_blank">17703191</a>). Seems to also play a role in dendritic cells (DCs) maturation and/or activation (By similarity). Represses c-Myb-mediated transactivation, in B-lymphocytes (PubMed: <a href="http://www.uniprot.org/citations/18093978" target="\_blank">18093978</a>, PubMed: <a href="http://www.uniprot.org/citations/18758450" target="\_blank">18758450</a>). Adapter protein that seems to play a role in signal transduction initiated via TNF receptor, IL-1 receptor and IL-17 receptor (PubMed: <a href="http://www.uniprot.org/citations/12140561" target="\_blank">12140561</a>, PubMed: <a href="http://www.uniprot.org/citations/19825828" target="\_blank">19825828</a>, PubMed: <a href="http://www.uniprot.org/citations/8837778" target="\_blank">8837778</a>). Regulates osteoclast differentiation by mediating the activation of adapter protein complex 1 (AP-1) and NF-kappa-B, in response to RANK-L stimulation (By similarity). Together with MAP3K8, mediates CD40 signals that activate ERK in B-cells and macrophages, and thus may play a role in the regulation of immunoglobulin production (By similarity). Participates also in the TCR signaling by ubiquitinating LAT (PubMed: <a href="http://www.uniprot.org/citations/23514740" target="\_blank">23514740</a>, PubMed: <a href="http://www.uniprot.org/citations/25907557" target="\_blank">25907557</a>).

**Cellular Location**

Cytoplasm. Cytoplasm, cell cortex. Nucleus. Lipid droplet {ECO:0000250|UniProtKB:P70196}. Note=Found in the nuclei of some aggressive B-cell lymphoma cell lines as well as in the nuclei of both resting and activated T- and B-lymphocytes. Found in punctate nuclear body protein complexes. Ubiquitination may occur in the cytoplasm and sumoylation in the nucleus. RSAD2/viperin recruits it to the lipid droplet (By similarity).

**Tissue Location**

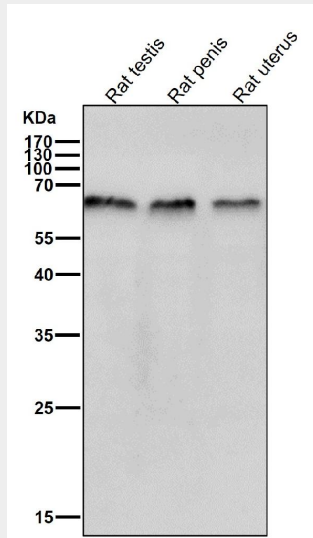
Expressed in heart, brain, placenta, lung, liver, skeletal muscle, kidney and pancreas

**Anti-TRAF6 Rabbit Monoclonal Antibody - Protocols**

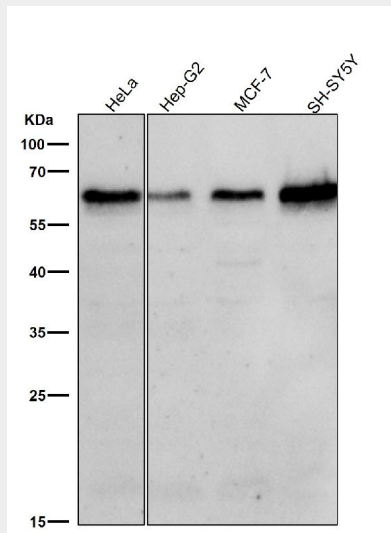
Provided below are standard protocols that you may find useful for product applications.

- [Western Blot](#)
- [Blocking Peptides](#)
- [Dot Blot](#)
- [Immunohistochemistry](#)
- [Immunofluorescence](#)
- [Immunoprecipitation](#)
- [Flow Cytometry](#)
- [Cell Culture](#)

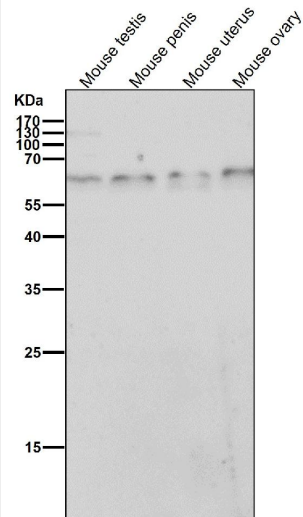
### Anti-TRAF6 Rabbit Monoclonal Antibody - Images



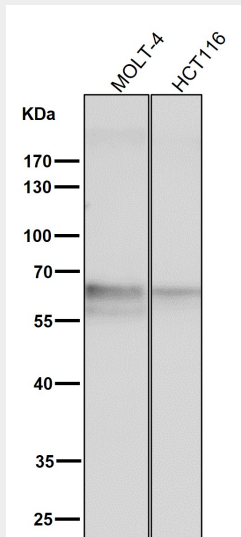
All lanes use the Antibody at 1:3K dilution for 1 hour at room temperature.



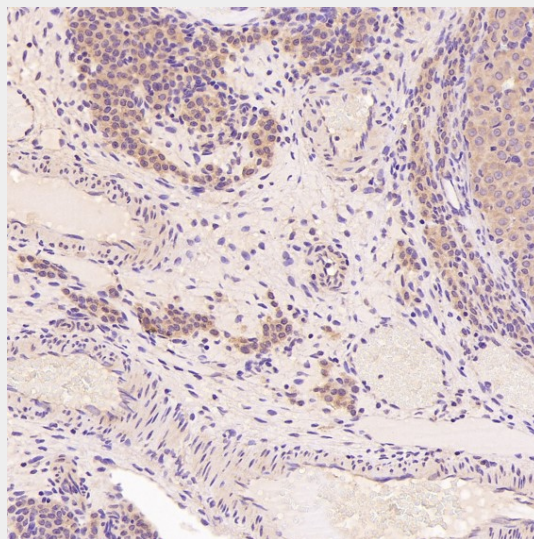
All lanes use the Antibody at 1:3K dilution for 1 hour at room temperature.



All lanes use the Antibody at 1:3K dilution for 1 hour at room temperature.

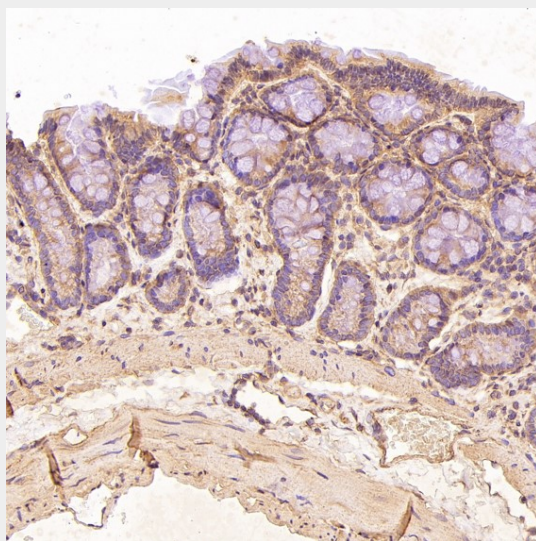


All lanes use the Antibody at 1:3K dilution for 1 hour at room temperature.

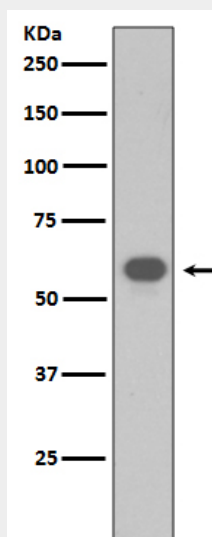


Immunohistochemical analysis of paraffin-embedded Rat ovary, using the Antibody at 1:50

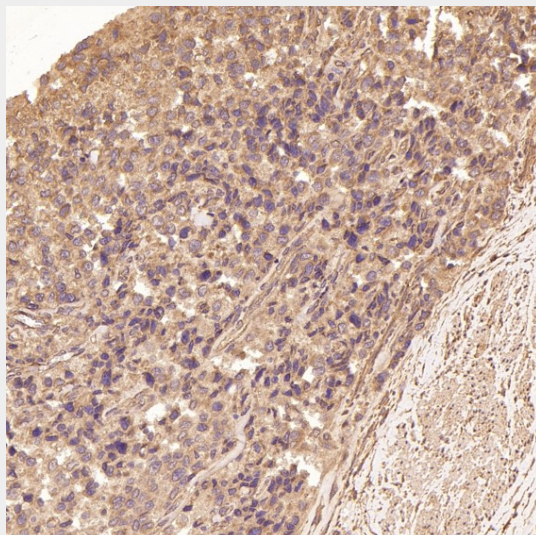
dilution.



Immunohistochemical analysis of paraffin-embedded Rat stomach, using the Antibody at 1:50 dilution.

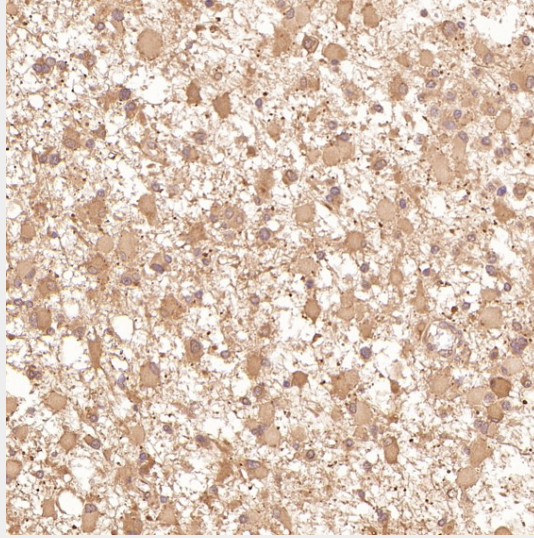


Western blot analysis of TRAF6 expression in NIH/3T3 cell lysate.

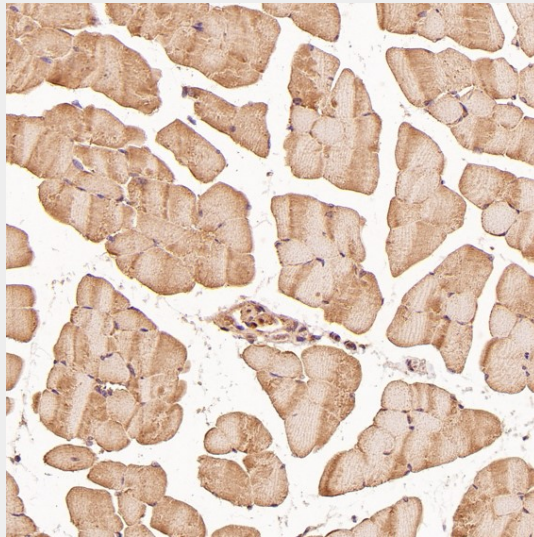




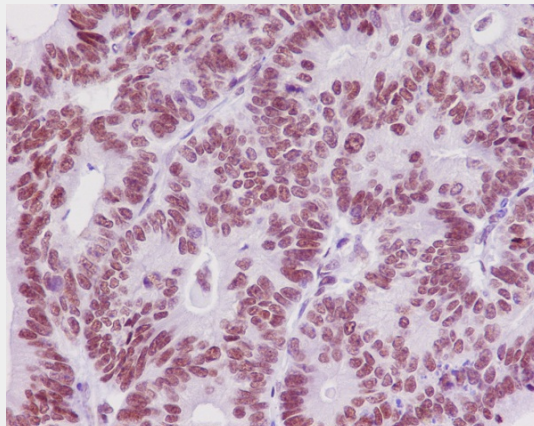
Immunohistochemical analysis of paraffin-embedded Human prostate cancer, using the Antibody at 1:50 dilution.



Immunohistochemical analysis of paraffin-embedded Human astrocytoma, using the Antibody at 1:50 dilution.



Immunohistochemical analysis of paraffin-embedded Mouse skeletal muscle - gastrocnemius , using the Antibody at 1:50 dilution.



Immunohistochemical analysis of paraffin-embedded human colon carcinoma, using TRAF6 Antibody.