

## Anti-Rab4A/Rab4 Rabbit Monoclonal Antibody Catalog # ABO13584

### Specification

---

#### Anti-Rab4A/Rab4 Rabbit Monoclonal Antibody - Product Information

Application	WB, IF, ICC, IP
Primary Accession	<a href="#">P20338</a>
Host	Rabbit
Isotype	Rabbit IgG
Reactivity	Rat, Human, Mouse
Clonality	Monoclonal
Format	Liquid

#### Description

Anti-Rab4A/Rab4 Rabbit Monoclonal Antibody . Tested in WB, ICC/IF, IP applications. This antibody reacts with Human, Mouse, Rat.

#### Anti-Rab4A/Rab4 Rabbit Monoclonal Antibody - Additional Information

**Gene ID** 5867

#### Other Names

Ras-related protein Rab-4A, 3.6.5.2, RAB4A, RAB4

#### Calculated MW

24390 MW KDa

#### Application Details

WB 1:1000-1:2000<br>ICC/IF 1:50-1:200<br>IP 1:50

#### Subcellular Localization

Membrane; Peripheral membrane protein. Cytoplasm. Generally associated with membranes. Cytoplasmic when phosphorylated by CDK1.

#### Contents

Rabbit IgG in phosphate buffered saline, pH 7.4, 150mM NaCl, 0.02% sodium azide and 50% glycerol, 0.4-0.5mg/ml BSA.

#### Immunogen

A synthesized peptide derived from human Rab4A

#### Purification

Affinity-chromatography

Storage

**Store at -20°C for one year. For short term storage and frequent use, store at 4°C for up to one month. Avoid repeated freeze-thaw cycles.**

#### Anti-Rab4A/Rab4 Rabbit Monoclonal Antibody - Protein Information

**Name** RAB4A

**Synonyms** RAB4

**Function**

Small GTPase which cycles between an active GTP-bound and an inactive GDP-bound state (PubMed:<a href="http://www.uniprot.org/citations/15907487" target="\_blank">15907487</a>, PubMed:<a href="http://www.uniprot.org/citations/16034420" target="\_blank">16034420</a>). Involved in protein transport (PubMed:<a href="http://www.uniprot.org/citations/29425100" target="\_blank">29425100</a>). Plays a role in vesicular traffic. Mediates VEGFR2 endosomal trafficking to enhance VEGFR2 signaling (PubMed:<a href="http://www.uniprot.org/citations/29425100" target="\_blank">29425100</a>). Acts as a regulator of platelet alpha- granule release during activation and aggregation of platelets (By similarity).

**Cellular Location**

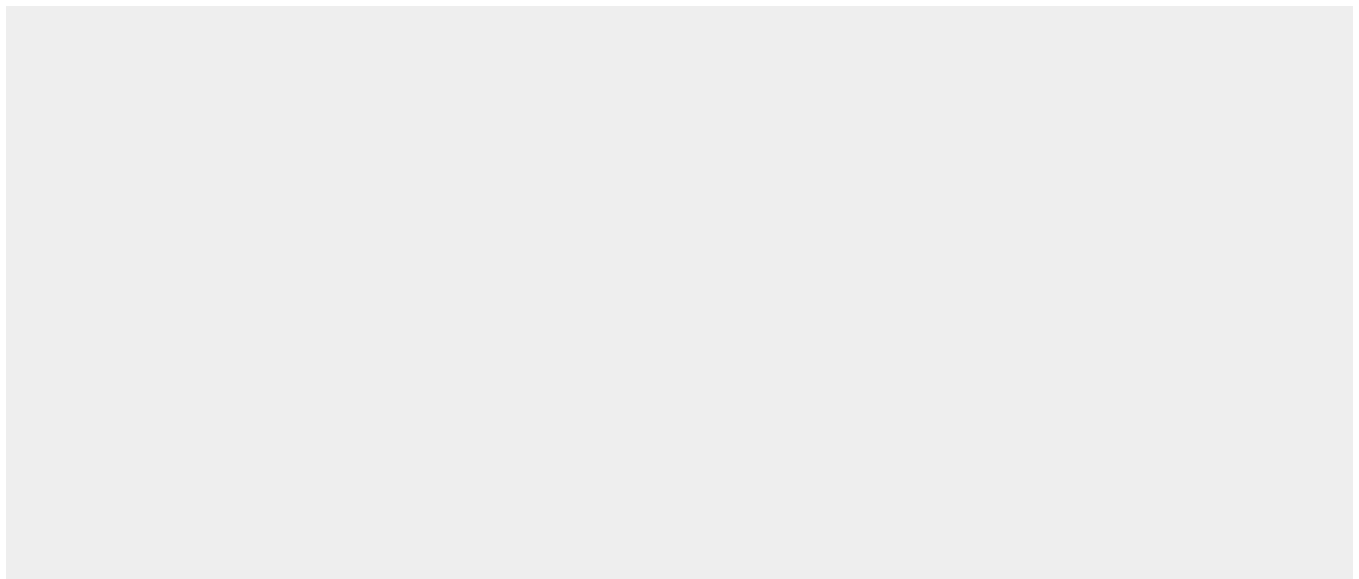
Membrane; Peripheral membrane protein. Cytoplasm Early endosome membrane {ECO:0000250|UniProtKB:P05714}; Peripheral membrane protein {ECO:0000250|UniProtKB:P05714}. Recycling endosome membrane {ECO:0000250|UniProtKB:P05714}; Peripheral membrane protein {ECO:0000250|UniProtKB:P05714}. Note=Generally associated with membranes. Cytoplasmic when phosphorylated by CDK1

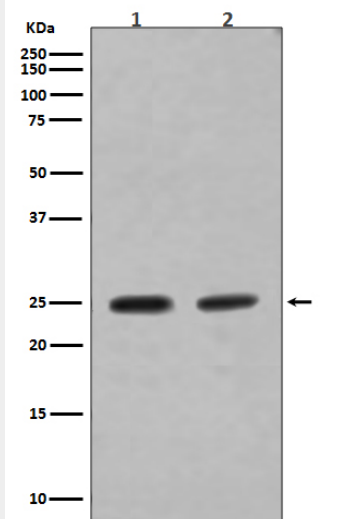
**Anti-Rab4A/Rab4 Rabbit Monoclonal Antibody - Protocols**

Provided below are standard protocols that you may find useful for product applications.

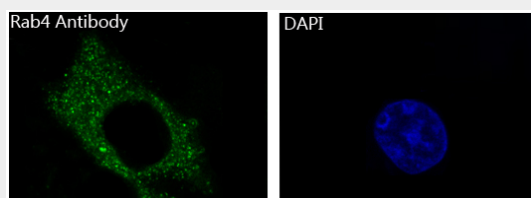
- [Western Blot](#)
- [Blocking Peptides](#)
- [Dot Blot](#)
- [Immunohistochemistry](#)
- [Immunofluorescence](#)
- [Immunoprecipitation](#)
- [Flow Cytometry](#)
- [Cell Culture](#)

**Anti-Rab4A/Rab4 Rabbit Monoclonal Antibody - Images**





Western blot analysis of Rab4A expression in (1) SH-SY5Y cell lysate; (2) MCF-7 cell lysate.



Immunofluorescent analysis of HeLa cells, using Rab4A Antibody.