

**Anti-TGFBI/Beta Ig H3 Rabbit Monoclonal Antibody**  
Catalog # ABO13569

**Specification**

**Anti-TGFBI/Beta Ig H3 Rabbit Monoclonal Antibody - Product Information**

Application	WB, IHC, IF, ICC
Primary Accession	<a href="#">Q15582</a>
Host	Rabbit
Isotype	Rabbit IgG
Reactivity	Rat, Human, Mouse
Clonality	Monoclonal
Format	Liquid

**Description**

Anti-TGFBI/Beta Ig H3 Rabbit Monoclonal Antibody . Tested in WB, IHC, ICC/IF applications. This antibody reacts with Human, Mouse, Rat.

**Anti-TGFBI/Beta Ig H3 Rabbit Monoclonal Antibody - Additional Information**

**Gene ID** 7045

**Other Names**

Transforming growth factor-beta-induced protein ig-h3, Beta ig-h3, Kerato-epithelin, RGD-containing collagen-associated protein, RGD-CAP, TGFBI, BIGH3

**Calculated MW**

74681 MW KDa

**Application Details**

WB 1:500-1:2000<br>IHC 1:50-1:200<br>ICC/IF 1:50-1:200

**Subcellular Localization**

Secreted, extracellular space, extracellular matrix. May be associated both with microfibrils and with the cell surface.

**Tissue Specificity**

Highly expressed in the corneal epithelium..

**Contents**

Rabbit IgG in phosphate buffered saline, pH 7.4, 150mM NaCl, 0.02% sodium azide and 50% glycerol, 0.4-0.5mg/ml BSA.

**Immunogen**

A synthesized peptide derived from human TGFBI

**Purification**

Affinity-chromatography

**Storage**

**Store at -20°C for one year. For short term storage and frequent use, store at 4°C for**

up to one month. Avoid repeated  
freeze-thaw cycles.

## Anti-TGFBI/Beta Ig H3 Rabbit Monoclonal Antibody - Protein Information

**Name** TGFBI

**Synonyms** BIGH3

### Function

Plays a role in cell adhesion (PubMed:<a href="http://www.uniprot.org/citations/8024701" target="\_blank">8024701</a>). May play a role in cell-collagen interactions (By similarity).

### Cellular Location

Secreted. Secreted, extracellular space, extracellular matrix Note=May be associated both with microfibrils and with the cell surface (PubMed:8077289).

### Tissue Location

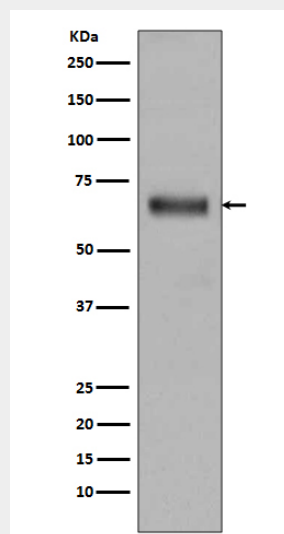
Highly expressed in the corneal epithelium (PubMed:27609313, PubMed:8077289). Expressed in heart, placenta, lung, liver, skeletal muscle, kidney and pancreas (PubMed:8077289)

## Anti-TGFBI/Beta Ig H3 Rabbit Monoclonal Antibody - Protocols

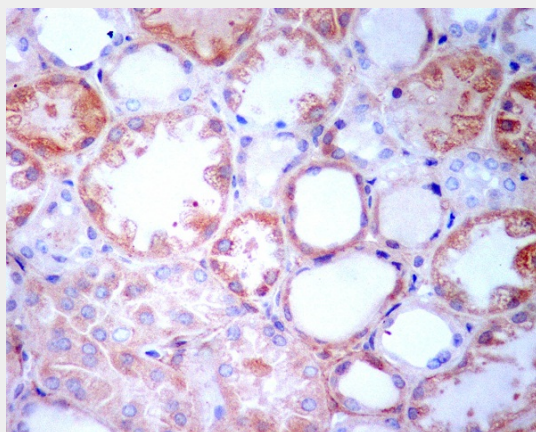
Provided below are standard protocols that you may find useful for product applications.

- [Western Blot](#)
- [Blocking Peptides](#)
- [Dot Blot](#)
- [Immunohistochemistry](#)
- [Immunofluorescence](#)
- [Immunoprecipitation](#)
- [Flow Cytometry](#)
- [Cell Culture](#)

## Anti-TGFBI/Beta Ig H3 Rabbit Monoclonal Antibody - Images



Western blot analysis of TGFBI expression in Human fetal kidney lysate.



Immunohistochemical analysis of paraffin-embedded human kidney, using TGFBI Antibody.