

Anti-GCLC Rabbit Monoclonal Antibody
Catalog # ABO13551**Specification****Anti-GCLC Rabbit Monoclonal Antibody - Product Information**

Application	WB
Primary Accession	P48506
Host	Rabbit
Isotype	Rabbit IgG
Reactivity	Rat, Human
Clonality	Monoclonal
Format	Liquid

Description

Anti-GCLC Rabbit Monoclonal Antibody . Tested in WB application. This antibody reacts with Human, Rat.

Anti-GCLC Rabbit Monoclonal Antibody - Additional Information

Gene ID 2729

Other Names

Glutamate--cysteine ligase catalytic subunit, 6.3.2.2, GCS heavy chain, Gamma-ECS, Gamma-glutamylcysteine synthetase, GCLC (http://www.genenames.org/cgi-bin/gene_symbol_report?hgnc_id=4311 target="_blank">HGNC:4311), GLCL, GLCLC

Calculated MW

72766 MW KDa

Application Details

WB 1:500-1:2000

Contents

Rabbit IgG in phosphate buffered saline, pH 7.4, 150mM NaCl, 0.02% sodium azide and 50% glycerol, 0.4-0.5mg/ml BSA.

Immunogen

A synthesized peptide derived from human GCLC

Purification

Affinity-chromatography

Storage

Store at -20°C for one year. For short term storage and frequent use, store at 4°C for up to one month. Avoid repeated freeze-thaw cycles.

Anti-GCLC Rabbit Monoclonal Antibody - Protein Information

Name GCLC ([HGNC:4311](#))

Synonyms GLCL, GLCLC

Function

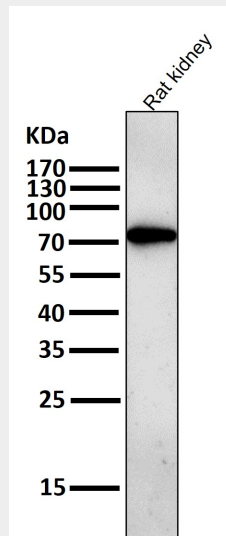
Catalyzes the ATP-dependent ligation of L-glutamate and L- cysteine and participates in the first and rate-limiting step in glutathione biosynthesis.

Anti-GCLC Rabbit Monoclonal Antibody - Protocols

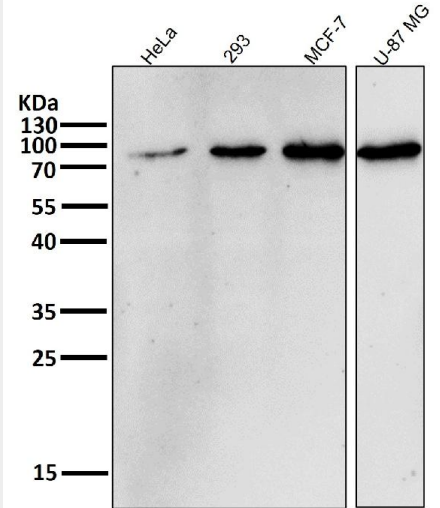
Provided below are standard protocols that you may find useful for product applications.

- [Western Blot](#)
- [Blocking Peptides](#)
- [Dot Blot](#)
- [Immunohistochemistry](#)
- [Immunofluorescence](#)
- [Immunoprecipitation](#)
- [Flow Cytometry](#)
- [Cell Culture](#)

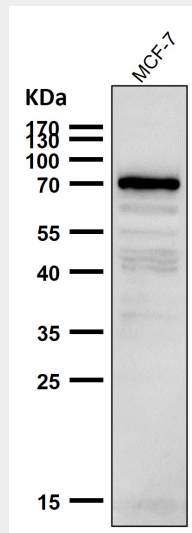
Anti-GCLC Rabbit Monoclonal Antibody - Images



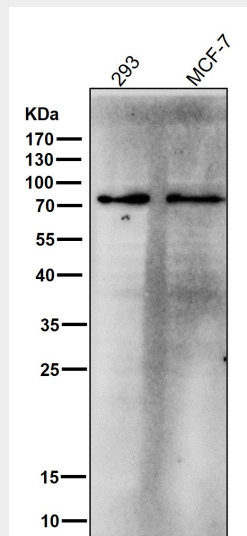
All lanes use the Antibody at 1:1K dilution for 1 hour at room temperature.



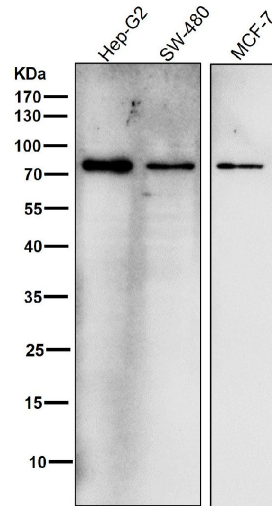
All lanes use the Antibody at 1:1K dilution for 1 hour at room temperature.



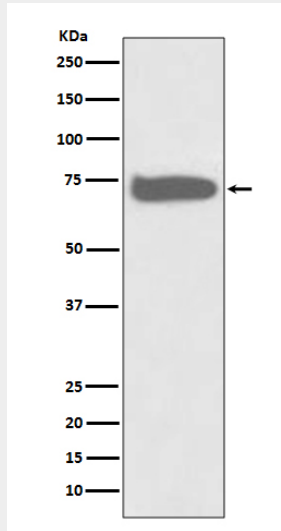
All lanes use the Antibody at 1:1K dilution for 1 hour at room temperature.



All lanes use the Antibody at 1:1K dilution for 1 hour at room temperature.



All lanes use the Antibody at 1:1K dilution for 1 hour at room temperature.



Western blot analysis of GCLC expression in HepG2 cell lysate.