

Anti-ADFP PLIN2 Rabbit Monoclonal Antibody
Catalog # ABO13544**Specification****Anti-ADFP PLIN2 Rabbit Monoclonal Antibody - Product Information**

Application	WB, IF, ICC, FC
Primary Accession	Q99541
Host	Rabbit
Isotype	Rabbit IgG
Reactivity	Rat, Human, Mouse
Clonality	Monoclonal
Format	Liquid

Description

Anti-ADFP PLIN2 Rabbit Monoclonal Antibody . Tested in WB, ICC/IF, Flow Cytometry applications. This antibody reacts with Human, Mouse, Rat.

Anti-ADFP PLIN2 Rabbit Monoclonal Antibody - Additional Information

Gene ID 123

Other Names

Perilipin-2 {ECO:0000312|HGNC:HGNC:248}, Adipophilin, Adipose differentiation-related protein, ADRP, PLIN2 ([HGNC:248](http://www.genenames.org/cgi-bin/gene_symbol_report?hgnc_id=248)), ADFP

Calculated MW

48075 MW KDa

Application Details

WB 1:500-1:2000
ICC/IF 1:50-1:200
FC 1:50

Subcellular Localization

Membrane; Peripheral membrane protein.

Tissue Specificity

Milk lipid globules.

Contents

Rabbit IgG in phosphate buffered saline, pH 7.4, 150mM NaCl, 0.02% sodium azide and 50% glycerol, 0.4-0.5mg/ml BSA.

Immunogen

A synthesized peptide derived from human ADFP

Purification

Affinity-chromatography

Storage

Store at -20°C for one year. For short term storage and frequent use, store at 4°C for

up to one month. Avoid repeated
freeze-thaw cycles.

Anti-ADFP PLIN2 Rabbit Monoclonal Antibody - Protein Information

Name PLIN2 ([HGNC:248](#))

Synonyms ADFP

Function

Structural component of lipid droplets, which is required for the formation and maintenance of lipid storage droplets.

Cellular Location

Membrane {ECO:0000250|UniProtKB:P43883}; Peripheral membrane protein {ECO:0000250|UniProtKB:P43883}. Lipid droplet

Tissue Location

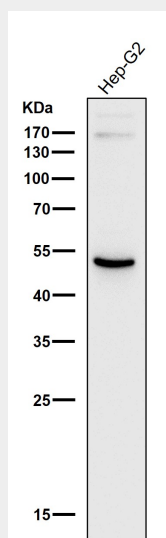
Milk lipid globules..

Anti-ADFP PLIN2 Rabbit Monoclonal Antibody - Protocols

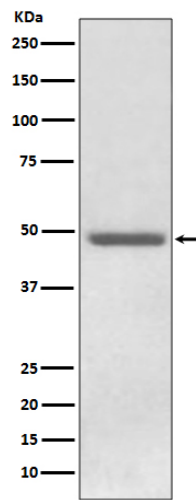
Provided below are standard protocols that you may find useful for product applications.

- [Western Blot](#)
- [Blocking Peptides](#)
- [Dot Blot](#)
- [Immunohistochemistry](#)
- [Immunofluorescence](#)
- [Immunoprecipitation](#)
- [Flow Cytometry](#)
- [Cell Culture](#)

Anti-ADFP PLIN2 Rabbit Monoclonal Antibody - Images



All lanes use the Antibody at 1:1K dilution for 1 hour at room temperature.



Western blot analysis of ADFP expression in HepG2 cell lysate.