

Anti-CD18 ITGB2 Rabbit Monoclonal Antibody
Catalog # ABO13543

Specification

Anti-CD18 ITGB2 Rabbit Monoclonal Antibody - Product Information

Application	WB, IP
Primary Accession	P05107
Host	Rabbit
Isotype	Rabbit IgG
Reactivity	Human
Clonality	Monoclonal
Format	Liquid

Description

Anti-CD18 ITGB2 Rabbit Monoclonal Antibody . Tested in WB, IP applications. This antibody reacts with Human.

Anti-CD18 ITGB2 Rabbit Monoclonal Antibody - Additional Information

Gene ID 3689

Other Names

Integrin beta-2, Cell surface adhesion glycoproteins LFA-1/CR3/p150, 95 subunit beta, Complement receptor C3 subunit beta, CD18, ITGB2, CD18, MF17

Calculated MW

84782 MW KDa

Application Details

WB 1:500-1:2000
IP 1:50

Subcellular Localization

Membrane; Single-pass type I membrane protein.

Contents

Rabbit IgG in phosphate buffered saline, pH 7.4, 150mM NaCl, 0.02% sodium azide and 50% glycerol, 0.4-0.5mg/ml BSA.

Immunogen

A synthesized peptide derived from human CD18

Purification

Affinity-chromatography

Storage

Store at -20°C for one year. For short term storage and frequent use, store at 4°C for up to one month. Avoid repeated freeze-thaw cycles.

Anti-CD18 ITGB2 Rabbit Monoclonal Antibody - Protein Information

Name ITGB2**Synonyms** CD18, MFI7**Function**

Integrin ITGAL/ITGB2 is a receptor for ICAM1, ICAM2, ICAM3 and ICAM4. Integrin ITGAL/ITGB2 is also a receptor for the secreted form of ubiquitin-like protein ISG15; the interaction is mediated by ITGAL (PubMed: [29100055](http://www.uniprot.org/citations/29100055)). Integrins ITGAM/ITGB2 and ITGAX/ITGB2 are receptors for the iC3b fragment of the third complement component and for fibrinogen. Integrin ITGAX/ITGB2 recognizes the sequence G-P-R in fibrinogen alpha-chain. Integrin ITGAM/ITGB2 recognizes P1 and P2 peptides of fibrinogen gamma chain. Integrin ITGAM/ITGB2 is also a receptor for factor X. Integrin ITGAD/ITGB2 is a receptor for ICAM3 and VCAM1. Contributes to natural killer cell cytotoxicity (PubMed: [15356110](http://www.uniprot.org/citations/15356110)). Involved in leukocyte adhesion and transmigration of leukocytes including T-cells and neutrophils (PubMed: [11812992](http://www.uniprot.org/citations/11812992), PubMed: [28807980](http://www.uniprot.org/citations/28807980)). Triggers neutrophil transmigration during lung injury through PTK2B/PYK2-mediated activation (PubMed: [18587400](http://www.uniprot.org/citations/18587400)). Integrin ITGAL/ITGB2 in association with ICAM3, contributes to apoptotic neutrophil phagocytosis by macrophages (PubMed: [23775590](http://www.uniprot.org/citations/23775590)). In association with alpha subunit ITGAM/CD11b, required for CD177-PRTN3- mediated activation of TNF primed neutrophils (PubMed: [21193407](http://www.uniprot.org/citations/21193407)).

Cellular Location

Cell membrane; Single-pass type I membrane protein. Membrane raft; Single-pass type I membrane protein

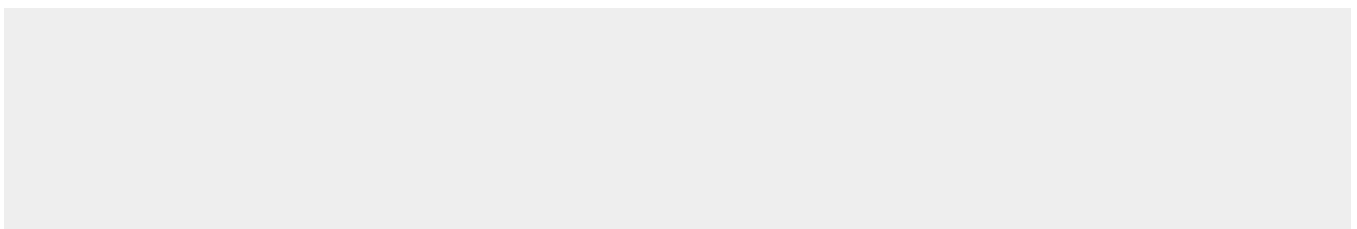
Tissue Location

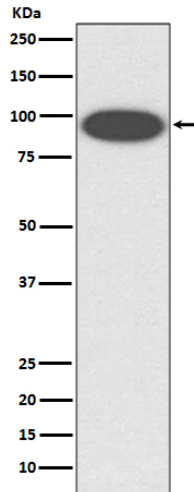
Leukocytes (PubMed:23775590). Expressed in neutrophils (at protein level) (PubMed:21193407, PubMed:28807980)

Anti-CD18 ITGB2 Rabbit Monoclonal Antibody - Protocols

Provided below are standard protocols that you may find useful for product applications.

- [Western Blot](#)
- [Blocking Peptides](#)
- [Dot Blot](#)
- [Immunohistochemistry](#)
- [Immunofluorescence](#)
- [Immunoprecipitation](#)
- [Flow Cytometry](#)
- [Cell Culture](#)

Anti-CD18 ITGB2 Rabbit Monoclonal Antibody - Images



Western blot analysis of CD18 expression in K562 cell lysate.