

Anti-CD59 Rabbit Monoclonal Antibody
Catalog # ABO13527

Specification

Anti-CD59 Rabbit Monoclonal Antibody - Product Information

Application	WB, IF, ICC, IP, FC
Primary Accession	P13987
Host	Rabbit
Isotype	Rabbit IgG
Reactivity	Human
Clonality	Monoclonal
Format	Liquid

Description

Anti-CD59 Rabbit Monoclonal Antibody . Tested in WB, ICC/IF, IP, Flow Cytometry applications. This antibody reacts with Human.

Anti-CD59 Rabbit Monoclonal Antibody - Additional Information

Gene ID 966

Other Names

CD59 glycoprotein, 1F5 antigen, 20 kDa homologous restriction factor, HRF-20, HRF20, MAC-inhibitory protein, MAC-IP, MEM43 antigen, Membrane attack complex inhibition factor, MACIF, Membrane inhibitor of reactive lysis, MIRL, Protectin, CD59, CD59, MIC11, MIN1, MIN2, MIN3, MSK21

Calculated MW

14177 MW KDa

Application Details

WB 1:1000-1:5000
ICC/IF 1:50-1:200
IP 1:50
FC 1:50

Subcellular Localization

Cell membrane; Lipid-anchor, GPI-anchor. Secreted. Soluble form found in a number of tissues.

Contents

Rabbit IgG in phosphate buffered saline, pH 7.4, 150mM NaCl, 0.02% sodium azide and 50% glycerol, 0.4-0.5mg/ml BSA.

Immunogen

A synthesized peptide derived from human CD59

Purification

Affinity-chromatography

Storage

Store at -20°C for one year. For short term storage and frequent use, store at 4°C for up to one month. Avoid repeated freeze-thaw cycles.

Anti-CD59 Rabbit Monoclonal Antibody - Protein Information

Name CD59

Synonyms MIC11, MIN1, MIN2, MIN3, MSK21

Function

Potent inhibitor of the complement membrane attack complex (MAC) action. Acts by binding to the C8 and/or C9 complements of the assembling MAC, thereby preventing incorporation of the multiple copies of C9 required for complete formation of the osmolytic pore. This inhibitor appears to be species-specific. Involved in signal transduction for T-cell activation complexed to a protein tyrosine kinase.

Cellular Location

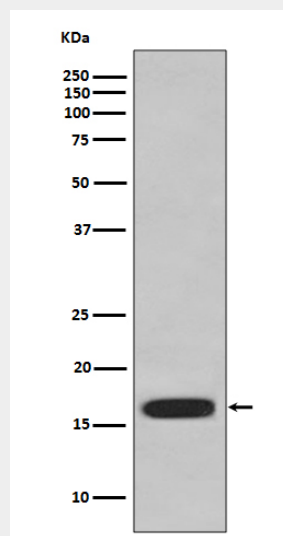
Cell membrane; Lipid-anchor, GPI-anchor. Secreted. Note=Soluble form found in a number of tissues

Anti-CD59 Rabbit Monoclonal Antibody - Protocols

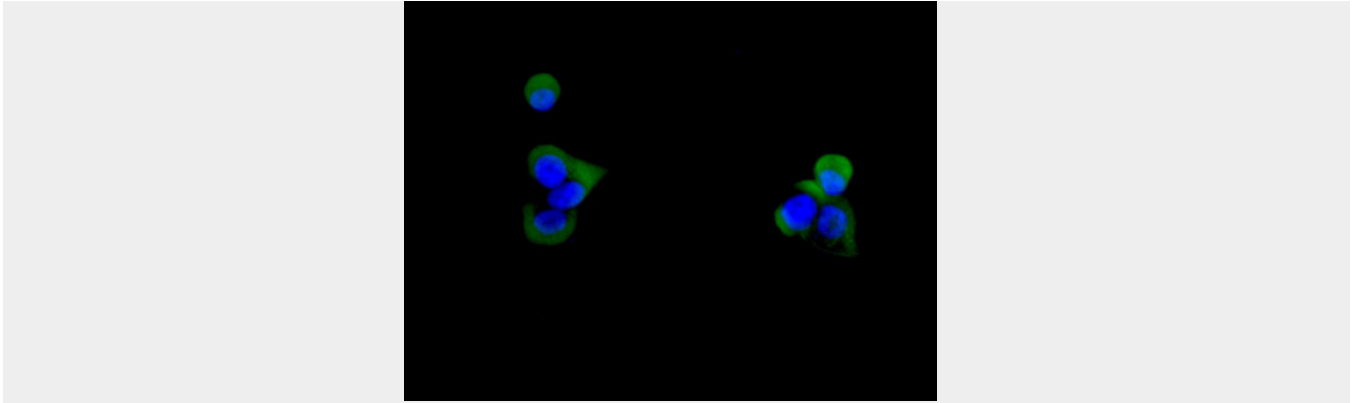
Provided below are standard protocols that you may find useful for product applications.

- [Western Blot](#)
- [Blocking Peptides](#)
- [Dot Blot](#)
- [Immunohistochemistry](#)
- [Immunofluorescence](#)
- [Immunoprecipitation](#)
- [Flow Cytometry](#)
- [Cell Culture](#)

Anti-CD59 Rabbit Monoclonal Antibody - Images



Western blot analysis of CD59 expression in HUVEC cell lysate.



Immunofluorescent analysis of BxPC-3 cells, using CD59 Antibody.