

Anti-CD32 FCGR2A Rabbit Monoclonal Antibody
Catalog # ABO13526

Specification

Anti-CD32 FCGR2A Rabbit Monoclonal Antibody - Product Information

| | |
|-------------------|------------------------|
| Application | WB, IHC |
| Primary Accession | P12318 |
| Host | Rabbit |
| Isotype | Rabbit IgG |
| Reactivity | Human |
| Clonality | Monoclonal |
| Format | Liquid |

Description

Anti-CD32 FCGR2A Rabbit Monoclonal Antibody . Tested in WB, IHC applications. This antibody reacts with Human.

Anti-CD32 FCGR2A Rabbit Monoclonal Antibody - Additional Information

Gene ID 2212

Other Names

Low affinity immunoglobulin gamma Fc region receptor II-a, IgG Fc receptor II-a, CDw32, Fc-gamma RII-a, Fc-gamma-RIIa, FcRII-a, CD32, FCGR2A, CD32, FCG2, FCGR2A1, IGFR2

Calculated MW

35001 MW KDa

Application Details

WB 1:500-1:2000
IHC 1:50-1:200

Subcellular Localization

Cell membrane ; Single-pass type I membrane protein.

Tissue Specificity

Found on monocytes, neutrophils and eosinophil platelets.

Contents

Rabbit IgG in phosphate buffered saline, pH 7.4, 150mM NaCl, 0.02% sodium azide and 50% glycerol, 0.4-0.5mg/ml BSA.

Immunogen

A synthesized peptide derived from human CD32

Purification

Affinity-chromatography

Storage

Store at -20°C for one year. For short term storage and frequent use, store at 4°C for up to one month. Avoid repeated

freeze-thaw cycles.

Anti-CD32 FCGR2A Rabbit Monoclonal Antibody - Protein Information

Name FCGR2A

Synonyms CD32, FCG2, FCGR2A1, IGFR2

Function

Binds to the Fc region of immunoglobulins gamma. Low affinity receptor. By binding to IgG it initiates cellular responses against pathogens and soluble antigens. Promotes phagocytosis of opsonized antigens.

Cellular Location

Cell membrane; Single-pass type I membrane protein

Tissue Location

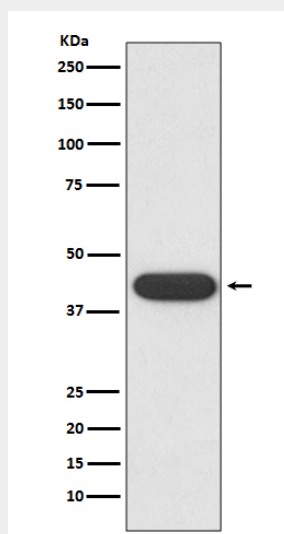
Found on monocytes, neutrophils and eosinophil platelets

Anti-CD32 FCGR2A Rabbit Monoclonal Antibody - Protocols

Provided below are standard protocols that you may find useful for product applications.

- [Western Blot](#)
- [Blocking Peptides](#)
- [Dot Blot](#)
- [Immunohistochemistry](#)
- [Immunofluorescence](#)
- [Immunoprecipitation](#)
- [Flow Cytometry](#)
- [Cell Culture](#)

Anti-CD32 FCGR2A Rabbit Monoclonal Antibody - Images



Western blot analysis of CD32 expression in K562 cell lysate.