

Anti-ApoB/Apolipoprotein B Rabbit Monoclonal Antibody
Catalog # ABO13521**Specification****Anti-ApoB/Apolipoprotein B Rabbit Monoclonal Antibody - Product Information**

Application	WB, IP, FC
Primary Accession	P04114
Host	Rabbit
Isotype	Rabbit IgG
Reactivity	Human
Clonality	Monoclonal
Format	Liquid

Description

Anti-ApoB/Apolipoprotein B Rabbit Monoclonal Antibody . Tested in WB, IP, Flow Cytometry applications. This antibody reacts with Human.

Anti-ApoB/Apolipoprotein B Rabbit Monoclonal Antibody - Additional Information

Gene ID 338

Other Names

Apolipoprotein B-100, Apo B-100, Apolipoprotein B-48, Apo B-48, APOB

Calculated MW

515605 MW KDa

Application Details

WB 1:500-1:2000
FC 1:100
IP 1:50

Subcellular Localization

Cytoplasm. Secreted.

Contents

Rabbit IgG in phosphate buffered saline, pH 7.4, 150mM NaCl, 0.02% sodium azide and 50% glycerol, 0.4-0.5mg/ml BSA.

Immunogen

A synthesized peptide derived from human ApoB

Purification

Affinity-chromatography

Storage

Store at -20°C for one year. For short term storage and frequent use, store at 4°C for up to one month. Avoid repeated freeze-thaw cycles.

Anti-ApoB/Apolipoprotein B Rabbit Monoclonal Antibody - Protein Information

Name APOB

Function

Apolipoprotein B is a major protein constituent of chylomicrons (apo B-48), LDL (apo B-100) and VLDL (apo B-100). Apo B- 100 functions as a recognition signal for the cellular binding and internalization of LDL particles by the apoB/E receptor.

Cellular Location

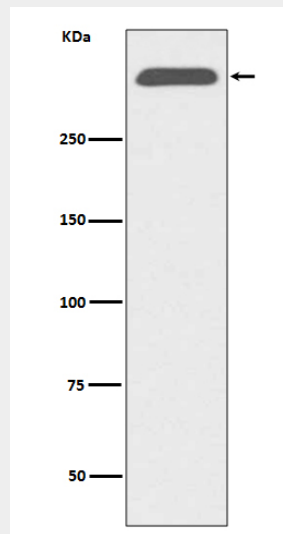
Cytoplasm. Secreted. Lipid droplet

Anti-ApoB/Apolipoprotein B Rabbit Monoclonal Antibody - Protocols

Provided below are standard protocols that you may find useful for product applications.

- [Western Blot](#)
- [Blocking Peptides](#)
- [Dot Blot](#)
- [Immunohistochemistry](#)
- [Immunofluorescence](#)
- [Immunoprecipitation](#)
- [Flow Cytometry](#)
- [Cell Culture](#)

Anti-ApoB/Apolipoprotein B Rabbit Monoclonal Antibody - Images



Western blot analysis of ApoB expression in human serum lysate.